



Mark Shore

Sales & Marketing
Specialist
Auctioneer

M 0418 799 222

E

Mark.shore@raywhite.com



Price List

Ray White Rockhampton Mark Shore P 07 4923 0000 F 07 4926 1538
www.raywhiterockhampton.com/vacantland

Ray White®

Lot No	Street	Size	Price	Status
		STAGE 2		
1	Eucalyptus Crescent	829m ²	N/A	SOLD
2	Eucalyptus Crescent	2006m ²	N/A	SOLD
3	Eucalyptus Crescent	2000m ²	N/A	SOLD
4	Amy Court	3.823ha	N/A	SOLD
5	Amy Court	952m ²	N/A	SOLD
6	Amy Court	1196m ²	TBA	
7	Amy Court	1299m ²	TBA	
8	Amy Court	1367m ²	TBA	
9	Amy Court	1533m ²	TBA	
10	Amy Court	1529m ²	N/A	SOLD
11	Amy Court	983m ²	N/A	SOLD
12	Amy Court	1063m ²	N/A	SOLD
13	Amy Court	2006m ²	N/A	SOLD
14	Amy Court	2875m ²	N/A	SOLD

These prices are subject to change without notification

**As interest has been extremely strong please phone
Mark Shore on (07) 4923 0000 or 0418 799 222
for up to date availability**

Land Title Act 1994; Land Act 1994
Form 21 Version 3

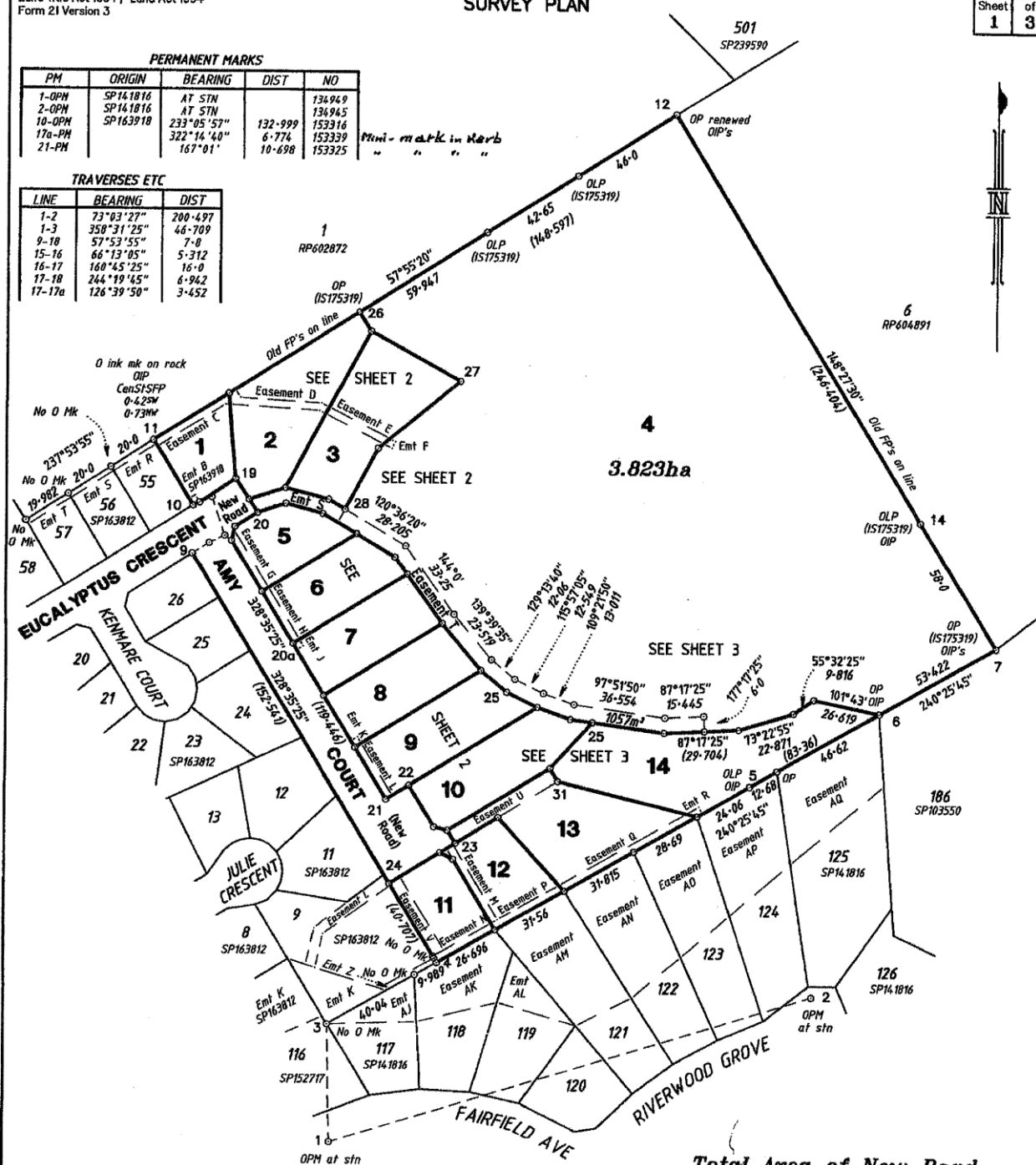
SURVEY PLAN

Sheet	of
1	3

PERMANENT MARKS				
PM	ORIGIN	BEARING	DIST	NO
1-OPM	SP141816	AT STN		134949
2-OPM	SP141816	AT STN		134945
10-OPM	SP163918	233°05'57"	132-999	153916
17a-PM		322°14'40"	6-774	153339
21-PM		167°01'	10-698	153325

Mini - markt in Herb
" " " "

LINE	BEARING	DIST
1-2	73°03'27"	200.497
1-3	358°31'25"	46.709
9-10	57°53'55"	7.0
15-16	66°13'05"	5.312
16-17	160°45'25"	16.0
17-18	244°19'45"	6.942
17-17a	126°39'50"	3.452



*Peg placed at all new corners
unless stated otherwise*

Total Area of New Road
(9-18-17-16-15-19-20-17a-21-22-23-24-9)
3012m²

I, Alphonse Henry KLERKX, hereby certify that the land comprised in this plan was surveyed by me personally and that the plan is accurate, that the said survey was performed in accordance with the Survey and Mapping Infrastructure Act 2003 and Surveyors Act 2003 and associated Regulations and Standards and that the said survey was completed on 8 October 2013

John M. Lister

Cadastral Surveyor

Date: 9 October 2013

Scale 1:1500 Lengths are in Metres

0 50 mm 100 mm 150 mm State copyright reserved.

Plan of Lots 1-14 and Easement C in Lot 1, Emt D in Lot 2, Emt E in Lot 3, Emnts F, S and T in Lot 4, Emt G in Lot 5, Emt H in Lot 6, Emt J in Lot 7, Emt K in Lot 8, Emt L in Lot 9, Emnts N & V in Lot 11, Emnts M & P in Lot 12, Emnts Q & U in Lot 13 and Emt R in Lot 14
Cancelling Lot 2 on SP163918

LOCAL GOVERNMENT: *Rockhampton Regional*

LOCALITY: *Norman Gardens*

MEMORANDUM OF 103910 3P 14 3218

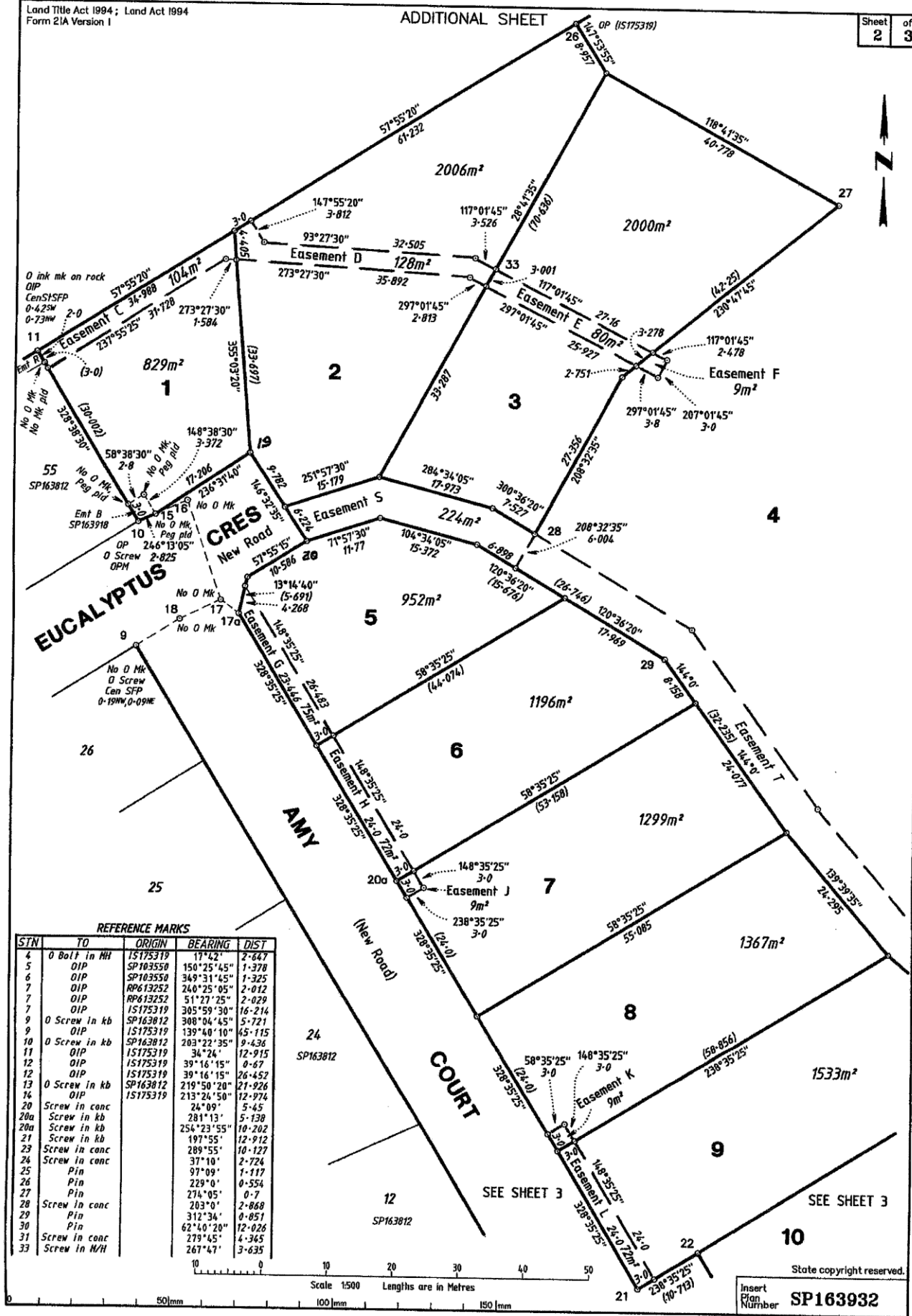
Survey Response	NO
--------------------	----

Scale: **1:1500**

Format: **STANDARD**



SP 163932



REFERENCE MARKS

STN	TO	ORIGIN	BEARING	DIST
4	0 Bolt in NH	IS175319	17°42'	2-647
5	0 OIP	SP103550	150°25'45"	1-378
6	0 OIP	SP103550	349°31'45"	1-325
7	0 OIP	RP613252	240°25'05"	2-012
7	0 OIP	RP613252	51°27'25"	2-029
9	0 Screw in kb	IS175319	305°59'30"	16-214
9	0 Screw in kb	SP163812	308°04'45"	5-721
10	0 OIP	IS175319	139°40'10"	45-115
11	0 OIP	SP163812	203°22'35"	9-436
12	0 OIP	IS175319	34°24'	12-915
12	0 OIP	IS175319	39°16'15"	0-67
12	0 OIP	IS175319	39°16'15"	26-452
13	0 Screw in kb	SP163812	219°50'20"	21-926
16	0 OIP	IS175319	213°24'50"	12-974
20	Screw in conc		24°09'	5-45
20a	Screw in kb		281°13'	5-138
20a	Screw in kb		254°23'55"	10-202
21	Screw in kb		197°55'	12-912
23	Screw in conc		289°55'	10-127
24	Screw in conc		37°10'	2-724
25	Pin		97°09'	1-117
26	Pin		229°0'	0-554
27	Pin		274°05'	0-7
28	Screw in conc		203°0'	2-868
29	Pin		312°34'	0-851
30	Pin		62°40'20"	12-026
31	Screw in conc		279°45'	4-365
33	Screw in N/H		267°47'	3-635

Scale 1:500 Lengths are in Metres

State copyright reserved.

Insert Plan Number SP163932

Scale 1 : 125

