



**David Bell**

Principal, Sales &  
Marketing Specialist

M 0409 285 062  
E david.bell@raywhite.com



**Laurie Taylor**

Sales & Marketing  
Specialist

M 0409 633 996  
E laurie.taylor@raywhite.com



**Price List**  
December 2017

Ray White Rockhampton David Bell & Laurie Taylor P 07 4923 0000 F 07 4926 1538  
[www.raywhiterockhampton.com/vacantland](http://www.raywhiterockhampton.com/vacantland)

**Ray White**

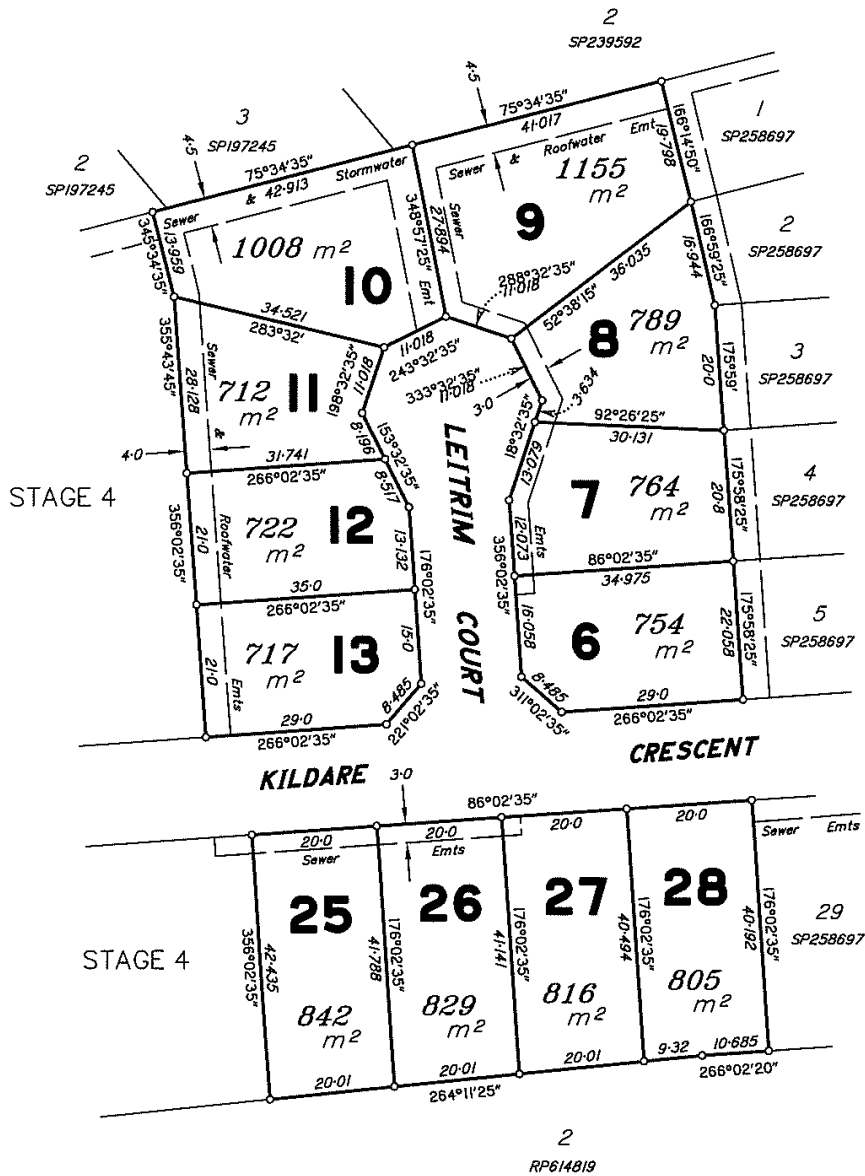
Stage	Lot No.	Address	Plan No.	Area	Price	Status
3	6	Leitrim Court	SP258697	754m <sup>2</sup>	N/A	<b>SOLD</b>
3	7	Leitrim Court	SP258697	764m <sup>2</sup>	N/A	<b>SOLD</b>
3	8	Leitrim Court	SP258697	789m <sup>2</sup>	N/A	<b>SOLD</b>
3	9	Leitrim Court	SP258697	1155m <sup>2</sup>	\$168,000	<b>SOLD</b>
3	10	Leitrim Court	SP258697	1008m <sup>2</sup>	N/A	<b>SOLD</b>
3	11	Leitrim Court	SP258697	712m <sup>2</sup>	N/A	<b>SOLD</b>
3	12	Leitrim Court	SP258697	722m <sup>2</sup>	N/A	<b>SOLD</b>
3	13	Leitrim Court	SP258697	717m <sup>2</sup>	N/A	<b>SOLD</b>
3	25	Lildare Crescent	SP258697	842m <sup>2</sup>	N/A	<b>SOLD</b>
3	26	Kildare Crescent	SP258697	829m <sup>2</sup>	\$170,000	Special Price
3	27	Kildare Crescent	SP258697	816m <sup>2</sup>	N/A	<b>SOLD</b>
3	28	Kildare Crescent	SP258697	805m <sup>2</sup>	N/A	<b>SOLD</b>
4	14	Bantry Street	SP266434	948m <sup>2</sup>	\$174,000	<b>SOLD</b>
4	15	Bantry Street	SP266434	910 m <sup>2</sup>	N/A	<b>SOLD</b>
4	16	Bantry Street	SP266434	1,240m <sup>2</sup>	\$178,000	Special Price
4	18	Bantry Street	SP266434	868m <sup>2</sup>	\$177,000	Special Price
4	19	Bantry Street	SP266434	785m <sup>2</sup>	\$169,000	Special Price
4	20	Bantry Street	SP266434	1,004m <sup>2</sup>	\$175,000	Special Price
4	23	Bantry Street	SP266434	736m <sup>2</sup>	\$169,000	<b>SOLD</b>
4	24	Bantry Street	SP266434	855m <sup>2</sup>	N/A	<b>SOLD</b>
6	64	Adelie Court	SP258697	730m <sup>2</sup>	\$156,000	Under Contract
6	65	Adelie Court	SP258697	768m <sup>2</sup>	\$164,000	Special Price

Stage	Lot No.	Address	Plan No.	Area	Price	Status
6	66	Adelie Court	SP258697	798m <sup>2</sup>	\$169,000	Special Price
6	67	Adelie Cout	SP258697	848m <sup>2</sup>	\$170,000	Special Price
6	68	Adelie Court	SP258697	1065m <sup>2</sup>	N/A	<b>SOLD</b>
6	69	Adelie Court	SP258697	740m <sup>2</sup>	\$169,000	Special Price
6	70	Adelie Court	SP258697	745m <sup>2</sup>	\$159,000	<b>SOLD</b>
6	71	Dunluce Street	SP258697	1077m <sup>2</sup>	\$173,000	Special Price
7	41	Kildare Crescent	SP258697	796m <sup>2</sup>	\$172,000	Special Price
7	42	Kildare Crescent	SP258697	810m <sup>2</sup>	\$172,000	Special Price
7	43	Kildare Crescent	SP258697	810m <sup>2</sup>	N/A	<b>SOLD</b>
7	44	Kildare Crescent	SP258697	810m <sup>2</sup>	\$172,000	Special Price
7	45	Kildare Crescent	SP258697	810m <sup>2</sup>	\$172,000	<b>SOLD</b>
7	46	Kildare Crescent	SP258697	819m <sup>2</sup>	\$172,000	Special Price
7	48	Kildare Crescent	SP258697	854m <sup>2</sup>	\$170,000	Special Price
7	49	Kildare Crescent	SP258697	797m <sup>2</sup>	\$170,000	Special Price
7	50	Kildare Crescent	SP258697	797m <sup>2</sup>	\$170,000	Special Price
7	51	Kildare Crescent	SP258697	798m <sup>2</sup>	\$170,000	Special Price
7	52	Kildare Crescent	SP258697	928m <sup>2</sup>	\$172,000	Special Price

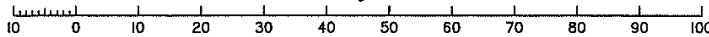
# DISCLOSURE PLAN (Cadastral)

This plan shows details of proposed Lots 6-13 & 25-28 on proposed plan 3774 Stage 3 which accompanied a subdivision application (approved by Rockhampton Regional Council on 1/8/11 - subject to conditions)  
For Engineering & Services Information see Sheet 1

Sheet  
2 of  
2



Scale 1: 750 - Lengths are in Metres.



**McKeaghes**  
Surveying Consultants

1A Denham Street, Rockhampton  
Queensland 4700  
Telephone: (07) 4922 6377  
Facsimile: (07) 4922 5206

This plan was prepared for Perpetual Property Group to accompany disclosure statements under the Land Sales Act 1984 and should not be used for any other purpose. The dimensions and areas of lots shown hereon are subject to field survey, construction standards, the requirements of Council and any other authority which may have statutory requirements under any relevant legislation.  
This note is an integral part of this plan.

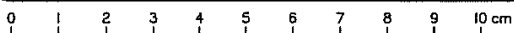
**DISCLOSURE PLAN OF PROPOSED**  
**Lots 6 - 13 & 25 - 28**  
Cancelling Part of Lot 500 on SP258697

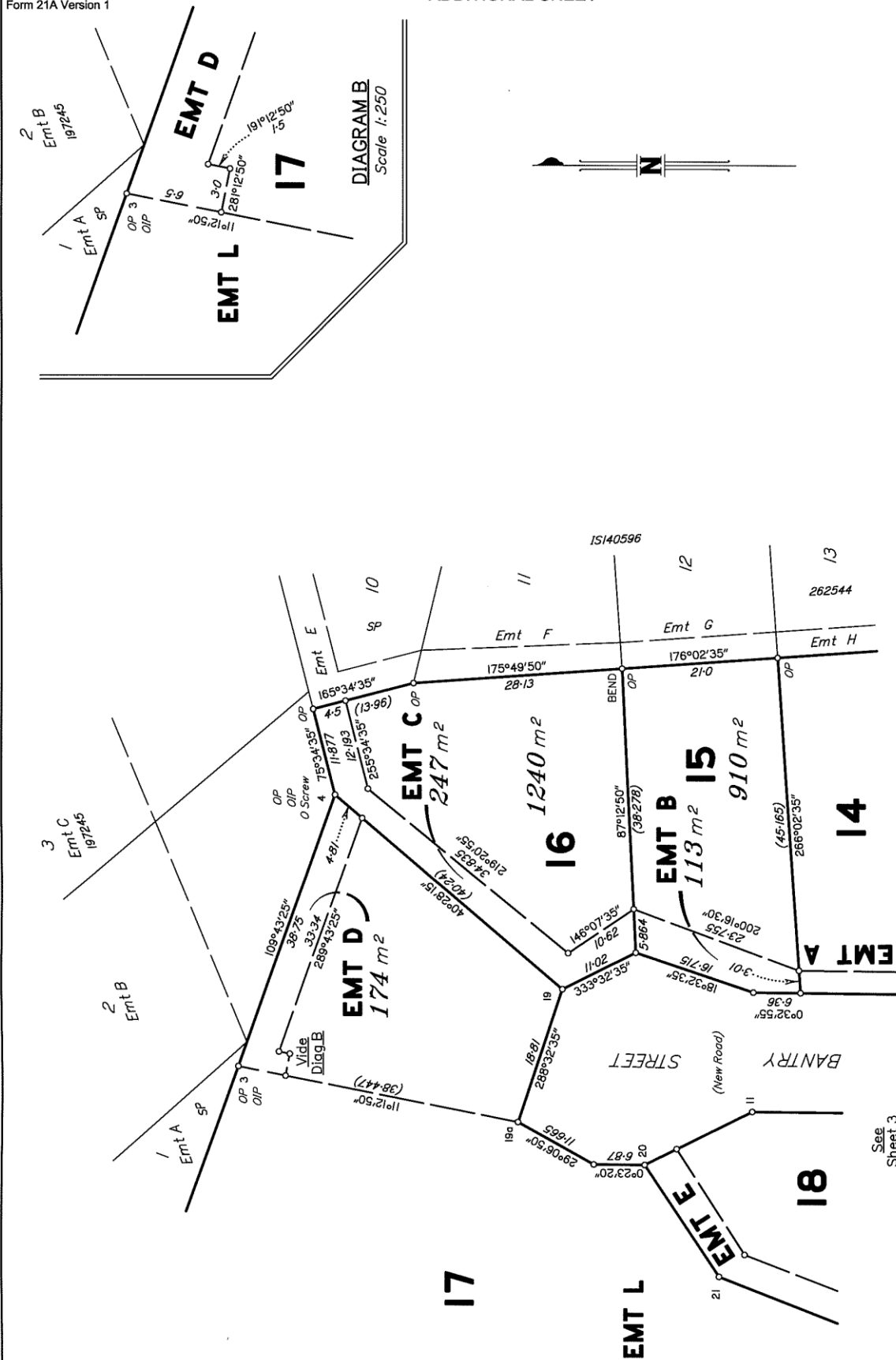
ORIGINAL Por 241

MERIDIAN	MAP REF	SCALE	DATE	DRAWN	FILENAME	AMENDMENT
SP258697	9051-34442	1:750 (A3)	30/7/2013	TH	3774 Disc Stages 3 6 7.dwg	3774 Disc-St 3 - 01

Paramount  
Crest  
Stage 3

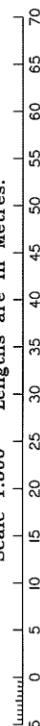
PARISH **MURCHISON**  
COUNTY **Livingstone**  
LOCALITY **PARKHURST**  
LOCAL AUTHORITY **ROCKHAMPTON R.C.**





**DIAGRAM A**

Scale 1:500 - Lengths are in Metres.



See Sheet 3

State copyright reserved.

Insert Plan Number SP266434

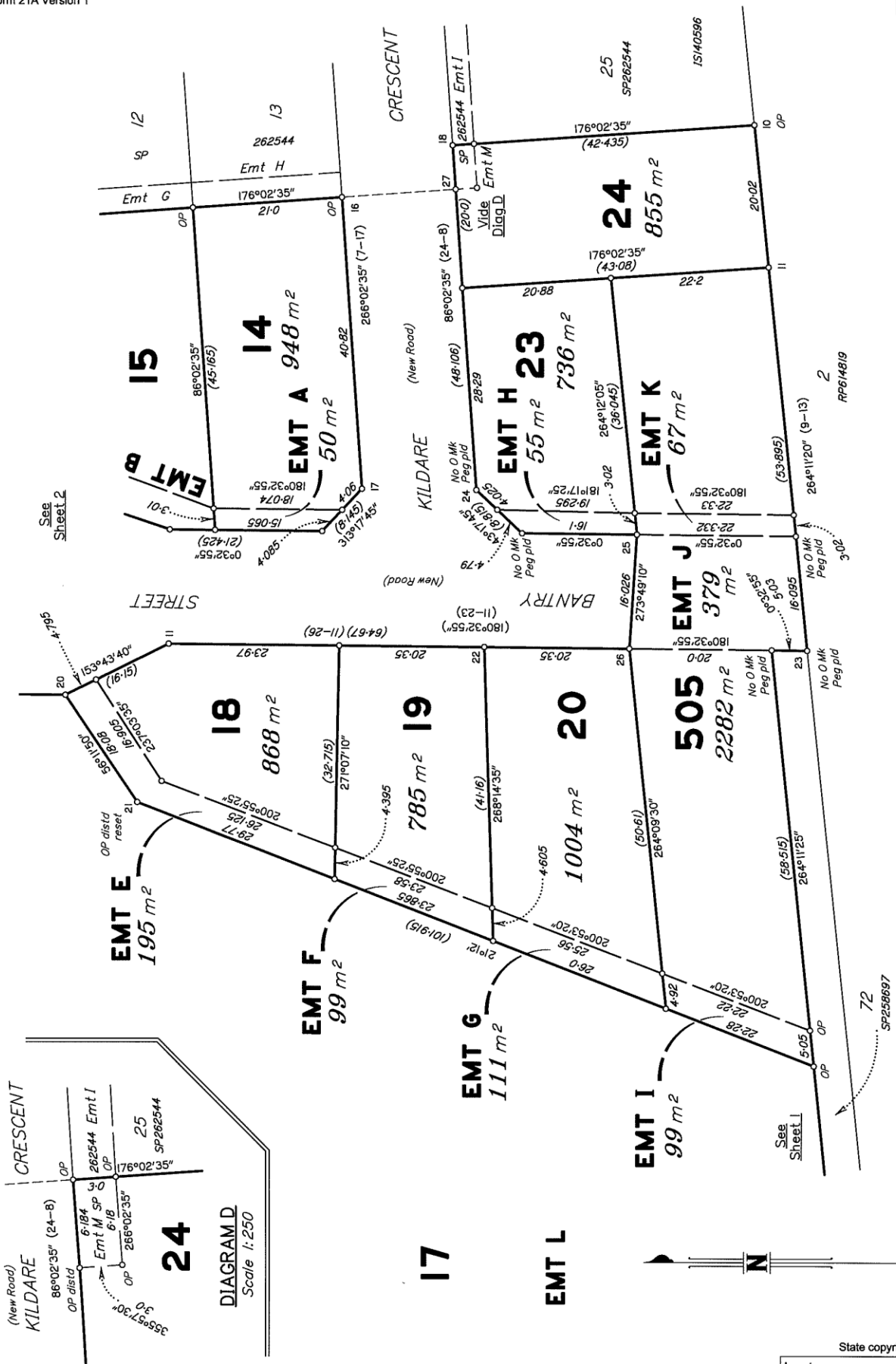
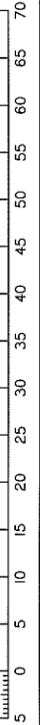


DIAGRAM C

Scale 1:500 - Lengths are in Metres.



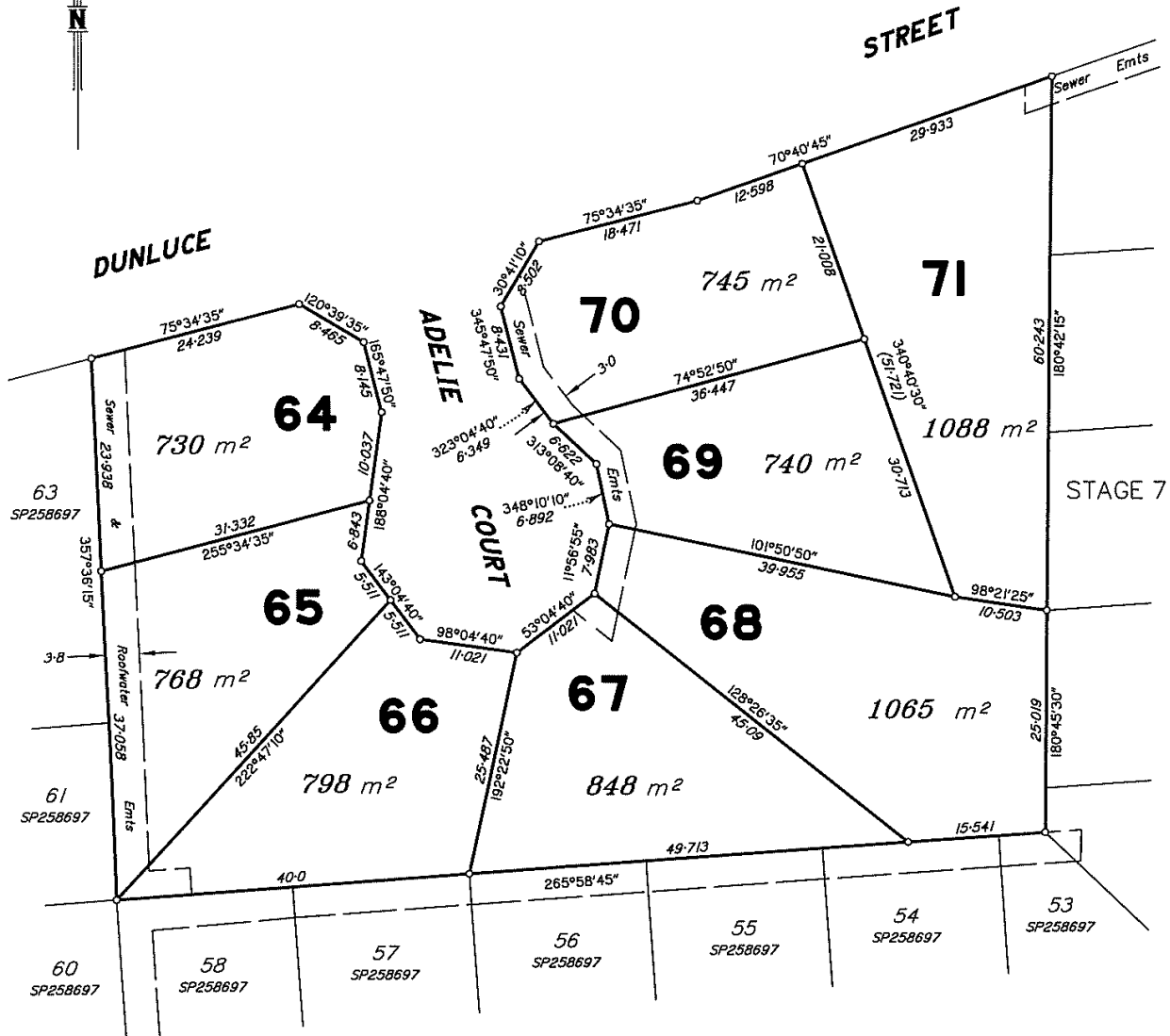
State copyright reserved.

Insert  
Plan  
Number  
SP266434

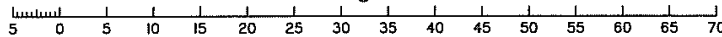
# DISCLOSURE PLAN (Cadastral)

This plan shows details of proposed Lots 64 - 71 on proposed plan 3774 Stage 6 which accompanied a subdivision application (approved by Rockhampton Regional Council on 1/8/11 - subject to conditions)  
For Engineering & Services Information see Sheet 1

Sheet 2 of 2



Scale 1:500 - Lengths are in Metres.



1A Denham Street, Rockhampton  
Queensland 4700  
Telephone: (07) 4922 6377  
Facsimile: (07) 4922 5206

This plan was prepared for Perpetual Property Group to accompany disclosure statements under the Land Sales Act 1984 and should not be used for any other purpose. The dimensions and areas of lots shown hereon are subject to field survey, construction standards, the requirements of Council and any other authority which may have statutory requirements under any relevant legislation.  
This note is an integral part of this plan.

## DISCLOSURE PLAN OF PROPOSED

**Lots 64 - 71**

*Cancelling Part of Lot 500 on SP258697*

ORIGINAL Por. 241

MERIDIAN MAP REF  
SP258697 9051-34442

SCALE  
1:750  
(A3)

DATE  
9/4/2013

DRAWN  
TH

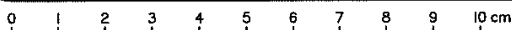
FILENAME  
3774 Disc Stages  
3 6 7.dwg

3774 Disc-St 6 - 01

AMENDMENT

Paramount  
Crest  
Stage 6

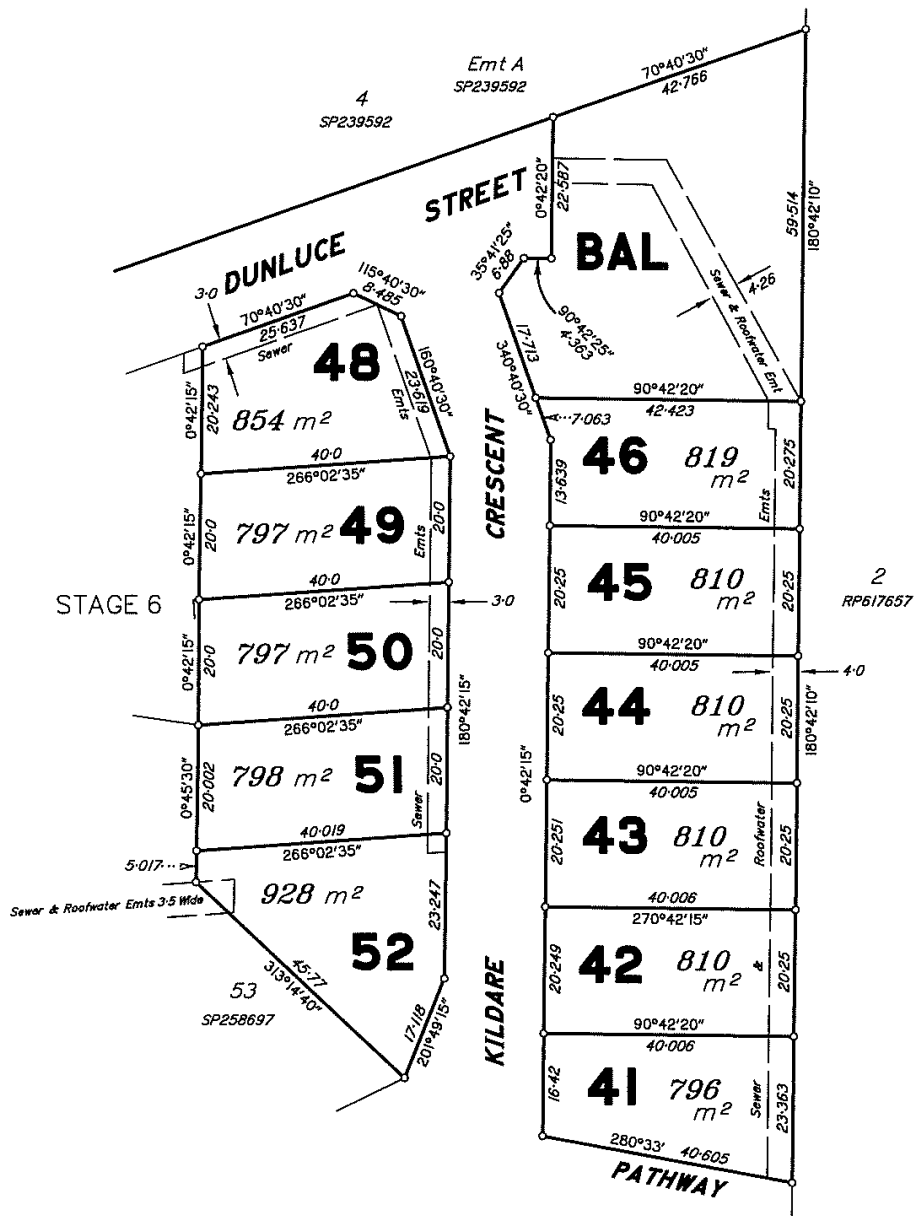
PARISH **MURCHISON**  
COUNTY **Livingstone**  
LOCALITY **PARKHURST**  
LOCAL AUTHORITY **ROCKHAMPTON R.C.**



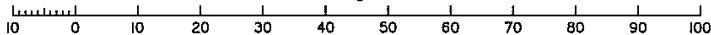
# DISCLOSURE PLAN (Cadastral)

This plan shows details of proposed Lots 41 – 46 & 48 – 52 on proposed plan 3774 Stage 7 which accompanied a subdivision application (approved by Rockhampton Regional Council on 1/8/11 – subject to conditions)  
For Engineering & Services Information see Sheet 1

Sheet  
2 of  
2



Scale 1:750 – Lengths are in Metres.



**McKeagles**  
Surveying Consultants

1A Denham Street, Rockhampton  
Queensland 4700  
Telephone: (07) 4922 6377  
Facsimile: (07) 4922 5206

This plan was prepared for Perpetual Property Group to accompany disclosure statements under the Land Sales Act 1984 and should not be used for any other purpose. The dimensions and areas of lots shown hereon are subject to field survey, construction standards, the requirements of Council and any other authority which may have statutory requirements under any relevant legislation.  
This note is an integral part of this plan.

## DISCLOSURE PLAN OF PROPOSED

**Lots 41 – 46 & 48 – 52**  
Cancelling Part of Lot 50 on SP258697

ORIGINAL Por 241

MERIDIAN	MAP REF	SCALE	DATE	DRAWN	FILENAME	AMENDMENT
SP258697	9051-34442	1:750 (A3)	30/7/2013	TH	1489 Disc Stages 3 6 7.dwg	3774 Discl-St 7 - 01

Paramount  
Crest  
Stages 7

PARISH **MURCHISON**  
COUNTY **Livingstone**  
LOCALITY **PARKHURST**  
LOCAL AUTHORITY **ROCKHAMPTON R.C.**

