



Riley Neaton

Sales & Marketing Specialist

M 0499 272 745

E riley.neaton@raywhite.com



Price List

Ray White Rockhampton Riley Neaton **M** 0499 272 745 **P** 07 4923 0000
F 07 4926 1538 www.raywhiterockhampton.com/vacantland

Ray White

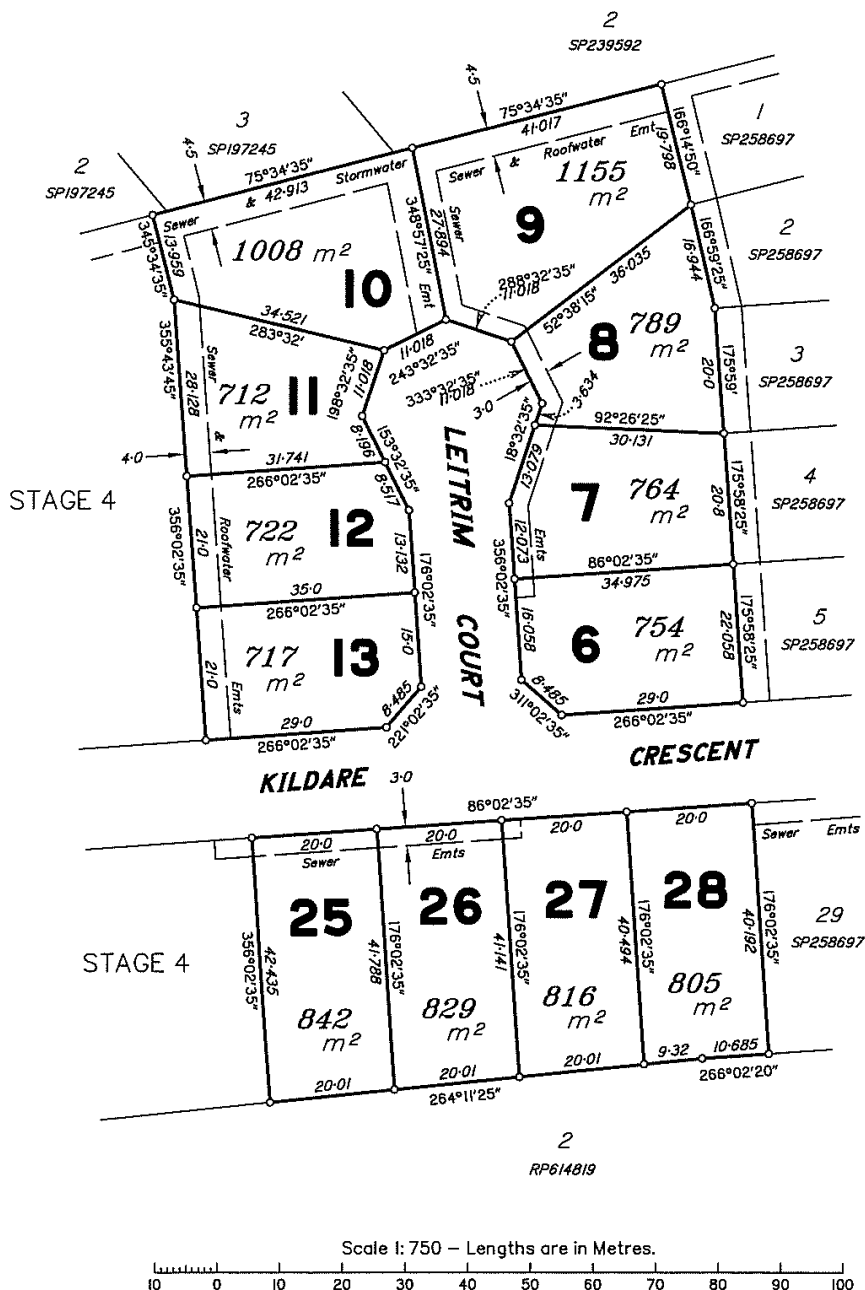
Stage	Lot No.	Address	Plan No.	Area	Price	Status
3	6	Leitrim Court	SP258697	754m ²	N/A	SOLD
3	7	Leitrim Court	SP258697	764m ²	N/A	SOLD
3	8	Leitrim Court	SP258697	789m ²	N/A	SOLD
3	9	Leitrim Court	SP258697	1155m ²	N/A	SOLD
3	10	Leitrim Court	SP258697	1008m ²	N/A	SOLD
3	11	Leitrim Court	SP258697	712m ²	N/A	SOLD
3	12	Leitrim Court	SP258697	722m ²	N/A	SOLD
3	13	Leitrim Court	SP258697	717m ²	N/A	SOLD
3	25	Kildare Crescent	SP258697	842m ²	N/A	SOLD
3	26	Kildare Crescent	SP258697	829m ²	\$162,500	Special Price
3	27	Kildare Crescent	SP258697	816m ²	N/A	SOLD
3	28	Kildare Crescent	SP258697	805m ²	N/A	SOLD
4	14	Bantry Street	SP266434	948m ²	N/A	SOLD
4	15	Bantry Street	SP266434	910 m ²	N/A	SOLD
4	16	Bantry Street	SP266434	1,240m ²	\$170,500	Special Price
4	18	Bantry Street	SP266434	868m ²	\$154,500	Special Price
4	19	Bantry Street	SP266434	785m ²	\$155,500	Special Price
4	20	Bantry Street	SP266434	1,004m ²	\$168,500	Special Price
4	23	Bantry Street	SP266434	736m ²	N/A	SOLD
4	24	Bantry Street	SP266434	855m ²	N/A	SOLD
6	64	Adelie Court	SP258697	730m ²	N/A	SOLD
6	65	Adelie Court	SP258697	768m ²	\$159,500	Special Price

Stage	Lot No.	Address	Plan No.	Area	Price	Status
6	66	Adelie Court	SP258697	798m ²	N/A	SOLD
6	67	Adelie Cout	SP258697	848m ²	\$163,500	Special Price
6	68	Adelie Court	SP258697	1065m ²	N/A	SOLD
6	69	Adelie Court	SP258697	740m ²	\$159,500	Special Price
6	70	Adelie Court	SP258697	745m ²	N/A	SOLD
6	71	Dunluce Street	SP258697	1077m ²	\$166,500	Special Price
7	41	Kildare Crescent	SP258697	796m ²	\$165,000	SOLD
7	42	Kildare Crescent	SP258697	810m ²	\$164,500	Special Price
7	43	Kildare Crescent	SP258697	810m ²	N/A	SOLD
7	44	Kildare Crescent	SP258697	810m ²	N/A	SOLD
7	45	Kildare Crescent	SP258697	810m ²	N/A	SOLD
7	46	Kildare Crescent	SP258697	819m ²	N/A	SOLD
7	48	Kildare Crescent	SP258697	854m ²	\$163,500	Special Price
7	49	Kildare Crescent	SP258697	797m ²	\$162,500	Special Price
7	50	Kildare Crescent	SP258697	797m ²	\$162,500	Special Price
7	51	Kildare Crescent	SP258697	798m ²	\$162,500	Special Price
7	52	Kildare Crescent	SP258697	928m ²	N/A	SOLD
8	47	Kildare Crescent	SP266431	2220 m ²	\$185,500	Special Price
9	21	Bantry Street	SP266434	1084 m ²	\$189,000	Special Price
9	22	Bantry Street	SP266434	819 m ²	\$167,000	Special Price
10	1	Longford Street	SP307458	960 m ²	\$189,000	Special Price
10	2	Longford Street	SP307458	610 m ²	\$165,000	Special Price
10	3	Longford Street	SP307458	610 m ²	\$165,000	Special Price
10	4	Longford Street	SP307458	610 m ²	\$165,000	Special Price
10	5	Longford Street	SP307458	610 m ²	\$165,000	Special Price
10	6	Longford Street	SP307458	746 m ²	\$175,000	Special Price
10	7	Longford Street	SP307458	839 m ²	\$179,000	Special Price
10	8	Longford Street	SP307458	769 m ²	\$179,000	Special Price
10	9	Longford Street	SP307458	973 m ²	\$189,000	Special Price
10	10	Longford Street	SP307458	1085 m ²	\$189,000	Special Price

DISCLOSURE PLAN (Cadastral)

This plan shows details of proposed Lots 6-13 & 25-28 on proposed plan 3774 Stage 3 which accompanied a subdivision application (approved by Rockhampton Regional Council on 1/8/11 - subject to conditions)
For Engineering & Services Information see Sheet 1

Sheet
2 of
2



McKeaghes
Surveying Consultants

1A Denham Street, Rockhampton
Queensland 4700
Telephone: (07) 4922 6377
Facsimile: (07) 4922 5206

This plan was prepared for Perpetual Property Group to accompany disclosure statements under the Land Sales Act 1984 and should not be used for any other purpose. The dimensions and areas of lots shown hereon are subject to field survey, construction standards, the requirements of Council and any other authority which may have statutory requirements under any relevant legislation.
This note is an integral part of this plan.

Paramount
Crest
Stage 3

DISCLOSURE PLAN OF PROPOSED
Lots 6 - 13 & 25 - 28
Cancelling Part of Lot 500 on SP258697

PARISH MURCHISON
COUNTY Livingstone
LOCALITY PARKHURST
LOCAL AUTHORITY ROCKHAMPTON R.C.

ORIGINAL Por. 241

MERIDIAN	MAP REF	SCALE	DATE	DRAWN	FILENAME	AMENDMENT
SP258697	9051-34442	1:750 (A3)	30/7/2013	TH	3774 Disc Stages 3 6 7.dwg	3774 Disc-St 3 - 01 A

0 1 2 3 4 5 6 7 8 9 10 cm

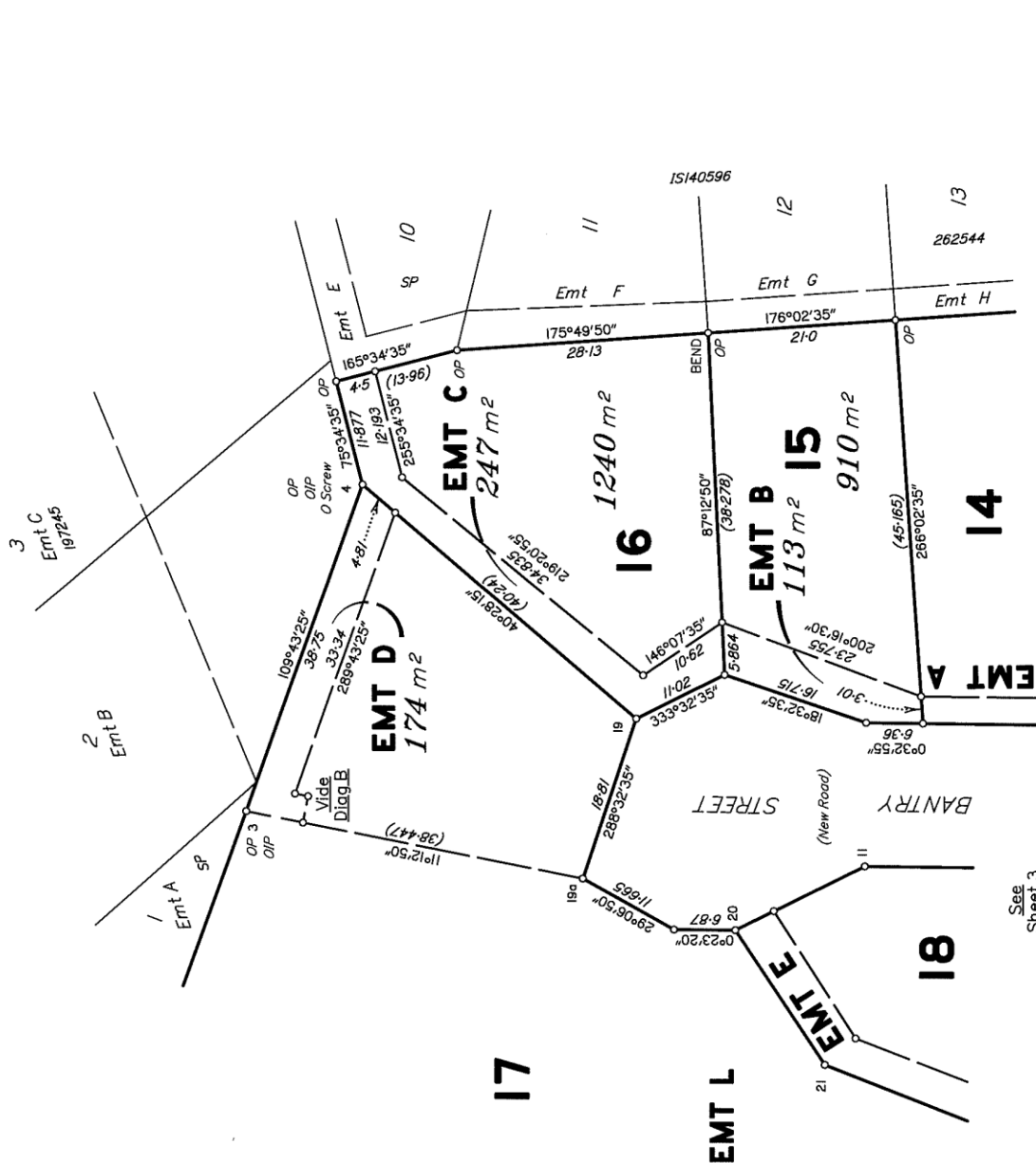
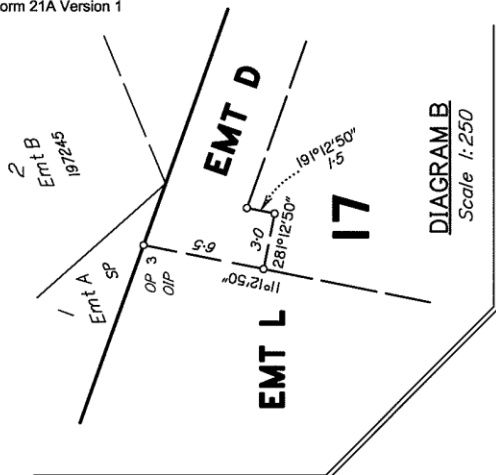
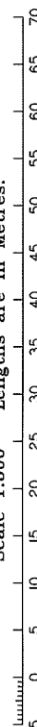


DIAGRAM A
Scale 1:500 - Lengths are in Metres.



See
Sheet 3

State copyright reserved.

Insert Plan Number
SP266434

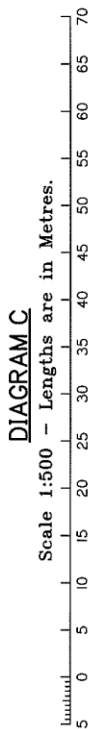


DIAGRAM C

Scale 1:500 - Lengths are in Metres.

72 SP258697

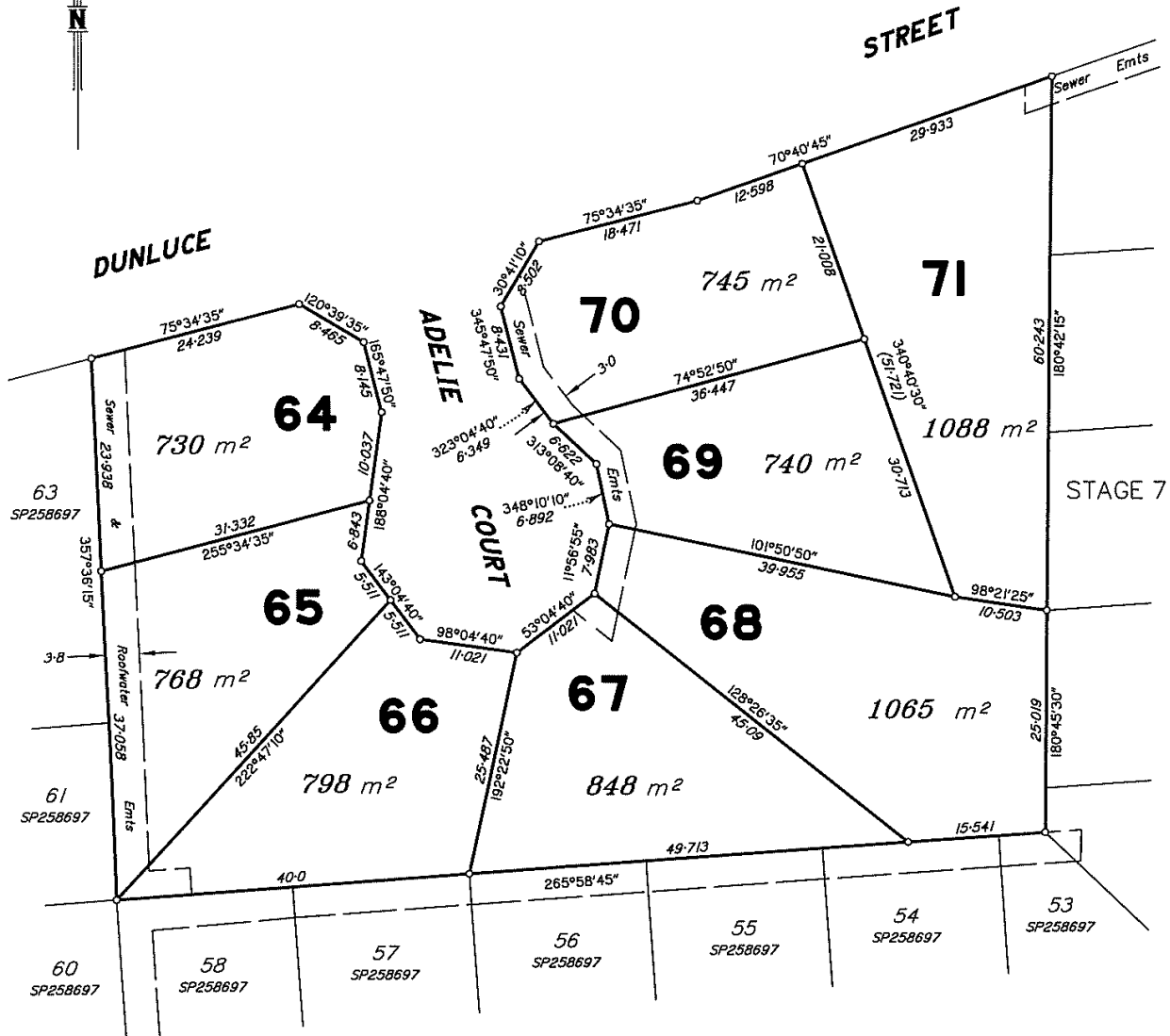
State copyright reserved.

Insert
Plan
Number **SP266434**

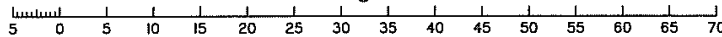
DISCLOSURE PLAN (Cadastral)

This plan shows details of proposed Lots 64 - 71 on proposed plan 3774 Stage 6 which accompanied a subdivision application (approved by Rockhampton Regional Council on 1/8/11 - subject to conditions)
For Engineering & Services Information see Sheet 1

Sheet 2 of 2



Scale 1:500 - Lengths are in Metres.



1A Denham Street, Rockhampton
Queensland 4700
Telephone: (07) 4922 6377
Facsimile: (07) 4922 5206

This plan was prepared for Perpetual Property Group to accompany disclosure statements under the Land Sales Act 1984 and should not be used for any other purpose. The dimensions and areas of lots shown hereon are subject to field survey, construction standards, the requirements of Council and any other authority which may have statutory requirements under any relevant legislation.
This note is an integral part of this plan.

DISCLOSURE PLAN OF PROPOSED

Lots 64 - 71

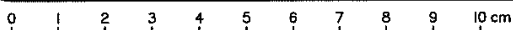
Cancelling Part of Lot 500 on SP258697

ORIGINAL Por. 241

MERIDIAN	MAP REF	SCALE	DATE	DRAWN	FILENAME	AMENDMENT
SP258697	9051-34442	1:750 (A3)	9/4/2013	TH	3774 Disc Stages 3 6 7.dwg	3774 Disc-St 6 - 01

Paramount
Crest
Stage 6

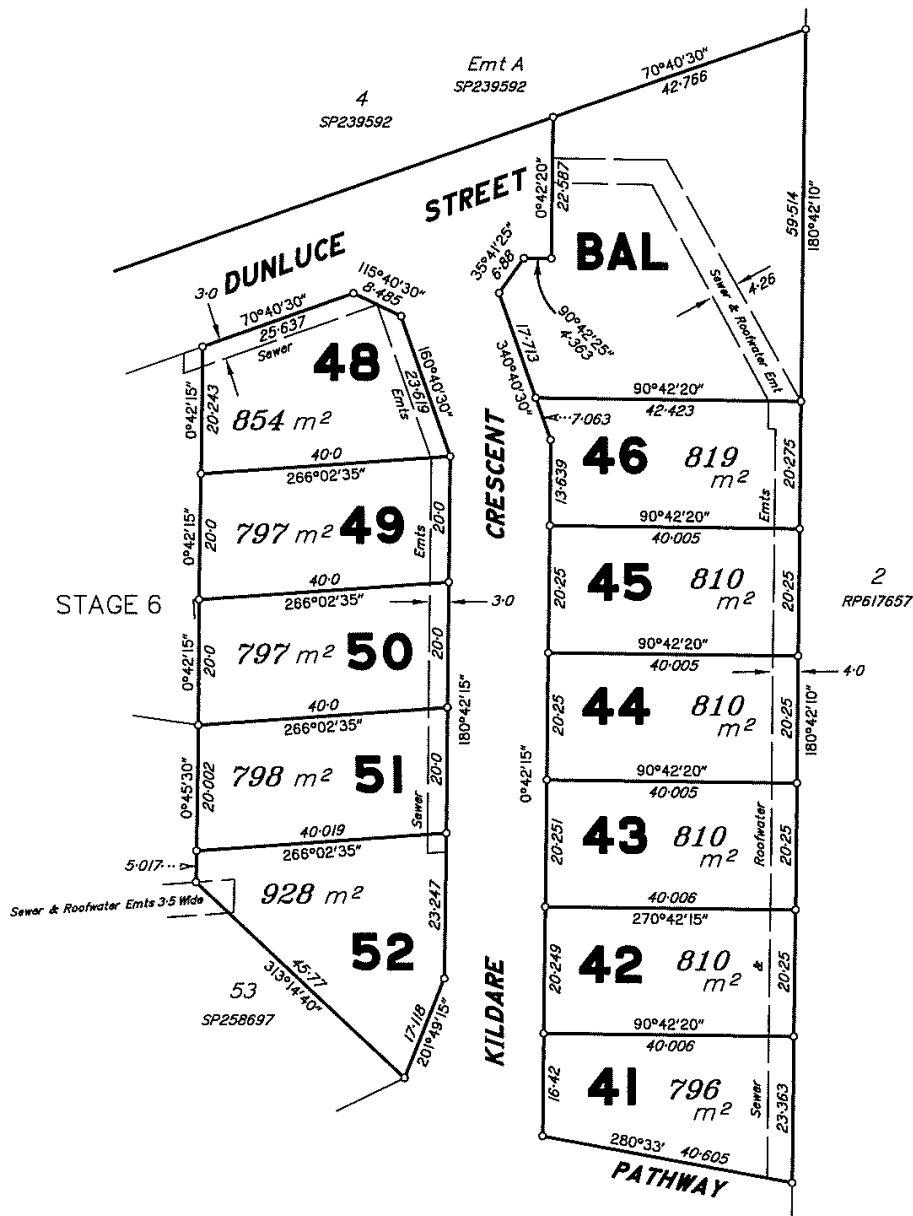
PARISH **MURCHISON**
COUNTY **Livingstone**
LOCALITY **PARKHURST**
LOCAL AUTHORITY **ROCKHAMPTON R.C.**



DISCLOSURE PLAN (Cadastral)

Sheet 2 of 2

This plan shows details of proposed Lots 41 – 46 & 48 – 52 on proposed plan 3774 Stage 7 which accompanied a subdivision application (approved by Rockhampton Regional Council on 1/8/11 – subject to conditions)
For Engineering & Services Information see Sheet 1



Scale 1:750 – Lengths are in Metres.

McKeagles
Surveying Consultants

1A Denham Street, Rockhampton
Queensland 4700
Telephone: (07) 4922 6377
Facsimile: (07) 4922 5206

This plan was prepared for Perpetual Property Group to accompany disclosure statements under the Land Sales Act 1984 and should not be used for any other purpose. The dimensions and areas of lots shown hereon are subject to field survey, construction standards, the requirements of Council and any other authority which may have statutory requirements under any relevant legislation.
This note is an integral part of this plan.

Paramount
Crest
Stages 7

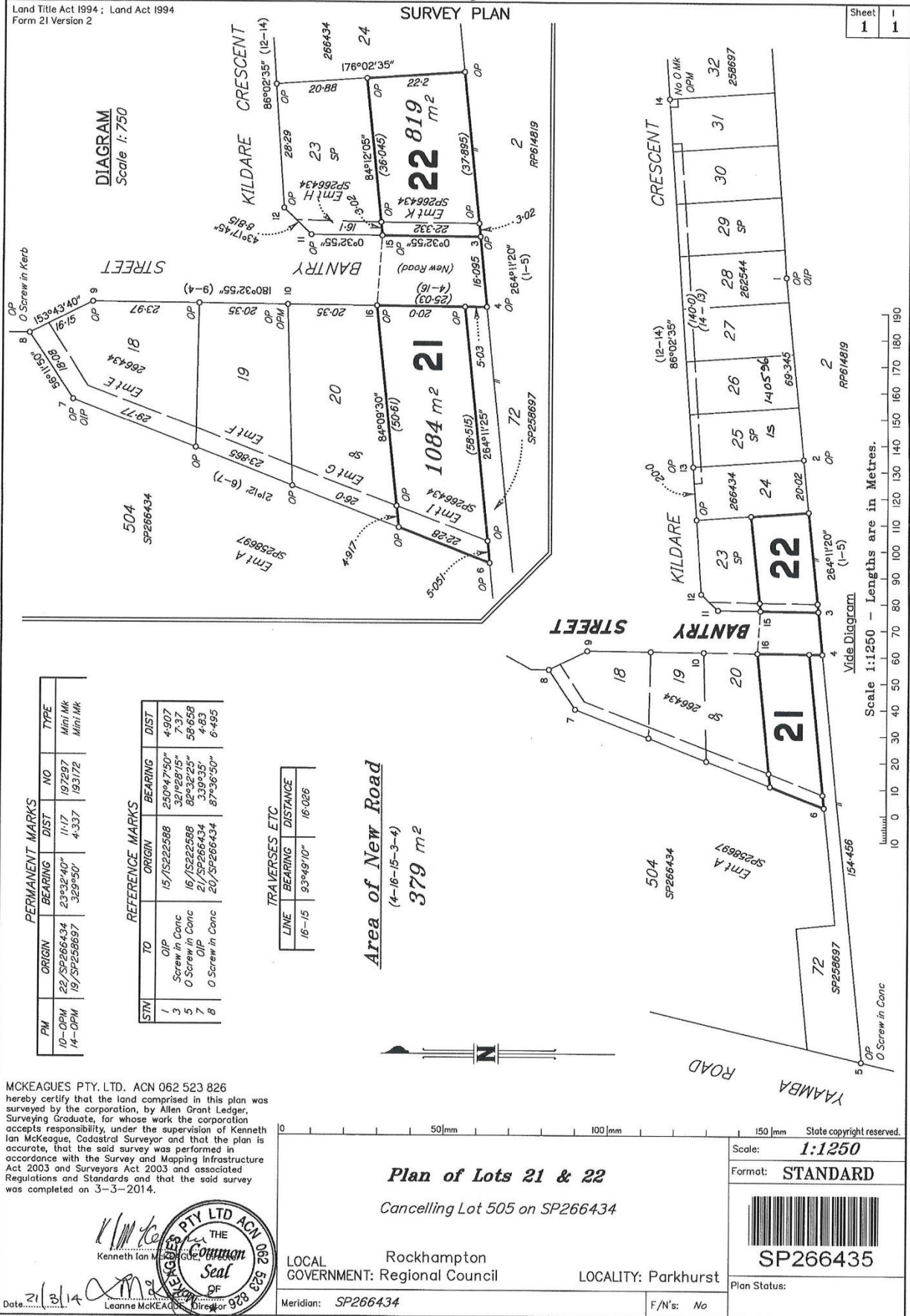
DISCLOSURE PLAN OF PROPOSED
Lots 41 – 46 & 48 – 52
Cancelling Part of Lot 50 on SP258697

PARISH **MURCHISON**
COUNTY **Livingstone**
LOCALITY **PARKHURST**
LOCAL AUTHORITY **ROCKHAMPTON R.C.**

ORIGINAL Por 241

MERIDIAN	MAP REF	SCALE	DATE	DRAWN	FILENAME	AMENDMENT
SP258697	9051-34442	1:750 (A3)	30/7/2013	TH	1489 Disc Stages 3 6 7.dwg	3774 Discl-St 7 - 01

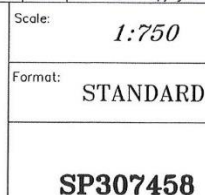
0 1 2 3 4 5 6 7 8 9 10 cm

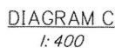


MCKEAGUES PTY. LTD. ACN 062 523 826
hereby certify that the land comprised in this plan was surveyed by the corporation, by Allen Grant Ledger, Surveying Graduate, for whose work the corporation accepts responsibility, under the supervision of Kenneth Ian McKeague, Cadastral Surveyor and that the plan is accurate, that the said survey was performed in accordance with the Survey and Mapping Infrastructure Act 2003 and Surveyors Act 2003 and associated Regulations and Standards and that the said survey was completed on 3-3-2014.



Date: 21/3/14
Leanne McKeague, Director

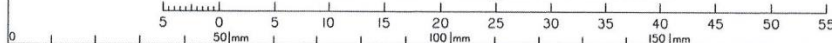




PERMANENT MARKS				
PM	BEARING	DIST	NO	ORIGIN
11-OPM (New Conn)	167°29'	50.4	197297	22/SP266434

MGA COORDINATES GDA-94							
Station	East	North	Zone	PU	Lineage	Method	Remarks
PM45227	245 259-008	7 423 095-975	56	0 015	Datum		
PM192769	245 152-847	7 423 646-850	56	0 011	Datum		
Near Stn 1	245 264-690	7 422 792-805	56	0 027	Derived	RTK	O Screw in con.
Near Stn 5	245 346-305	7 422 994-360	56	0 027	Derived	RTK	U Nail in con.

State copyright reserved.



Insert
Plan
Number **SP307458**

