



**Mark Shore**

Sales & Marketing  
Specialist  
Auctioneer

M 0418 799 222  
E Mark.shore@raywhite.com



FOREST PARK

Price List  
May 2018

Ray White Rockhampton Mark Shore P 07 4923 0000 F 07 4926 1538  
www.raywhiterockhampton.com/vacantland

**Ray White**

Lot No.	Street	Size	Price	Status
		<b>Stage 8</b>		
203	Belbowrie Avenue	834m <sup>2</sup>	\$168,900	
		<b>Stage 19</b>		
1	Bushpea Court	960m <sup>2</sup>	\$185,900	
2	Bushpea Court	711m <sup>2</sup>	\$166,900	<b>SOLD</b>
3	Bushpea Court	702m <sup>2</sup>	\$166,900	<b>SOLD</b>
4	Bushpea Court	703m <sup>2</sup>	\$166,900	<b>SOLD</b>
5	Bushpea Court	774m <sup>2</sup>	\$168,900	<b>SOLD</b>
6	Bushpea Court	1099m <sup>2</sup>	\$189,900	<b>SOLD</b>
7	Bushpea Court	715m <sup>2</sup>	\$169,900	
8	Bushpea Court	715m <sup>2</sup>	\$169,900	
9	Bushpea Court	796m <sup>2</sup>	\$176,900	<b>SOLD</b>
10	Foxglove Avenue	1061m <sup>2</sup>	\$187,900	
11	Foxglove Avenue	771m <sup>2</sup>	\$173,900	
12	Foxglove Avenue	733m <sup>2</sup>	\$169,900	
13	Foxglove Avenue	701m <sup>2</sup>	\$167,900	<b>SOLD</b>
14	Foxglove Avenue	733m <sup>2</sup>	\$169,900	
15	Foxglove Avenue	701m <sup>2</sup>	\$167,900	
16	Foxglove Avenue	733m <sup>2</sup>	\$169,900	<b>SOLD</b>
17	Foxglove Avenue	701m <sup>2</sup>	\$167,900	
18	Foxglove Avenue	733m <sup>2</sup>	\$169,900	
19	Foxglove Avenue	701m <sup>2</sup>	\$167,900	
20	Foxglove Avenue	733m <sup>2</sup>	\$169,900	
21	Foxglove Avenue	701m <sup>2</sup>	\$167,900	<b>SOLD</b>
22	Foxglove Avenue	732m <sup>2</sup>	\$169,900	<b>SOLD</b>
23	Foxglove Avenue	702m <sup>2</sup>	\$167,900	<b>SOLD</b>

24	Foxglove Avenue	882m <sup>2</sup>	\$173,900	<b>SOLD</b>
25	Foxglove Avenue	971m <sup>2</sup>	\$179,900	<b>SOLD</b>
26	Foxglove Avenue	1031m <sup>2</sup>	\$189,900	<b>SOLD</b>
27	Foxglove Avenue	762m <sup>2</sup>	\$169,900	<b>SOLD</b>
28	Plumb Drive	744m <sup>2</sup>	\$171,900	<b>SOLD</b>
29	Plumb Drive	807m <sup>2</sup>	\$169,900	<b>SOLD</b>
30	Plumb Drive	782m <sup>2</sup>	\$171,900	<b>SOLD</b>
31	Plumb Drive	720m <sup>2</sup>	\$168,900	<b>SOLD</b>
32	Foxglove Avenue	748m <sup>2</sup>	\$168,900	<b>SOLD</b>
33	Plumb Drive	952m <sup>2</sup>	\$188,900	<b>SOLD</b>
34	Snow Gum Street	805m <sup>2</sup>	\$173,900	<b>SOLD</b>
35	Snow Gum Street	722m <sup>2</sup>	\$169,900	<b>SOLD</b>
36	Snow Gum Street	716m <sup>2</sup>	\$168,900	<b>SOLD</b>
37	Snow Gum Street	710m <sup>2</sup>	\$168,900	<b>SOLD</b>
38	Snow Gum Street	705m <sup>2</sup>	\$168,900	<b>SOLD</b>
39	Snow Gum Street	755m <sup>2</sup>	\$171,900	<b>SOLD</b>
40	Bushpea Court	861m <sup>2</sup>	\$178,900	<b>SOLD</b>
41	Foxglove Avenue	805m <sup>2</sup>	\$176,900	<b>SOLD</b>
42	Foxglove Avenue	805m <sup>2</sup>	\$176,900	<b>SOLD</b>
43	Foxglove Avenue	805m <sup>2</sup>	\$176,900	<b>SOLD</b>
44	Foxglove Avenue	805m <sup>2</sup>	\$176,900	<b>SOLD</b>
45	Foxglove Avenue	805m <sup>2</sup>	\$176,900	<b>SOLD</b>
46	Foxglove Avenue	805m <sup>2</sup>	\$176,900	<b>SOLD</b>

These prices are subject to change without notification  
CONTACT MARK SHORE ON 0418 799 222



*Ray White Rockhampton*  
Cnr Yaamba Rd & Macartney St  
North Rockhampton Qld 4701  
Telephone: (07) 4923 0000  
Facsimile: (07) 4926 1538

# STAGE 19

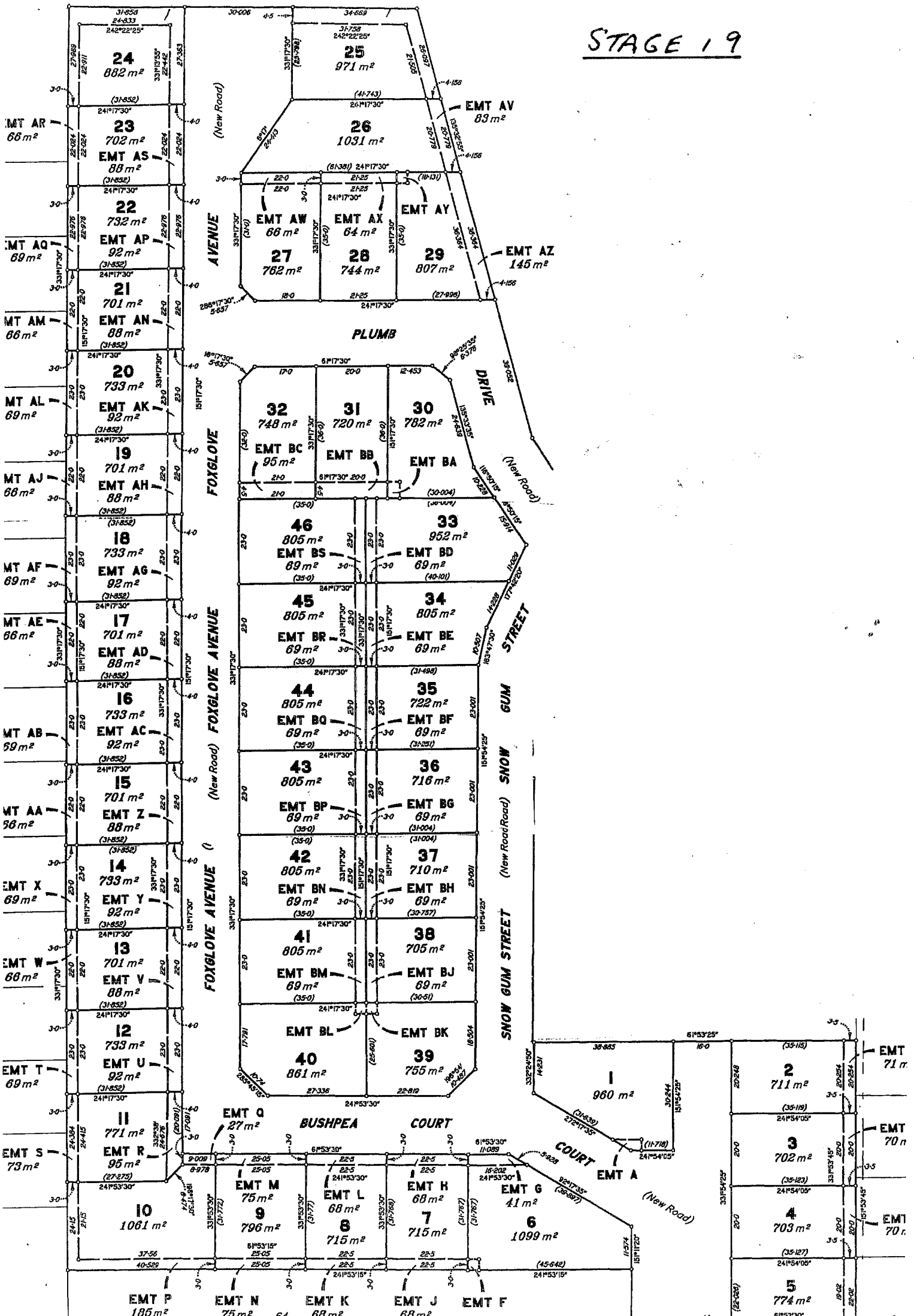
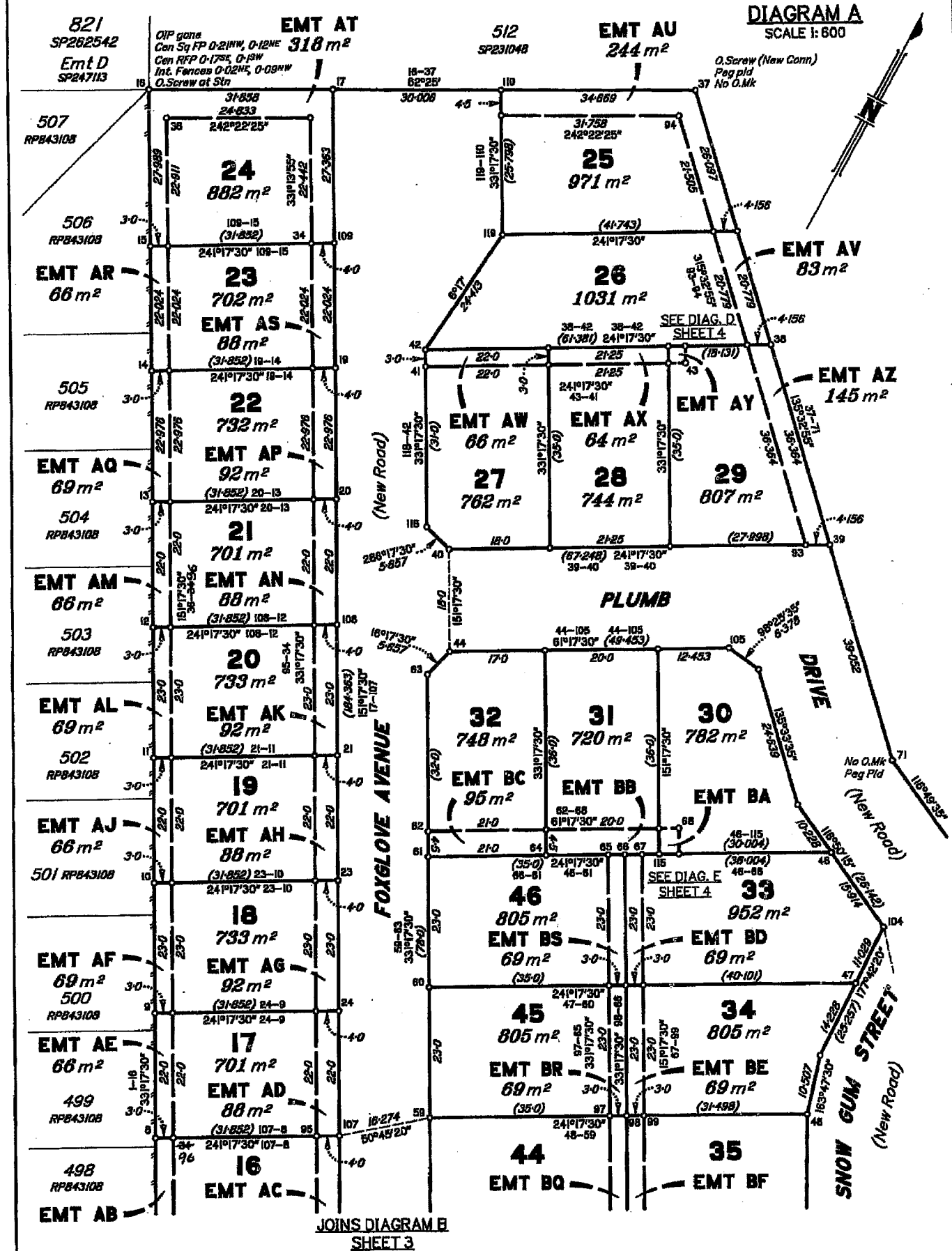
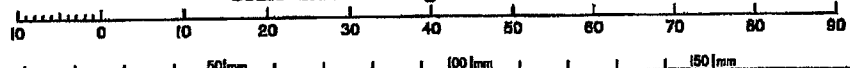


DIAGRAM A  
SCALE 1:600



JOINS DIAGRAM E  
SHEET 3

Scale 1:600 - Lengths are in Metres.

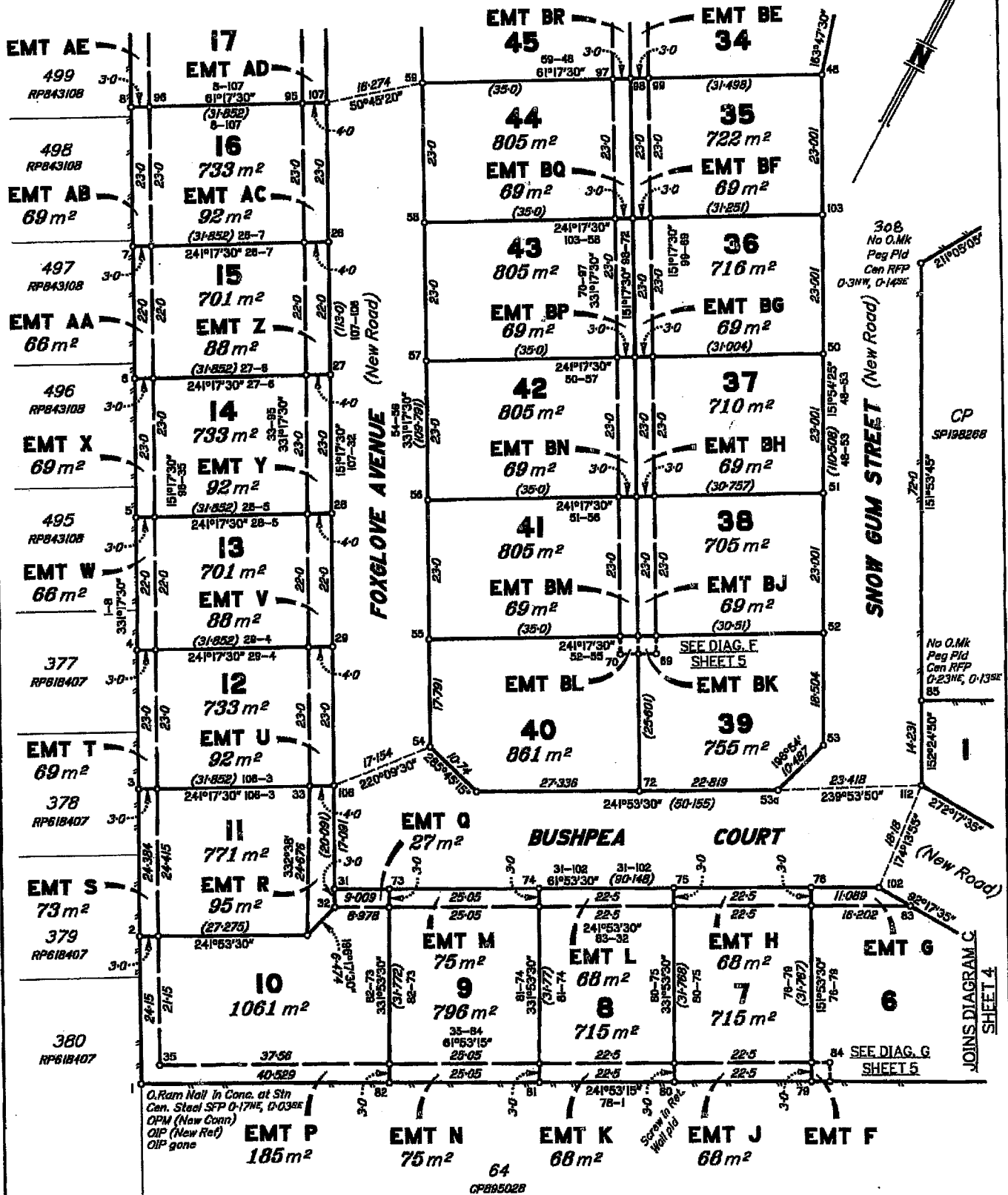


State copyright reserved.

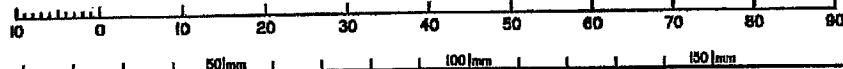
Insert Plan Number SP275041

**DIAGRAM B**  
SCALE 1:600

JOINS DIAGRAM A  
SHEET 2



Scale 1:600 - Lengths are in Metres.



State copyright reserved.

Insert Plan Number **SP275041**

DIAGRAM C  
SCALE 1: 600

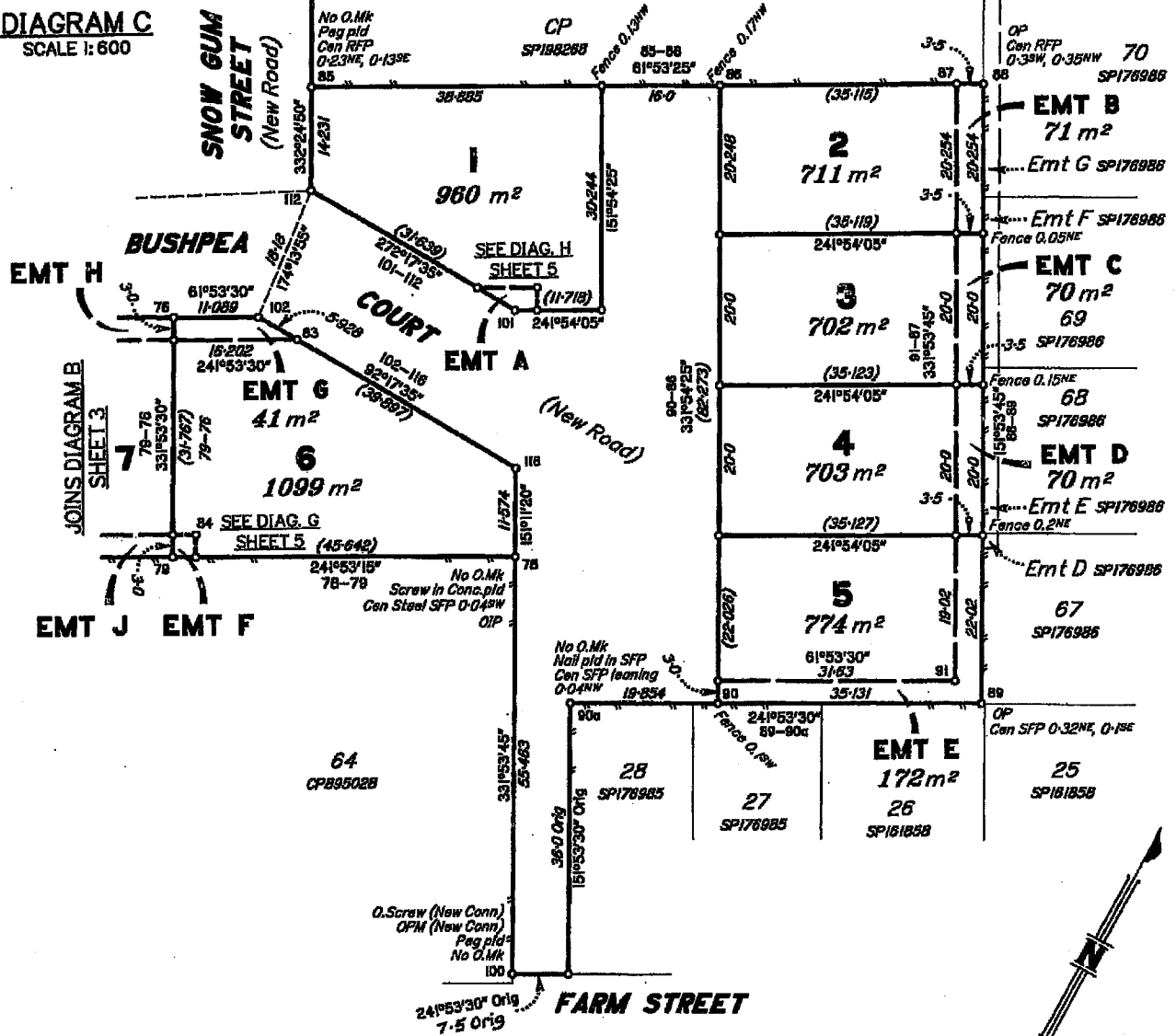


DIAGRAM D  
SCALE 1: 150

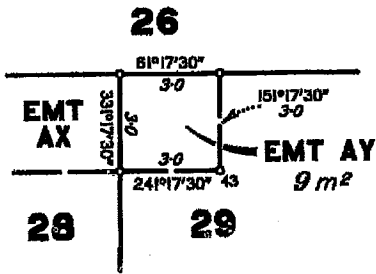
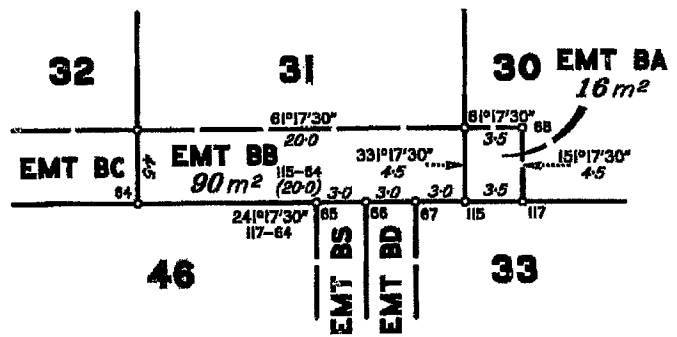
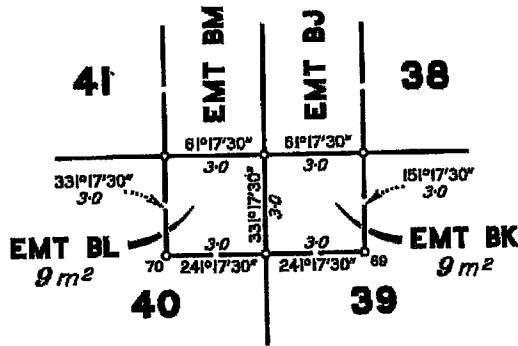


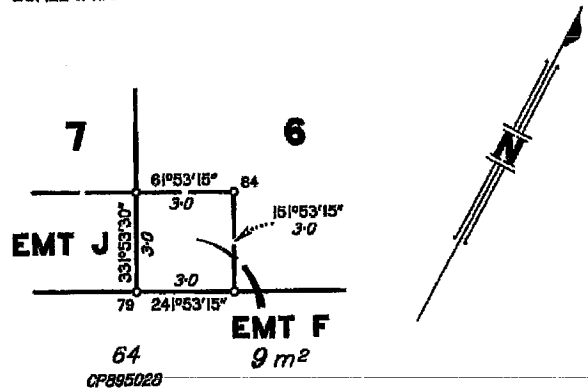
DIAGRAM E  
SCALE 1: 300



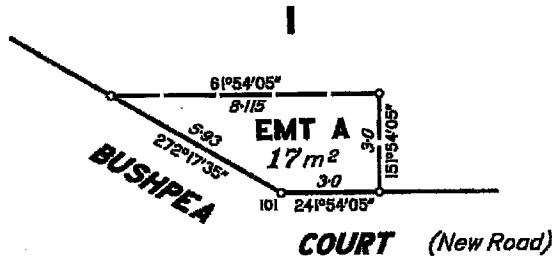
**DIAGRAM F**  
SCALE 1:150



**DIAGRAM G**  
SCALE 1:150



**DIAGRAM H**  
SCALE 1:150



**Reinstatement Report:**

Plans Used: CP895028, RP843108, SP176985, SP176986, SP185983 & IS140580

- The eastern boundary of this estate reinstated from original reference marks and boundary marks at stations 113, 150, 151, 88 and 89 and distances from previous surveys adopted.
- Station 90a determined by maintaining a straight line 150-90a and dead distance from station 90.
- Station 100 reinstated by determining a new connection to the O.Screw placed nearby - station 5 on CP895028 and OIP at station 78 to confirm reinstatement.
- Southern boundary (ie Line 78-1) was fixed by original reference marks off stations 78 and 1, with dead distance confirmed between the two.
- Western boundary (ie Line 1-16) was reinstated by original boundary corner marks at stations 1 and 16 and OPM90372 from station 1 (New Conn). The OIP at station 1 was thence given a new reference. Distance between stations 1 & 16 agreed with previous surveys.
- The NE corner of the estate (ie Station 37) was fixed by adopting dead angle and distance from station 16. An original reference mark was surveyed and shown as a New Connection from this corner to prove the fix of station 37 agreed with other adjoining surveys.
- Station 113 was fixed by the original reference mark and the relationship back to station 37 revealed dead bearing and distance for the various boundaries.
- Boundaries 113-85-88 were determined by adopting dead angles and distances, as no original marks were present at stations between.

**REFERENCE MARKS**

STN	TO	ORIGIN	BEARING	DIST	
1	OIP	2/CP895028	77°12'20"	1.145	New Ref
1	OIP gone	3/IS140580	6°03'50"	4.598	
16	OIP gone	17/RP843108	61°44'05"	0.91	
16	Pin		342°21'15"	1.43	
37	O.Screw In Kerb	20/SP231048	51°15'40"	47.944	New Conn
40	Screw In Kerb		226°25'15"	6.945	
53	Screw In Kerb		121°39'45"	7.251	
71	Pin		161°14'30"	0.662	
78	OIP	4/CP895028	300°38'25"	1.082	
78	Screw In Conc		45°25'10"	8.717	
85	Pin		58°22'	1.352	
100	Plug In Kerb fd		148°42'55"	5.55	
100	O.Screw In Kerb	5/CP895028	209°09'30"	10.233	New Conn
101	Screw In Kerb		152°22'35"	5.143	
102	Screw In Kerb		300°22'55"	4.672	
103	Screw In Kerb		54°28'30"	4.709	
104	Screw In Kerb		60°55'15"	5.245	
105	Screw In Kerb		304°29'15"	5.123	
106	Screw In Kerb		31°03'40"	6.915	
107	Screw In Kerb		52°37'	5.017	
108	Screw In Kerb		85°46'20"	5.388	
109	Screw In Kerb		53°50'40"	5.158	
110	Screw In Kerb		212°53'55"	10.77	
150	HH	3/SP185983	185°47'45"	64.134	New Conn
150	HH	3/SP185983	185°47'45"	65.372	New Conn
150	HH	1/SP185983	346°35'35"	8.805	

**PERMANENT MARKS**

PM	ORIGIN	BEARING	DIST	NO	
1-OPM	19/SP176985	144°42'35"	74.656	90372	New Conn
100-OPM	14/SP185983	61°42'55"	216.61	155313	New Conn

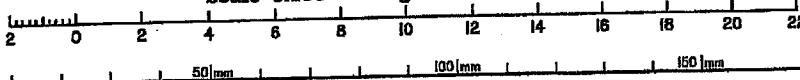
**REFERENCE MARKS CONT.**

STN	TO	ORIGIN	BEARING	DIST
54	Screw In channel		151°34'	7.033
63	Screw In Kerb		242°46'30"	4.719
66	Pin		62°17'30"	5.615
72	Pin		166°23'	4.24
86	Plug in channel		189°31'	7.022
88	Pin		229°57'	2.505
90	Pin		270°58'	0.763
151	O.Screw in kerb	12/SP161858	81°41'	8.755
308	Pin		226°55'	0.4

**M.G.A. COORDINATES GDA-94**

STN	EAST	NORTH	ZONE	P.U.	LINEAGE	METHOD	REMARKS
17	246 693.694	7 417 637.354	56	0-013	Derived	AUSPOS	Peg
101	246 854.133	7 417 620.821	56	0-044	Derived	AUSPOS	Peg

Scale 1:150 - Lengths are in Metres.



State copyright reserved.

Insert Plan Number **SP275041**