



Mark Shore

Sales & Marketing
Specialist
Auctioneer

M 0418 799 222
E Mark.shore@raywhite.com



Price List
August 2017

Ray White Rockhampton Mark Shore P 07 4923 0000 F 07 4926 1538
www.raywhiterockhampton.com/vacantland

Ray White

Lot No.	Street	Size	Price	Status
Stage 19				
1	Bushpea Court	960m ²	\$185,900	
2	Bushpea Court	711m ²	\$166,900	
3	Bushpea Court	702m ²	\$166,900	SOLD
4	Bushpea Court	703m ²	\$166,900	SOLD
5	Bushpea Court	774m ²	\$168,900	
6	Bushpea Court	1099m ²	\$189,900	SOLD
7	Bushpea Court	715m ²	\$169,900	
8	Bushpea Court	715m ²	\$169,900	
9	Bushpea Court	796m ²	\$176,900	
10	Foxglove Avenue	1061m ²	\$187,900	
11	Foxglove Avenue	771m ²	\$173,900	
12	Foxglove Avenue	733m ²	\$169,900	
13	Foxglove Avenue	701m ²	\$167,900	
14	Foxglove Avenue	733m ²	\$169,900	
15	Foxglove Avenue	701m ²	\$167,900	
16	Foxglove Avenue	733m ²	\$169,900	
17	Foxglove Avenue	701m ²	\$167,900	
18	Foxglove Avenue	733m ²	\$169,900	
19	Foxglove Avenue	701m ²	\$167,900	
20	Foxglove Avenue	733m ²	\$169,900	
21	Foxglove Avenue	701m ²	\$167,900	SOLD
22	Foxglove Avenue	732m ²	\$169,900	
23	Foxglove Avenue	702m ²	\$167,900	SOLD
24	Foxglove Avenue	882m ²	\$173,900	SOLD
25	Foxglove Avenue	971m ²	\$179,900	SOLD
26	Foxglove Avenue	1031m ²	\$189,900	SOLD

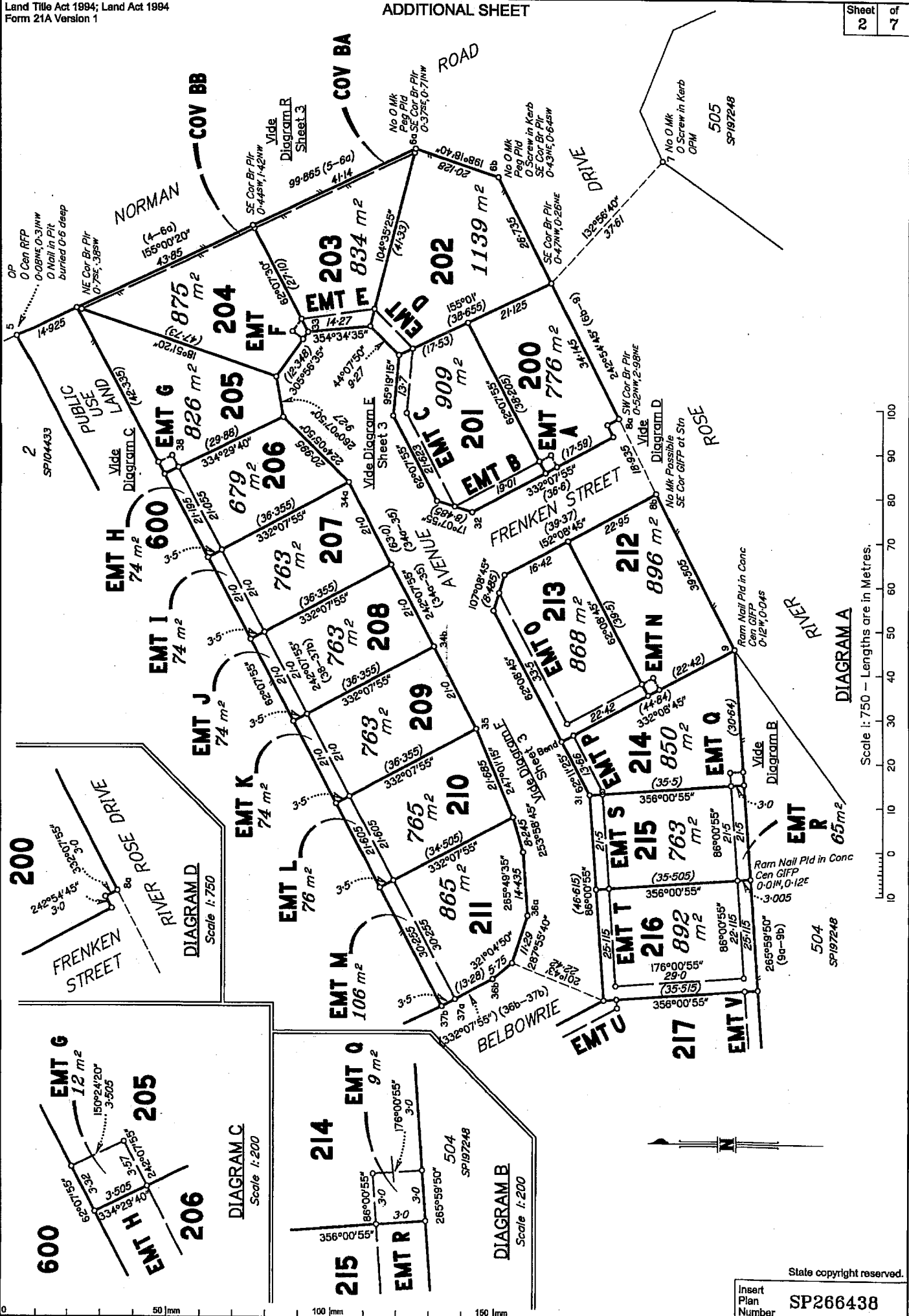
27	Foxglove Avenue	762m ²	\$169,900	SOLD
28	Plumb Drive	744m ²	\$171,900	SOLD
29	Plumb Drive	807m ²	\$169,900	SOLD
30	Plumb Drive	782m ²	\$171,900	SOLD
31	Plumb Drive	720m ²	\$168,900	
32	Foxglove Avenue	748m ²	\$168,900	
33	Plumb Drive	952m ²	\$188,900	
34	Snow Gum Street	805m ²	\$173,900	SOLD
35	Snow Gum Street	722m ²	\$169,900	SOLD
36	Snow Gum Street	716m ²	\$168,900	SOLD
37	Snow Gum Street	710m ²	\$168,900	SOLD
38	Snow Gum Street	705m ²	\$168,900	
39	Snow Gum Street	755m ²	\$171,900	
40	Bushpea Court	861m ²	\$178,900	SOLD
41	Foxglove Avenue	805m ²	\$176,900	SOLD
42	Foxglove Avenue	805m ²	\$176,900	SOLD
43	Foxglove Avenue	805m ²	\$176,900	SOLD
44	Foxglove Avenue	805m ²	\$176,900	SOLD
45	Foxglove Avenue	805m ²	\$176,900	SOLD
46	Foxglove Avenue	805m ²	\$176,900	SOLD

These prices are subject to change without notification

CONTACT MARK SHORE ON 0418 799 222



Ray White Rockhampton
Cnr Yaamba Rd & Macartney St
North Rockhampton Qld 4701
Telephone: (07) 4923 0000
Facsimile: (07) 4926 1538



State copyright reserved.

Insert
Plan
Number

SP266438

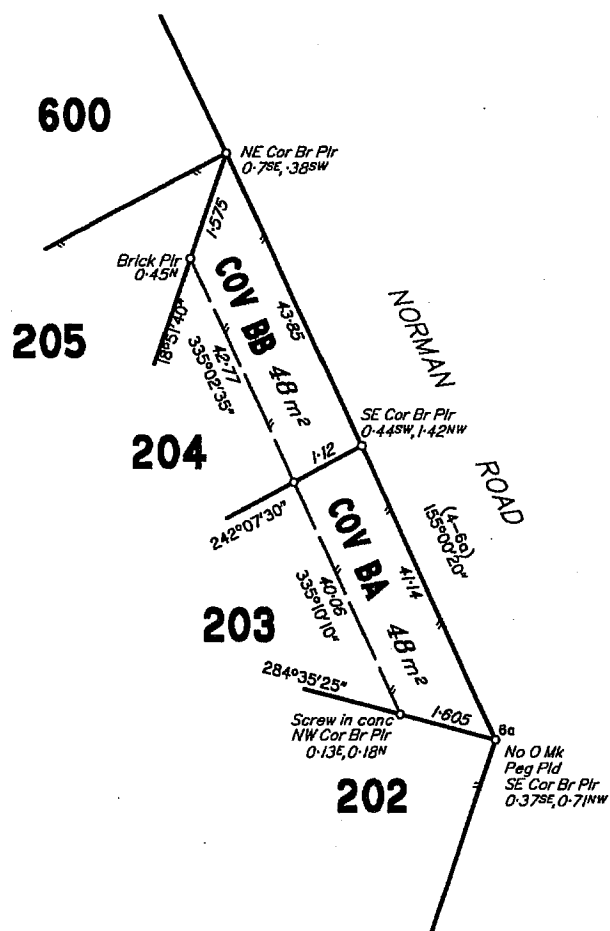


DIAGRAM R
Not to Scale

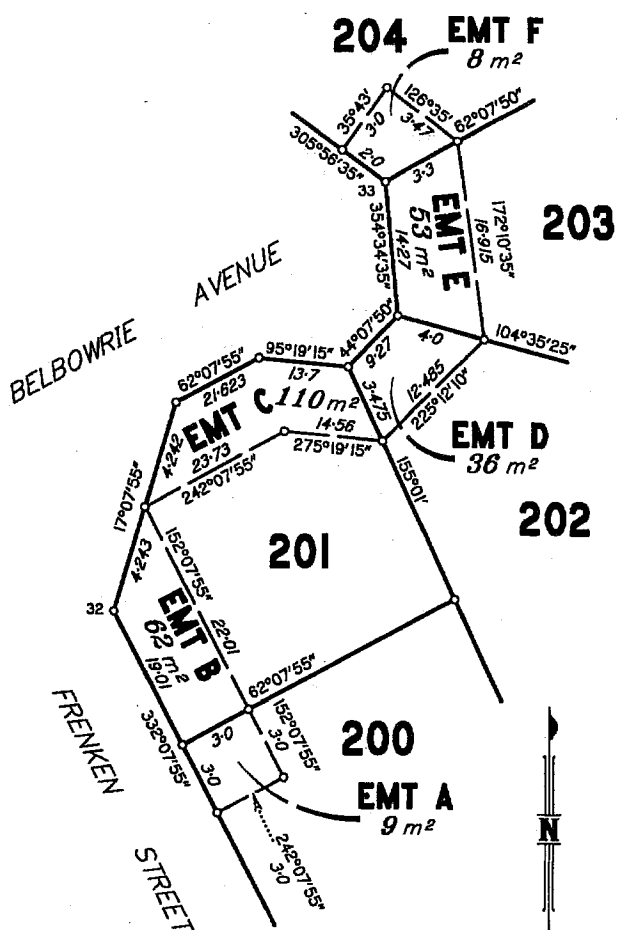


DIAGRAM E
Not to Scale

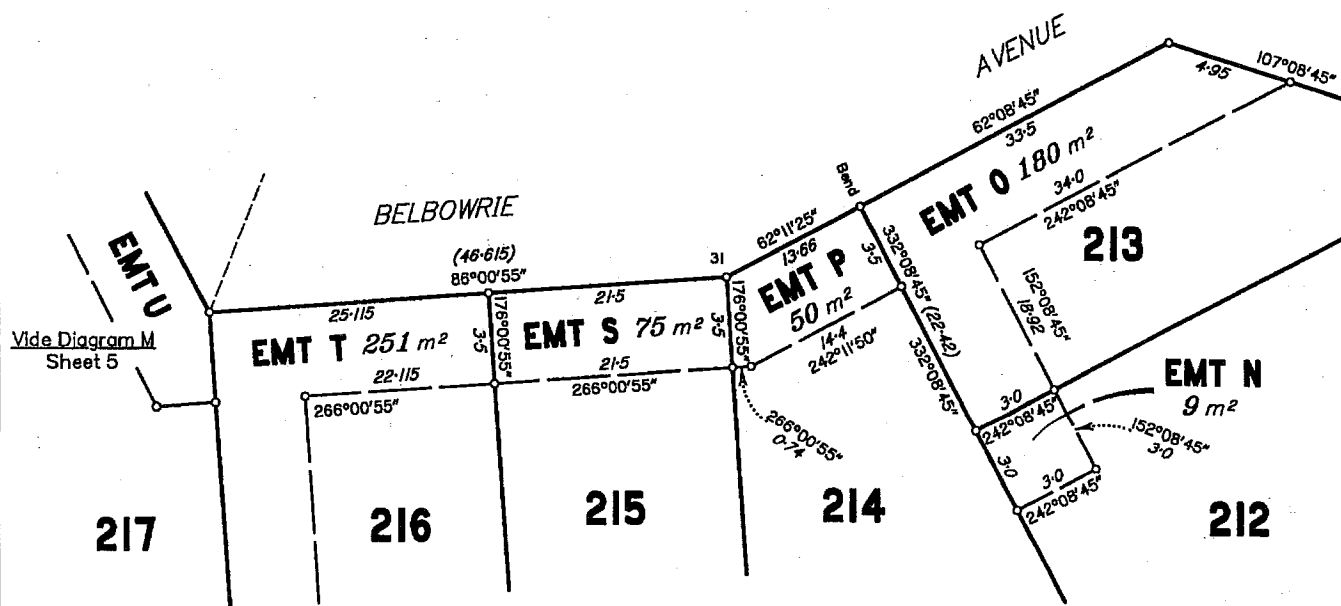
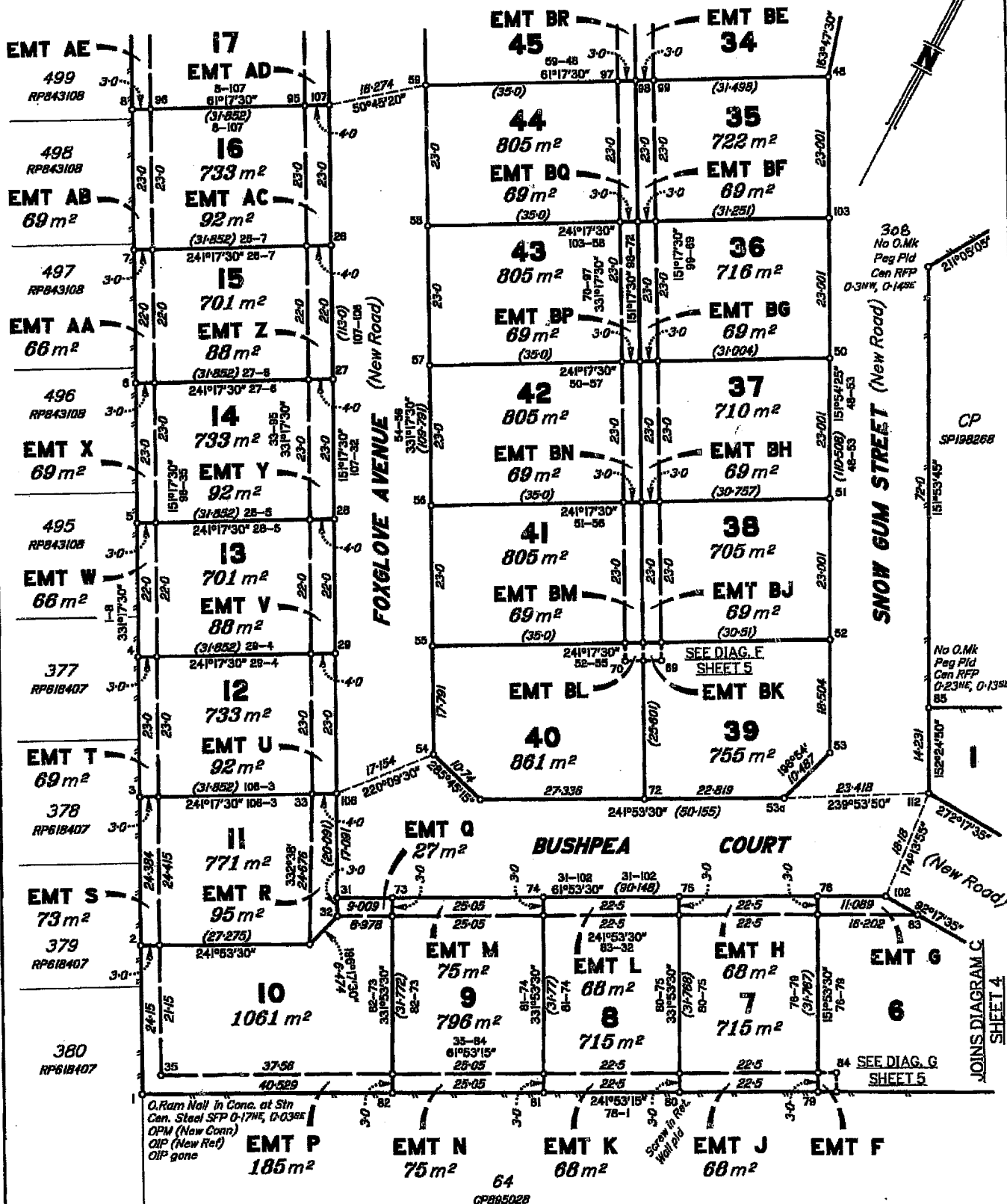


DIAGRAM F
Not to Scale

DIAGRAM B
SCALE 1:600

JOINS DIAGRAM A
SHEET 2

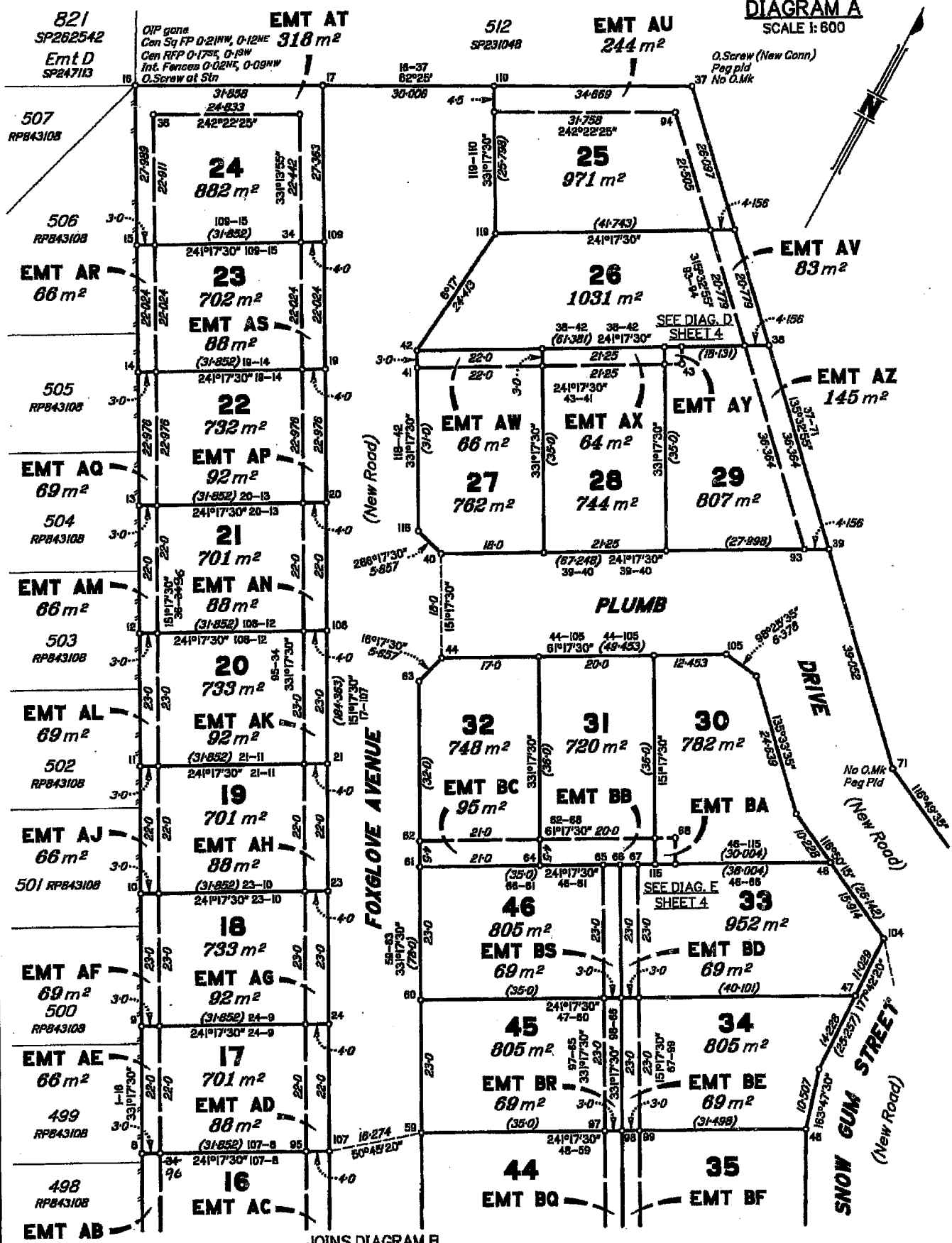


Scale 1:600 - Lengths are in Metres.

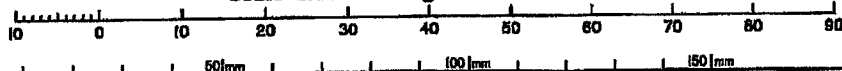
State copyright reserved.

Insert Plan Number **SP275041**

DIAGRAM A
SCALE 1:600



Scale 1:600 - Lengths are in Metres.



State copyright reserved.

Insert Plan Number SP275041

EMT J EMT F

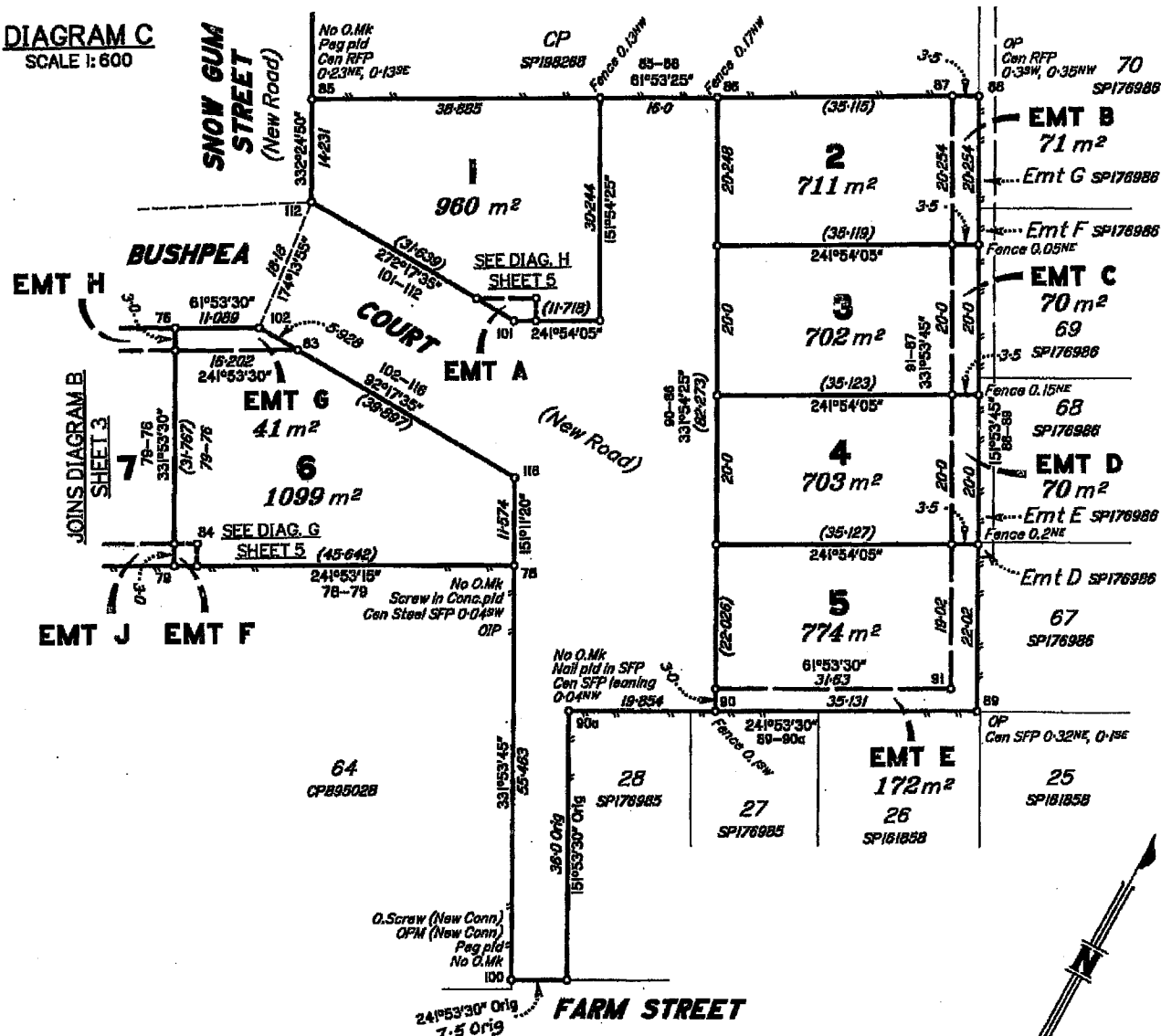


Diagram of a rectangular lot with dimensions and bearings. The lot is bounded by EMT AX to the west, EMT AY to the east, and a vertical line to the south. The top boundary is a horizontal line with a bearing of $61^{\circ}17'30''$ and a distance of 3-0. The right boundary is a vertical line with a bearing of $151^{\circ}17'30''$ and a distance of 3-0. The bottom boundary is a horizontal line with a bearing of $241^{\circ}17'30''$ and a distance of 43. The left boundary is a vertical line with a bearing of $339^{\circ}17'30''$ and a distance of 3-0. The area of the lot is $9 m^2$. The lot is numbered 26, 28, and 29.

The map shows a grid of streets and lots. The central area is labeled 'EMT' and is divided into several blocks. Block 32 is to the west, Block 31 is to the north, Block 30 is to the northeast, Block 33 is to the southeast, and Block 46 is to the southwest. The central area is labeled 'EMT BC', 'EMT BB', 'EMT BA', 'EMT BS', and 'EMT BD'. A large area is labeled '90 m²' and another '16 m²'. The map includes lot numbers (64, 65, 66, 67, 115, 117) and bearings (e.g., 61°17'30", 24°17'30").

DIAGRAM F
SCALE 1:150

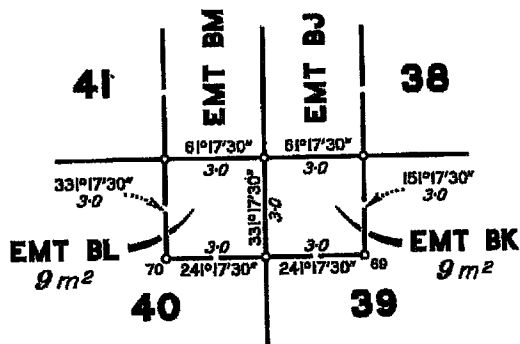


DIAGRAM G
SCALE 1:150

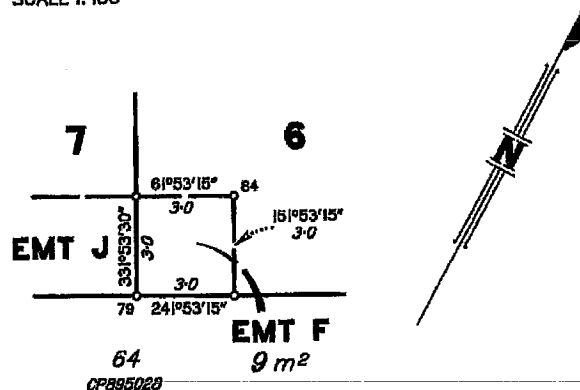
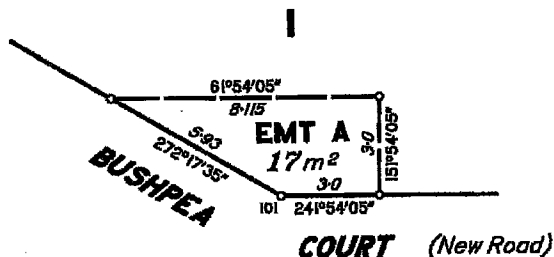


DIAGRAM H
SCALE 1:150



Reinstatement Report:

Plans Used: CP895028, RP843108, SP176985, SP176986, SP185983 & IS140580

- The eastern boundary of this estate reinstated from original reference marks and boundary marks at stations 113, 150, 151, 88 and 89 and distances from previous surveys adopted.
- Station 90a determined by maintaining a straight line 150-90a and dead distance from station 90.
- Station 100 reinstated by determining a new connection to the O.Screw placed nearby - station 5 on CP895028 and OIP at station 78 to confirm reinstatement.
- Southern boundary (ie Line 78-1) was fixed by original reference marks off stations 78 and 1, with dead distance confirmed between the two.
- Western boundary (ie Line 1-16) was reinstated by original boundary corner marks at stations 1 and 16 and OPM90372 from station 1 (New Conn). The OIP at station 1 was thence given a new reference. Distances between stations 1 & 16 agreed with previous surveys.
- The NE corner of the estate (ie Station 37) was fixed by adopting dead angle and distance from station 16. An original reference mark was surveyed and shown as a New Connection from this corner to prove the fix of station 37 agreed with other adjoining surveys.
- Station 113 was fixed by the original reference mark and the relationship back to station 37 revealed deed bearing and distance for the various boundaries.
- Boundaries 113-85-88 were determined by adopting deed angles and distances, as no original marks were present at stations between.

REFERENCE MARKS

STN	TO	ORIGIN	BEARING	DIST	
1	OIP	2/CP895028	77°12'20"	1-145	New Ref
1	OIP gone	3/IS140580	6°03'50"	4-538	
16	OIP gone	17/RP843108	61°44'05"	0-91	
16	Pin		342°21'15"	1-43	
37	O.Screw in Kerb	20/SP231048	51°15'40"	47-944	New Conn
40	Screw in Kerb		226°25'15"	6-945	
53	Screw in Kerb		121°39'45"	7-251	
71	Pin		161°14'30"	0-662	
78	OIP	4/CP895028	300°38'25"	1-082	
78	Screw in Conc		45°25'10"	8-717	
85	Pin		58°22'	1-352	
100	Plug in Kerb fd		148°42'55"	5-55	
100	O.Screw in Kerb	5/CP895028	209°09'30"	10-233	New Conn
101	Screw in Kerb		152°22'35"	5-143	
102	Screw in Kerb		300°22'55"	4-672	
103	Screw in Kerb		54°28'30"	4-709	
104	Screw in Kerb		60°55'15"	5-245	
105	Screw in Kerb		304°29'15"	5-123	
106	Screw in Kerb		31°03'40"	6-915	
107	Screw in Kerb		52°37'	5-017	
108	Screw in Kerb		86°46'20"	5-386	
109	Screw in Kerb		53°50'40"	5-158	
110	Screw in Kerb		212°53'55"	10-77	
150	O.Screw in Kerb	3/SP185983	161°06'45"	64-134	New Conn
150	O.Screw in M/H	3/SP185983	109°38'26"	85-372	New Conn
113	O.Screw in Kerb	1/SP185983	346°35'35"	6-805	

PERMANENT MARKS

PM	ORIGIN	BEARING	DIST	NO
1-OPM	19/SP176985	144°42'35"	74-656	90372
100-OPM	14/SP185983	61°42'55"	218-61	155313

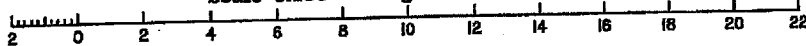
REFERENCE MARKS CONT.

STN	TO	ORIGIN	BEARING	DIST
54	Screw in channel		151°34'	7-033
63	Screw in Kerb		242°46'30"	4-719
66	Pin		62°17'30"	5-615
72	Pin		166°23'	4-24
88	Plug in channel		189°31'	7-022
88	Pin		229°57"	2-505
90	Pin		270°58"	0-763
151	O.Screw in kerb	12/SP161858	81°41'	8-755
308	Pin		226°55'	0-4

M.G.A. COORDINATES GDA-94

STN	EAST	NORTH	ZONE	P.U.	LINEAGE	METHOD	REMARKS
17	246 693-694	7 417 637-354	56	0-013	Derived	AUSPOS	Peg
101	246 854-133	7 417 620-821	56	0-044	Derived	AUSPOS	Peg

Scale 1:150 - Lengths are in Metres.



State copyright reserved.

Insert Plan Number **SP275041**