

Join the world's best
discover Sydney Hills



THE HILLS SHIRE

2016 ECONOMIC SUMMARY REPORT

Get the right information and make informed decisions

THE HILLS
Sydney's Garden Shire

STEPHEN GARRARD

Senior Co-Ordinator

Economic Development - Business

Telephone: 02 9843 0324

Mobile: 0421 205 815

Email: sgarrard@thehills.nsw.gov.au

GROW. INVEST. SUCCEED

www.thehills.nsw.gov.au



Summary

The Hills Shire, commonly referred to as The Sydney Hills is located in Sydney's northern suburbs about 30 kilometres from the Sydney CBD. The Sydney Hills is bounded by Hawkesbury Shire in the north, Hornsby Shire in the east, Parramatta City in the south and Blacktown City in the west.

The Sydney Hills occupies an area of 401 square kilometres stretching from Oatlands in the south to Wisemans Ferry in the north. The Shire is centrally located in Sydney's North, adjacent to the M2 Hills, M7 Motorways, Sydney Metro Northwest (the first fully automated metro rail system in Australia) and North West growth centre, a major growth area for the Sydney basin. Two thirds of the Shire is rural land, some of which is used for farming and other agricultural industries. The Sydney Hill's central location allows businesses and organisations to tap into

the growing commercial business areas between the North Shore and the Sydney Hills, the legal community of Parramatta and the rapidly expanding transport, warehousing and distribution hub along the M7.

With Norwest Business Park at its heart, The Sydney Hills is one of Sydney's hidden gems for business. With a rapidly growing economy totalling \$8.82 Billion in 2014 and a strong workforce, The Sydney Hills is fast becoming known as an elite service hub for businesses providing professional and financial services to companies located across Western Sydney.

The Sydney Hills has a major employment node located near brand new homes and planned neighbourhoods, some of the state's top schools, and offers a relaxed lifestyle surrounded by parks, gardens and bushland.

Population



187,703

People

Employment



56,850

Jobs

Gross Regional Product



8.824

Billion

Value Added



8.079

Billion

Tourism Output



363.019

Million

Tourism Employment



2,219

Jobs

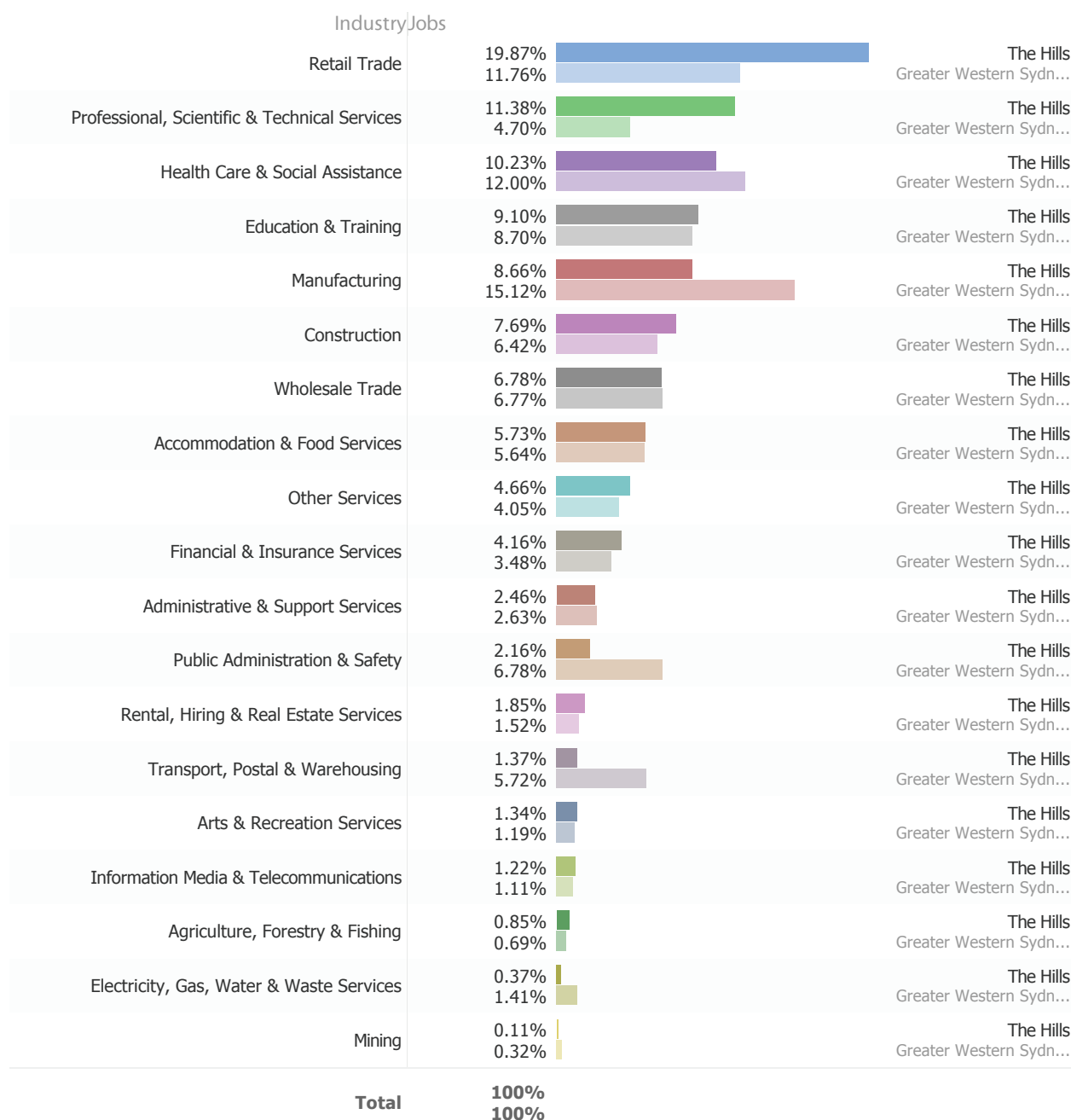
Employment by Industry

It is estimated that 56,850 people work in The Hills. The Hills represents 9.24 % of the 615,223 people working in Greater Western Sydney, 1.90 % of the 2,996,038 people working in New South Wales and 0.58 % of the 9,824,444 people working in Australia.

The Hills

Employment by Industry

► All Industries - All Zones



Source: Latest [REMPPLAN](#) data incorporating Australian Bureau of Statistics' (ABS) June 2014 Gross State Product, 2012 / 2013 National Input Output Tables and 2011 Census Place of Work Employment Data.

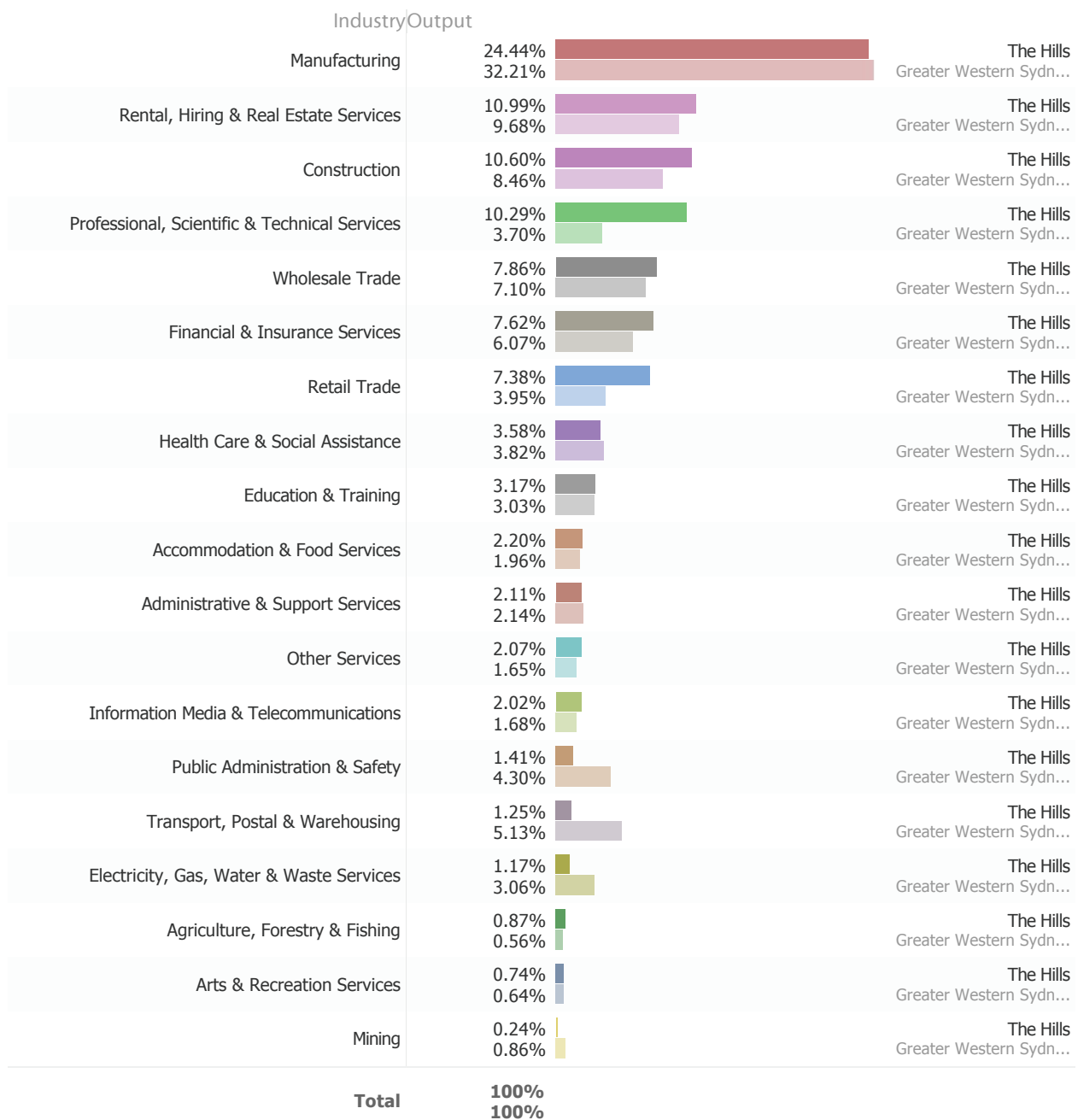
Output by Industry

The output generated by the The Hills economy is estimated at \$18.154 billion. The Hills represents 8.36 % of the \$217.258 billion in output generated in Greater Western Sydney, 1.81 % of the \$1.003 trillion in output generated in New South Wales and 0.55 % of the \$3.294 trillion in output generated in Australia.

The Hills

Output by Industry

► All Industries - All Zones



Source: Latest [REMPPLAN](#) data incorporating Australian Bureau of Statistics' (ABS) June 2014 Gross State Product, 2012 / 2013 National Input Output Tables and 2011 Census Place of Work Employment Data.

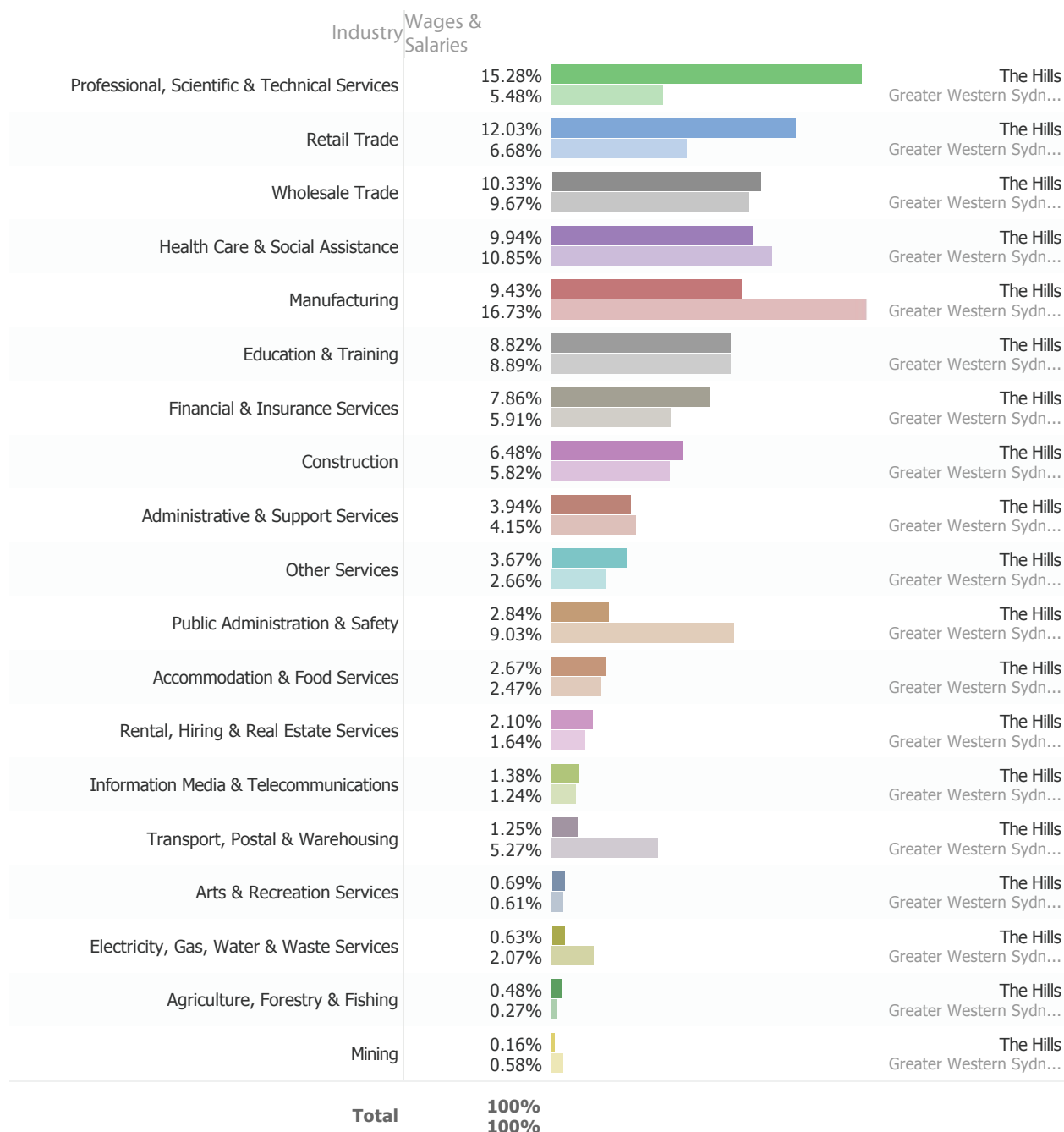
Wages and Salaries by Industry

The wages and salaries paid by businesses and organisations in The Hills is estimated at \$4.259 billion. The Hills represents 8.67 % of the \$49.147 billion in wages & salaries paid by businesses and organisations in Greater Western Sydney, 1.78 % of the \$239.696 billion in wages & salaries paid by businesses and organisations in New South Wales and 0.56 % of the \$766.085 billion in wages & salaries paid by businesses and organisations in Australia.

The Hills

Wages & Salaries by Industry

► All Industries - All Zones



Source: Latest [REMPAN](#) data incorporating Australian Bureau of Statistics' (ABS) June 2014 Gross State Product, 2012 / 2013 National Input Output Tables and 2011 Census Place of Work Employment Data.

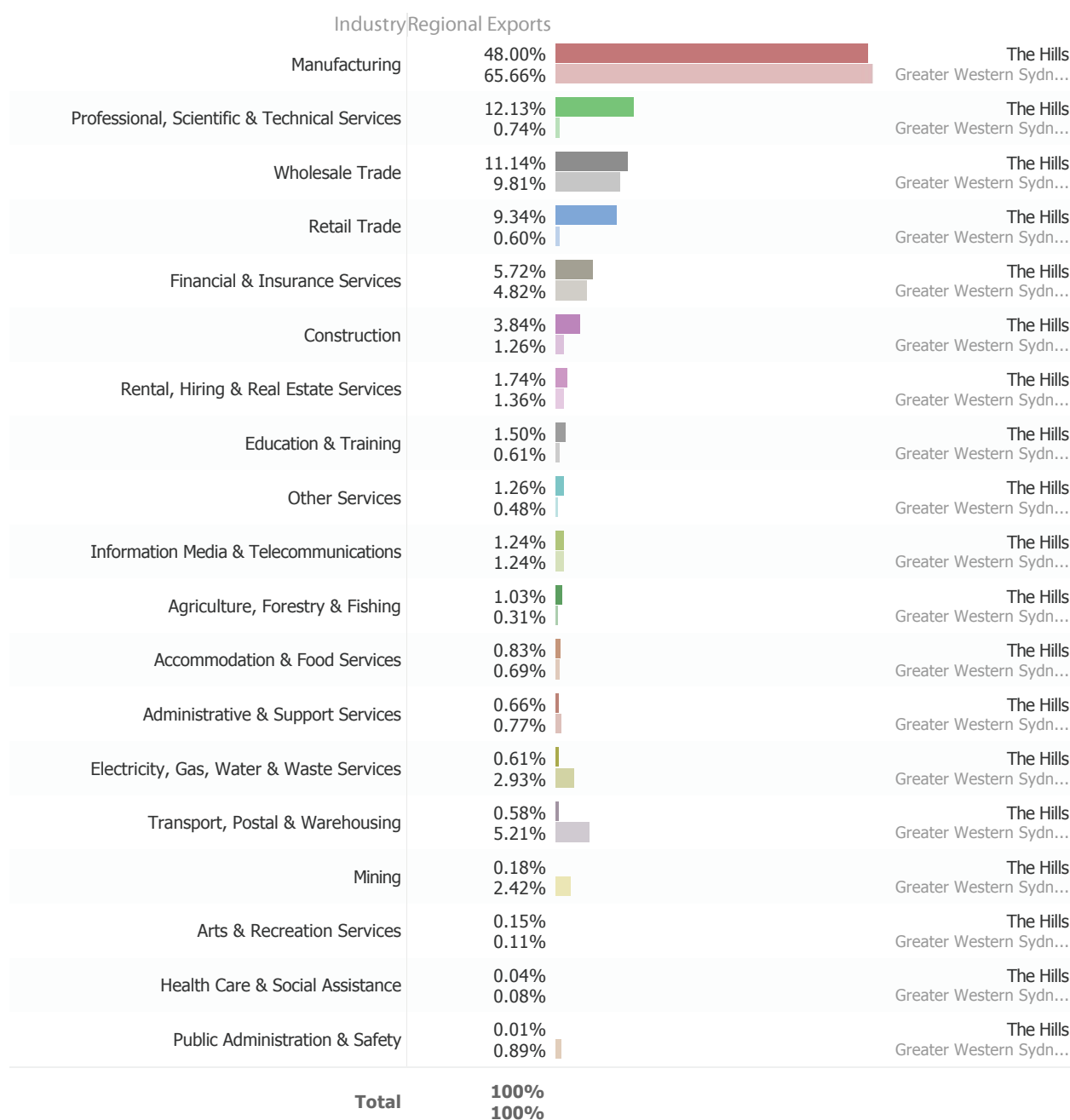
Regional Exports by Industry

The value of regional exports generated by the The Hills economy is estimated at \$5.425 billion.

The Hills

Regional Exports by Industry

► All Industries - All Zones



Source: Latest [REMPAN](#) data incorporating Australian Bureau of Statistics' (ABS) June 2014 Gross State Product, 2012 / 2013 National Input Output Tables and 2011 Census Place of Work Employment Data.

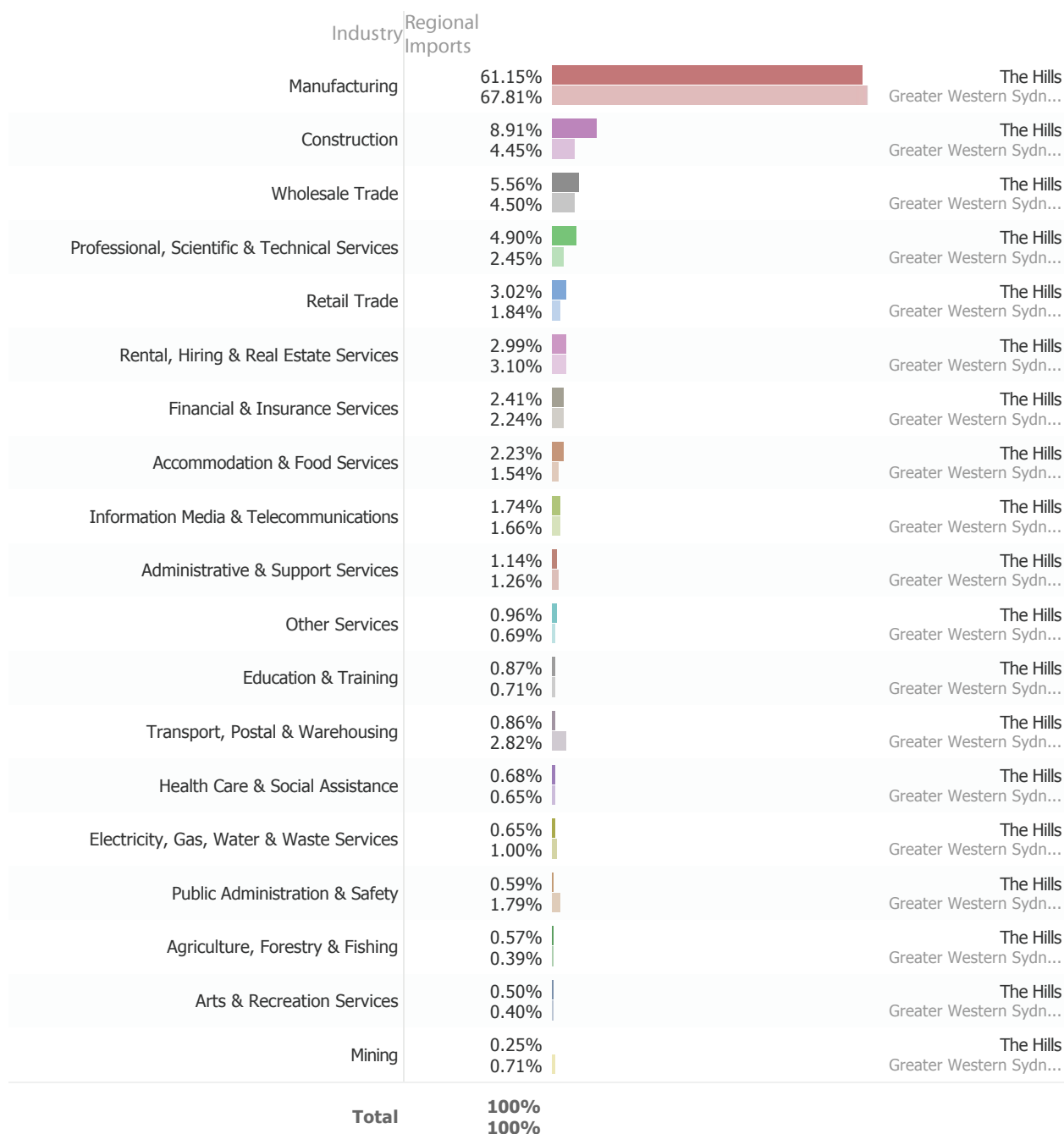
Regional Imports by Industry

The value of intermediate goods and services imported into The Hills by local industry sectors is estimated at \$4.609 billion.

The Hills

Regional Imports by Industry

► All Industries - All Zones



Source: Latest [REMPAN](#) data incorporating Australian Bureau of Statistics' (ABS) June 2014 Gross State Product, 2012 / 2013 National Input Output Tables and 2011 Census Place of Work Employment Data.

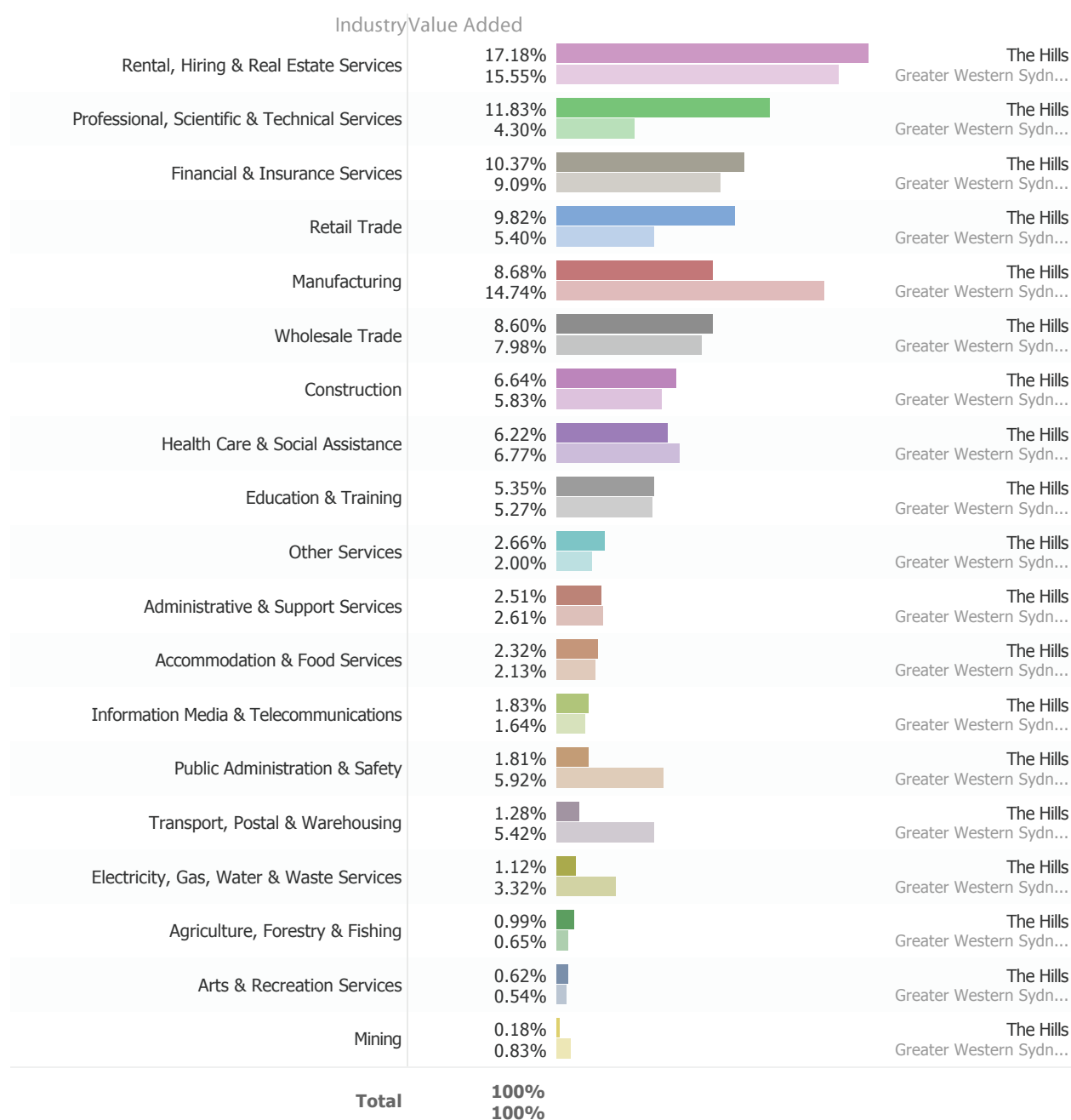
Value-Added by Industry

The total value added by the The Hills economy is estimated at \$8.079 billion. The Hills represents 8.59 % of the \$94.086 billion value added in Greater Western Sydney, 1.75 % of the \$460.678 billion value added in New South Wales and 0.54 % of the \$1.485 trillion value added in Australia.

The Hills

Value-Added by Industry

► All Industries - All Zones



Source: Latest [REMPLAN](#) data incorporating Australian Bureau of Statistics' (ABS) June 2014 Gross State Product, 2012 / 2013 National Input Output Tables and 2011 Census Place of Work Employment Data.

Gross Regional Product

The Hills' Gross Regional Product is estimated at \$8.824 billion. The Hills represents 8.59 % of Greater Western Sydney's GRP of \$102.713 billion, 1.79 % of New South Wales' Gross State Product (GSP) of \$492.478 billion and 0.56 % of Australia's GRP of \$1.584 trillion.

The Hills

Gross Regional Product

GRP Expenditure Method	The Hills	Greater Western Sydney
Household Consumption	\$8,109.895 M	\$91,839.486 M
Government Consumption	\$2,261.873 M	\$25,118.855 M
Private Gross Fixed Capital Expenditure	\$2,981.185 M	\$32,121.764 M
Public Gross Fixed Capital Expenditure	\$641.752 M	\$7,126.869 M
Gross Regional Expenses	\$13,994.706 M	\$156,206.974 M
plus Regional Exports	\$5,449.028 M	\$57,764.608 M
minus Domestic Imports	-\$7,843.170 M	-\$79,902.631 M
minus Overseas Imports	-\$2,776.143 M	-\$31,355.598 M
GRP	\$8,824.421 M	\$102,713.354 M
Population	169,872	1,923,694
Per Capita GRP	\$51,947	\$53,394
Per Worker GRP	\$155,223	\$166,953

Source: Latest [REMPPLAN](#) data incorporating Australian Bureau of Statistics' (ABS) June 2014 Gross State Product, 2012 / 2013 National Input Output Tables and 2011 Census Place of Work Employment Data.

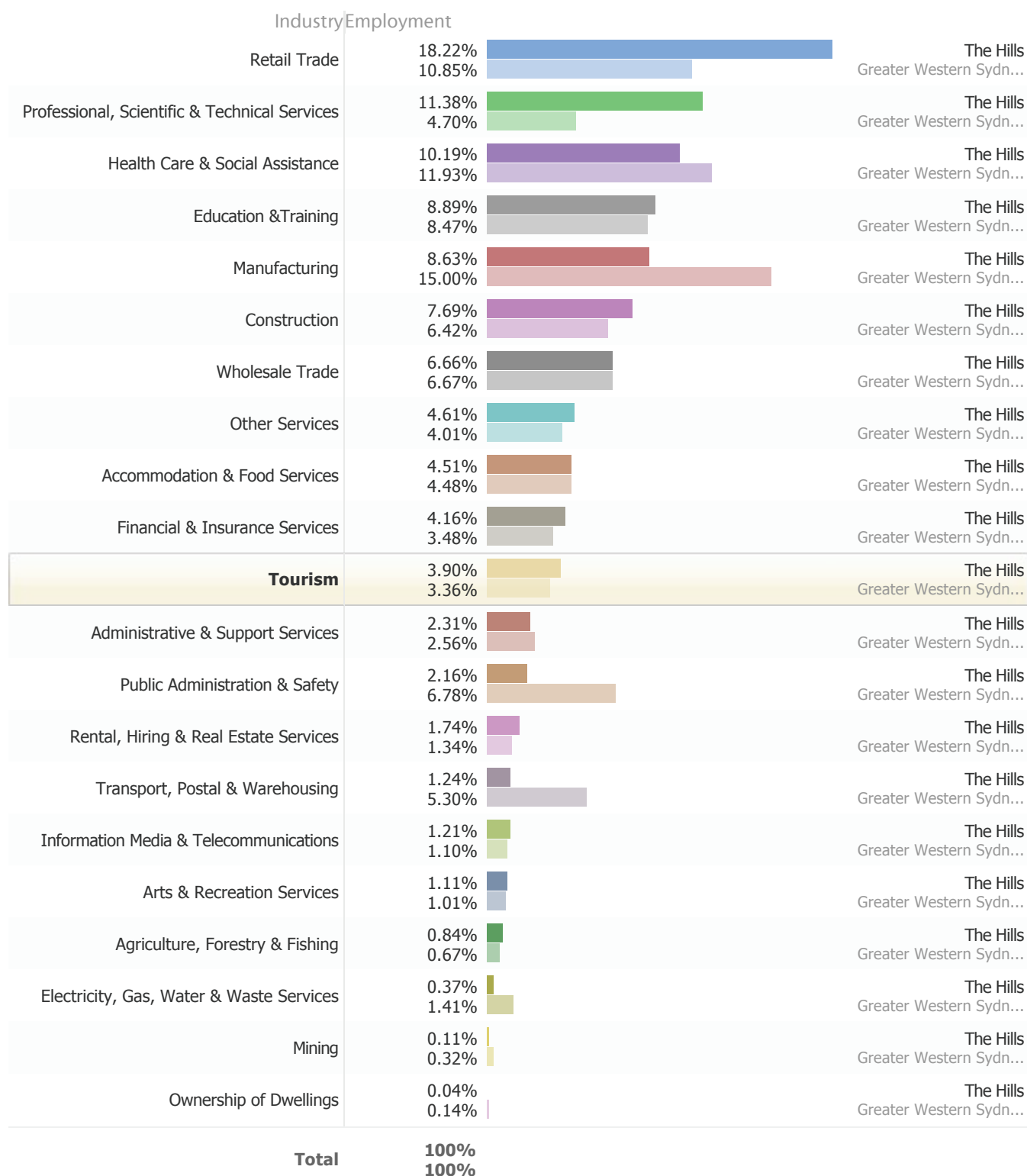
Tourism Employment

Of the 56,850 people working in The Hills it is estimated that 2,219 jobs are supported by tourism.

The Hills

Tourism Employment

► All Industries



Source: 2013-14, Australian Bureau of Statistics (ABS), Tourism Satellite Account.

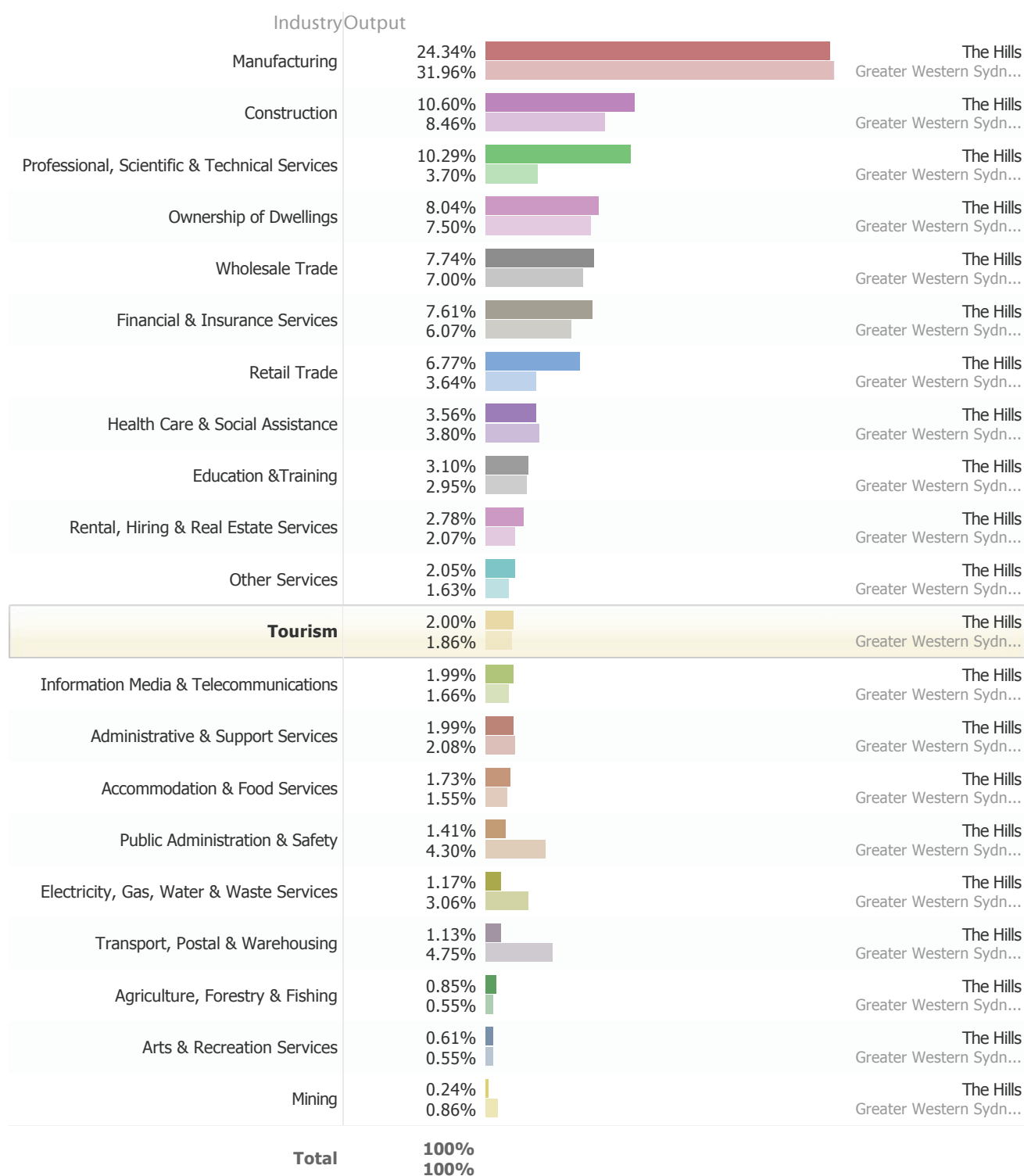
Tourism Output

Of The Hills' total output of \$18.154 billion it is estimated that \$363.019 million is generated from tourism.

The Hills

Tourism Output

► All Industries



Source: 2013-14, Australian Bureau of Statistics (ABS), Tourism Satellite Account.

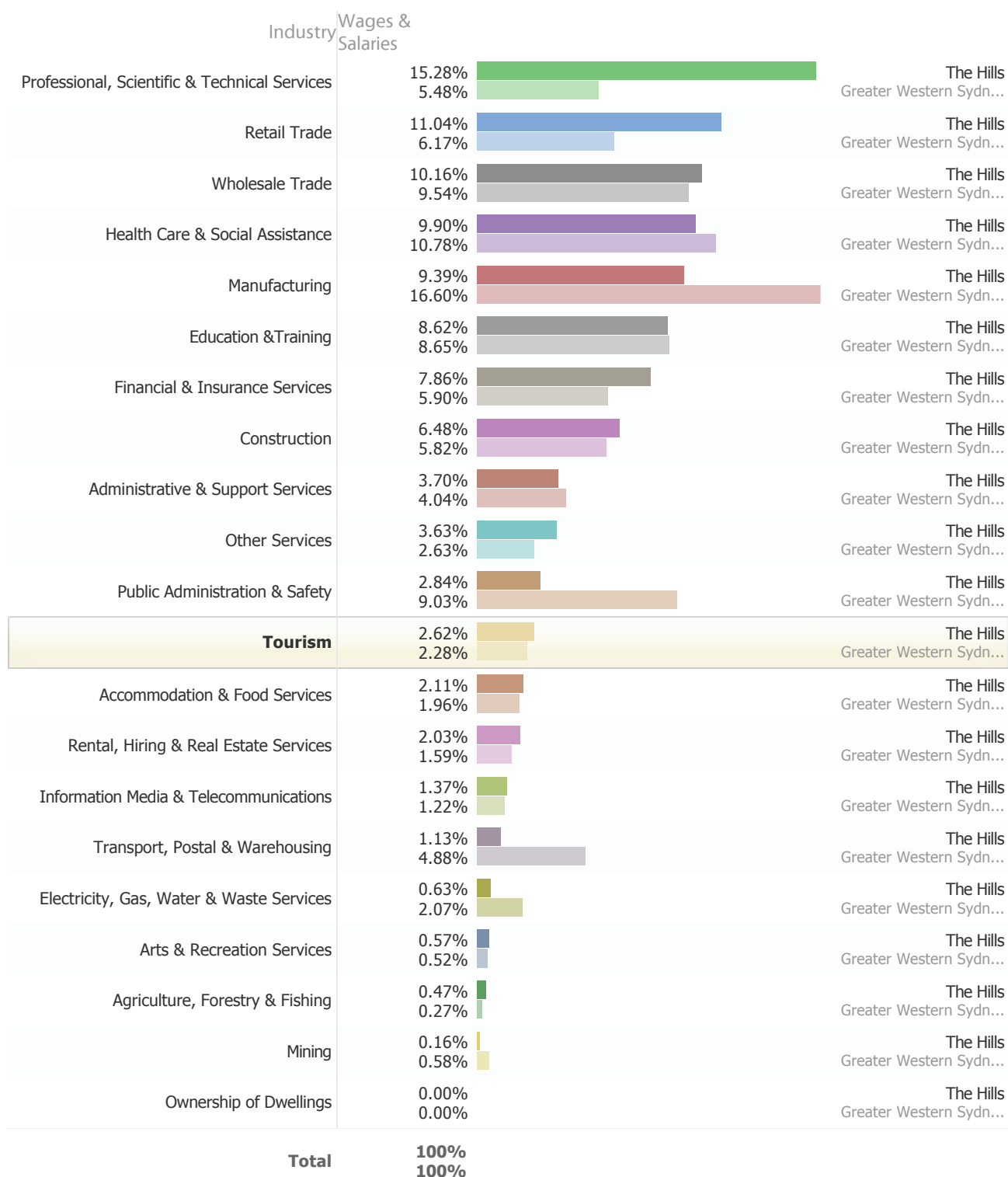
Tourism Wages and Salaries

Of the total wages & salaries paid by businesses and organisations to workers in The Hills of \$4.259 billion it is estimated that tourism contributes \$111.740 million.

The Hills

Wages & Salaries

► All Industries



Source: 2013-14, Australian Bureau of Statistics (ABS), Tourism Satellite Account.

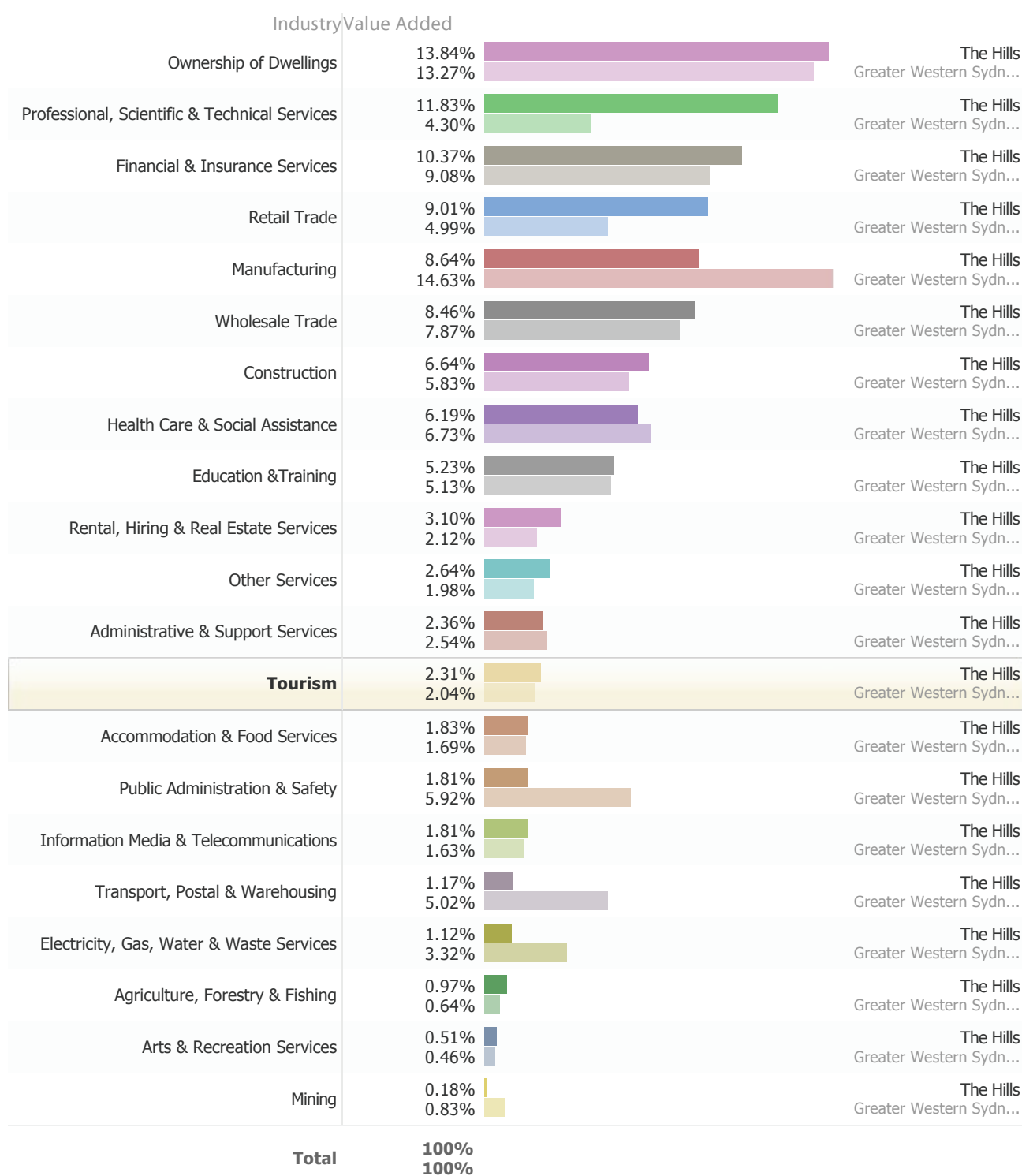
Tourism Value-Added

Of the total value added in the The Hills economy of \$8.079 billion it is estimated that tourism contributes \$186.709 million or 2.31 % percent.

The Hills

Tourism Value-Added

► All Industries

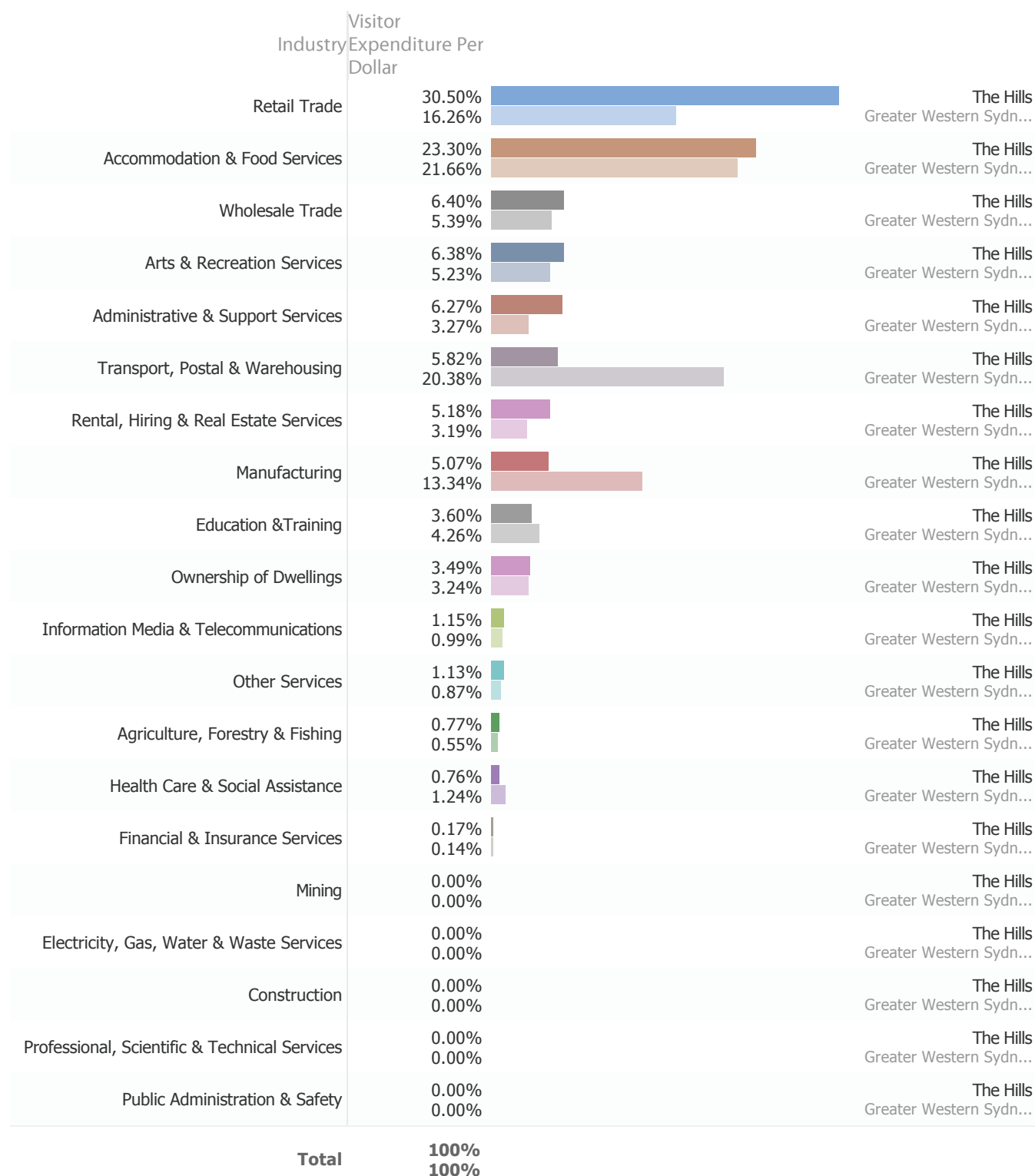


Tourism Visitor Expenditure Per Dollar

The Hills

Tourism Expenditure Per Dollar

► All Industries



Source: 2013-14, Australian Bureau of Statistics (ABS), Tourism Satellite Account.

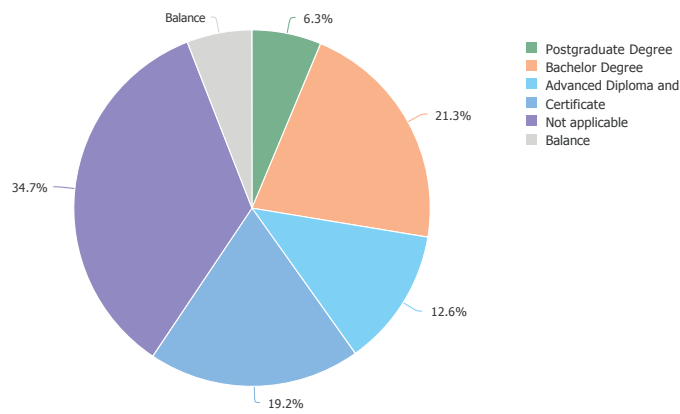
Workers Profile (Working in The Hills)

It is estimated that 56,850 people work in The Hills.

The Hills

Workers (Working in The Hills) - by Education

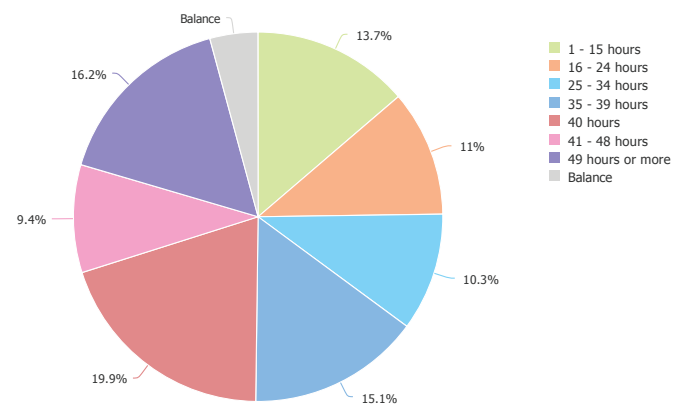
► All Industries



The Hills

Workers (Working in The Hills) - by Hours Worked

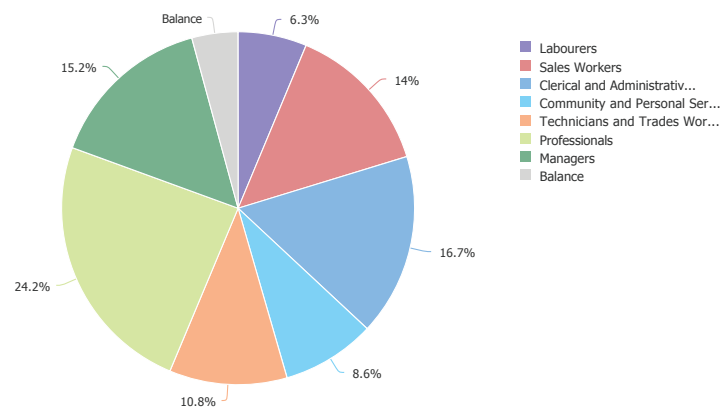
► All Industries



The Hills

Workers (Working in The Hills) - by Occupation

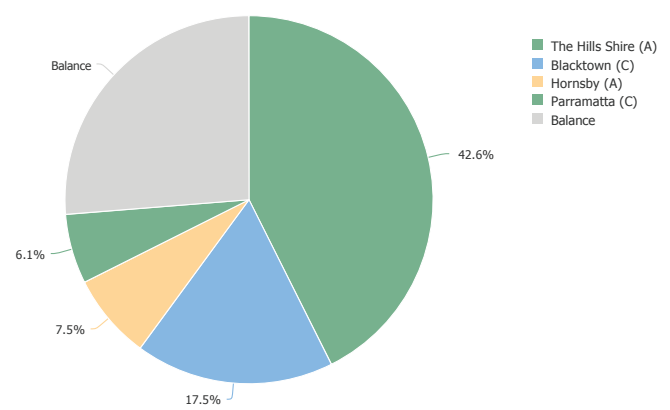
► All Industries



The Hills

Workers (Working in The Hills) - by Place of Usual Residence

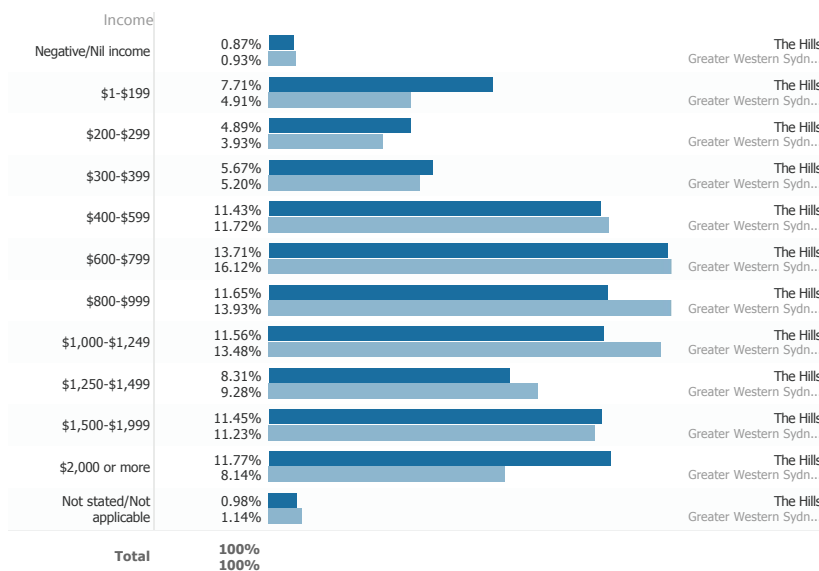
► All Industries



The Hills

Workers (Working in The Hills) - by Income

► All Industries

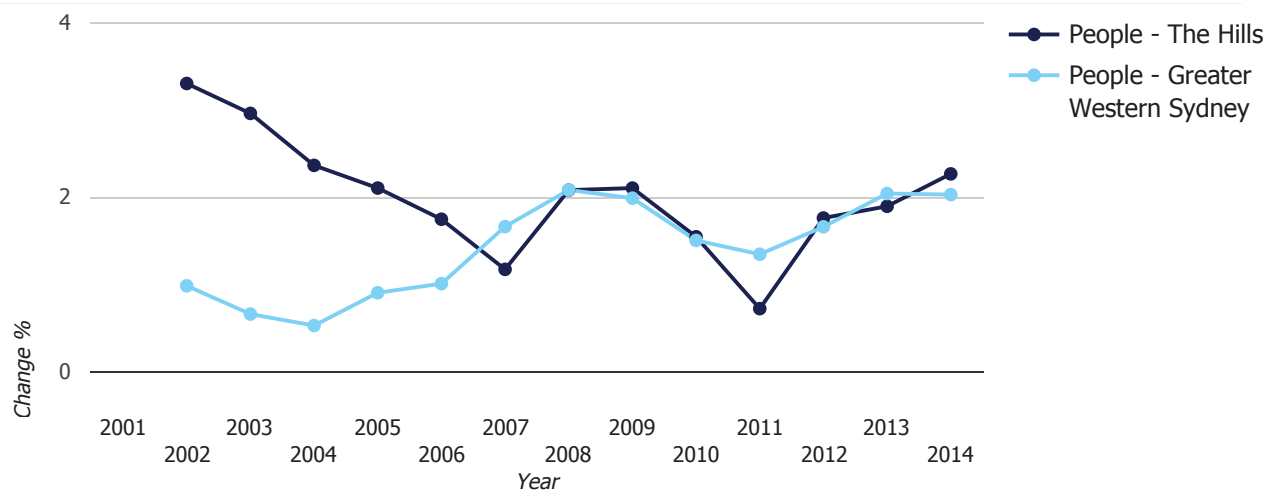


Source: Latest [REMPLAN](#) data incorporating Australian Bureau of Statistics' (ABS) 2011 Census Place of Work Employment Data.

Trends - Population

The Hills

Population



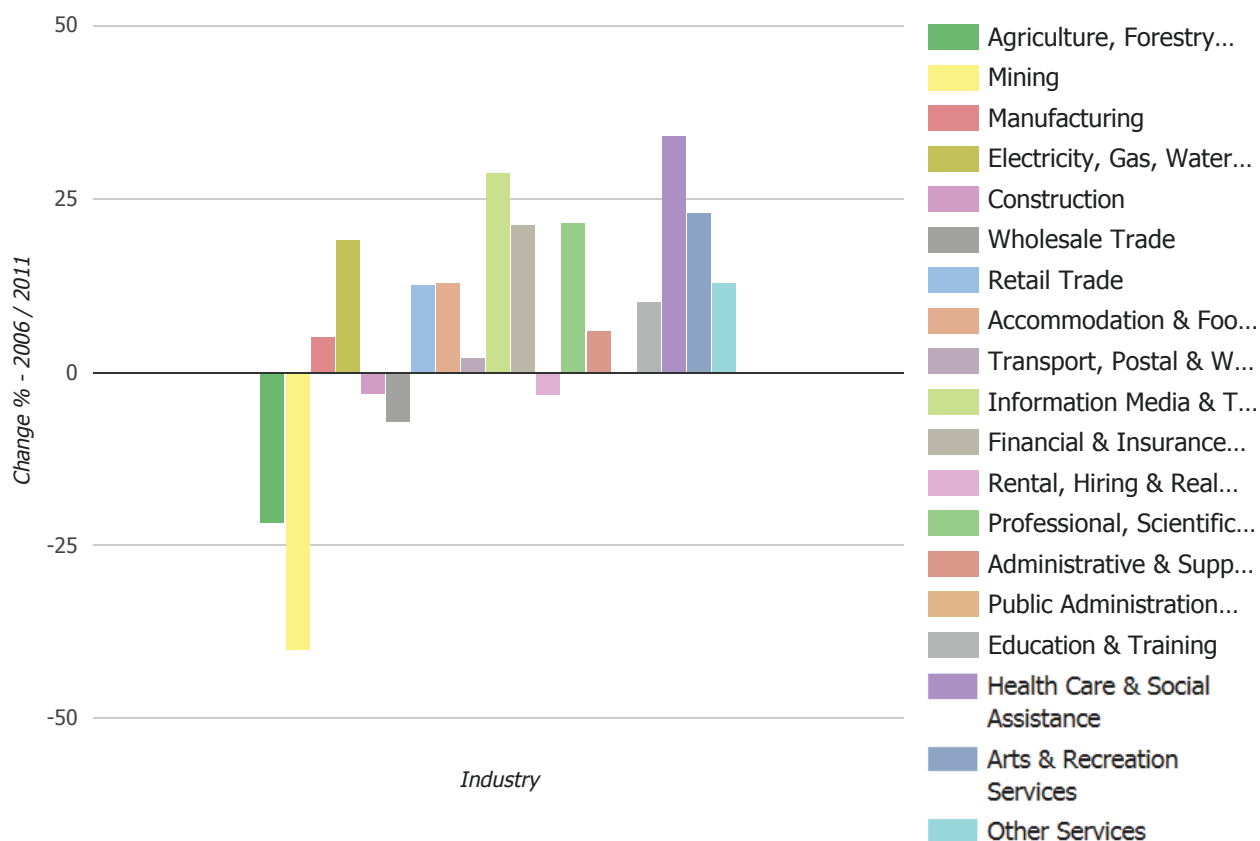
Population	The Hills	Greater Western Sydney
2001	145,110	1,766,674
2002	149,904 3.30% ↑	1,784,028 0.98% ↑
2003	154,342 2.96% ↑	1,795,766 0.66% ↑
2004	157,991 2.36% ↑	1,805,213 0.53% ↑
2005	161,315 2.10% ↑	1,821,509 0.90% ↑
2006	164,132 1.75% ↑	1,839,846 1.01% ↑
2007	166,054 1.17% ↑	1,870,406 1.66% ↑
2008	169,508 2.08% ↑	1,909,340 2.08% ↑
2009	173,074 2.10% ↑	1,947,292 1.99% ↑
2010	175,748 1.55% ↑	1,976,563 1.50% ↑
2011	177,014 0.72% ↑	2,003,133 1.34% ↑
2012	180,130 1.76% ↑	2,036,369 1.66% ↑
2013	183,543 1.89% ↑	2,077,936 2.04% ↑
2014	187,703 2.27% ↑	2,120,088 2.03% ↑

Source: Australian Bureau of Statistics, Regional Population Growth, Cat. 3218.0 (2013-14 data was released on 31 March 2015. 2014-15 data is expected to be available in March 2016).

Trends - Jobs

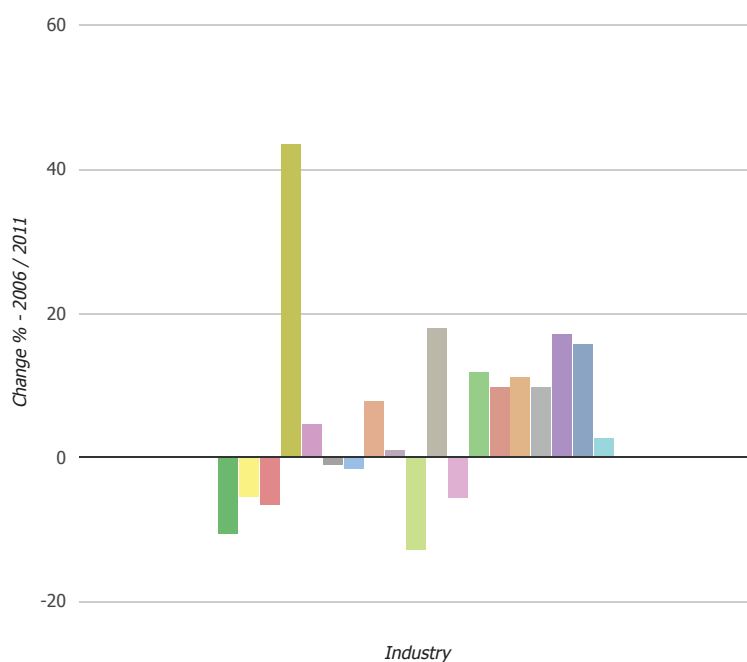
The Hills

% Change in Jobs (2006 - 2011)



Greater Western Sydney

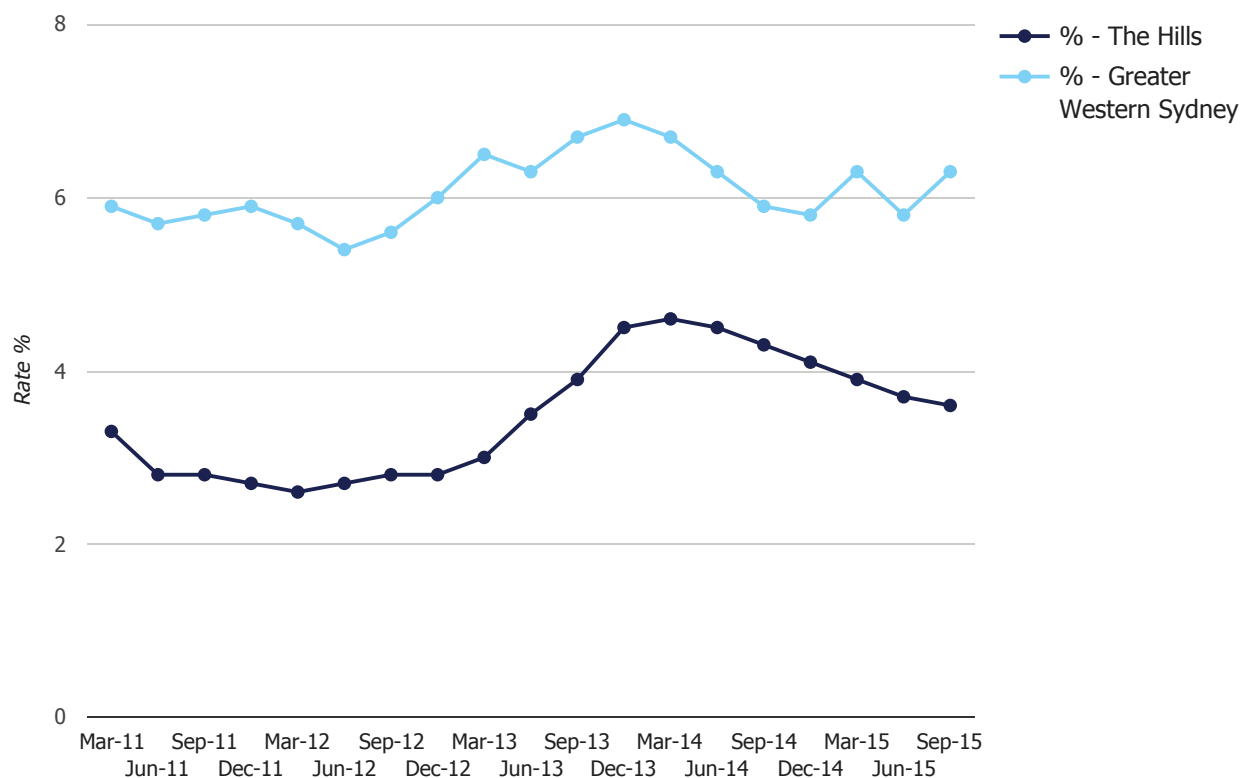
% Change in Jobs (2006 - 2011)



Trends - Unemployment Rate

The Hills

Unemployment Rate



Definition: The Small Area Labour Markets (SALM) data has been compiled by Australian Government Department of Employment. SALM data incorporates three primary datasets:

1. Centrelink data on people in receipt of Newstart or Youth Allowance (Other), by postcode (not including people in receipt of the Community Development Employment Projects Participant Supplement)
2. ABS Labour Force Survey data at the ABS Labour Force Region level
3. ABS Census of Population and Housing labour force data at the Statistical Local Area level, Statistical Area 2 level and Local Government Area level.

The estimates presented have been smoothed by Department of Employment using a four-quarter average to minimise the variability inherent in the estimates at the Statistical Local Area level, Statistical Area 2 level and Local Government Area level.

For states, territories and other large regions, unemployment rate data from the Australian Bureau of Statistics (ABS) Labour Force Survey is presented. The Labour Force Survey is based on a multi-stage area sample of private dwellings (currently approximately 26,000 houses, flats, etc.) and a list sample of non-private dwellings (hotels, motels, etc.), and covers approximately 0.32% of the civilian population of Australia aged 15 years and over.

Source: Department of Employment Small Area Labour Markets (SALM). (September Quarter 2015 was released in

Trends - Business Counts by Staff

The Hills

Business Counts (Staff)

► All Industries

Business Counts (Staff)			The Hills	Greater Western Sydney		
	Jun-12	Jun-13	Jun-14	Jun-12	Jun-13	Jun-14
Non employing	15,883	15,286 -3.8% ↓	15,824 3.5% ↑	96,288	91,398 -5.1% ↓	92,191 .9% ↑
1-4	8,386	8,068 -3.8% ↓	8,396 4.1% ↑	52,713	50,952 -3.3% ↓	52,943 3.9% ↑
5-19	2,140	2,124 -.7% ↓	2,237 5.3% ↑	13,723	13,644 -.6% ↓	13,837 1.4% ↑
20-199	462	466 .9% ↑	481 3.2% ↑	3,267	3,222 -1.4% ↓	3,341 3.7% ↑
200+	9	9 .0% ↓	12 33.3% ↑	60	72 20.0% ↑	72 .0% ↓
Total	26,880	25,953	26,950	166,051	159,288	162,384

Trends - Business Counts by Turnover

Business Counts (Turnover)

► All Industries

Business Counts (Turnover)			The Hills	Greater Western Sydney		
	Jun-12	Jun-13	Jun-14	Jun-12	Jun-13	Jun-14
Zero to \$50k	8,040	7,414 -7.8% ↓	7,598 2.5% ↑	46,544	42,413 -8.9% ↓	42,050 -.9% ↓
\$50k to less than \$100k	4,831	4,758 -1.5% ↓	4,647 -2.3% ↓	33,709	31,871 -5.5% ↓	31,083 -2.5% ↓
\$100k to less than \$200K	4,665	4,361 -6.5% ↓	4,806 10.2% ↑	28,686	27,784 -3.1% ↓	29,569 6.4% ↑
\$200k to less than \$500k	4,716	4,706 -.2% ↓	4,945 5.1% ↑	28,845	28,384 -1.6% ↓	29,858 5.2% ↑
\$500k to less than \$2m	3,282	3,361 2.4% ↑	3,461 3.0% ↑	19,090	19,471 2.0% ↑	19,794 1.7% ↑
\$2m or more	1,350	1,380 2.2% ↑	1,488 7.8% ↑	9,099	9,350 2.8% ↑	9,854 5.4% ↑
Total	26,884	25,980	26,945	165,973	159,273	162,208

Note: Percentage changes of business counts from year to year reflect entries and exists of business. It is important to note that the percentage changes also reflect turnover and staffing level changes in businesses. Therefore, a large percentage change, for example in businesses employing 200+ staff, does not necessarily mean an exist or entry of large firms but may instead relate to changes in staffing levels, resulting in a business being assigned to a different 'number of staff' cohort.

**Join the world's best
discover Sydney Hills**

THE HILLS
Sydney's Garden Shire

STEPHEN GARRARD

Senior Co-Ordinator

Economic Development - Business

Telephone: 02 9843 0324

Mobile: 0421 205 815

Email: sgarrard@thehills.nsw.gov.au

GROW. INVEST. SUCCEED

www.thehills.nsw.gov.au