

PEPPERS

CORAL COAST RESORT
AIRLIE BEACH

An investment opportunity that is all about you





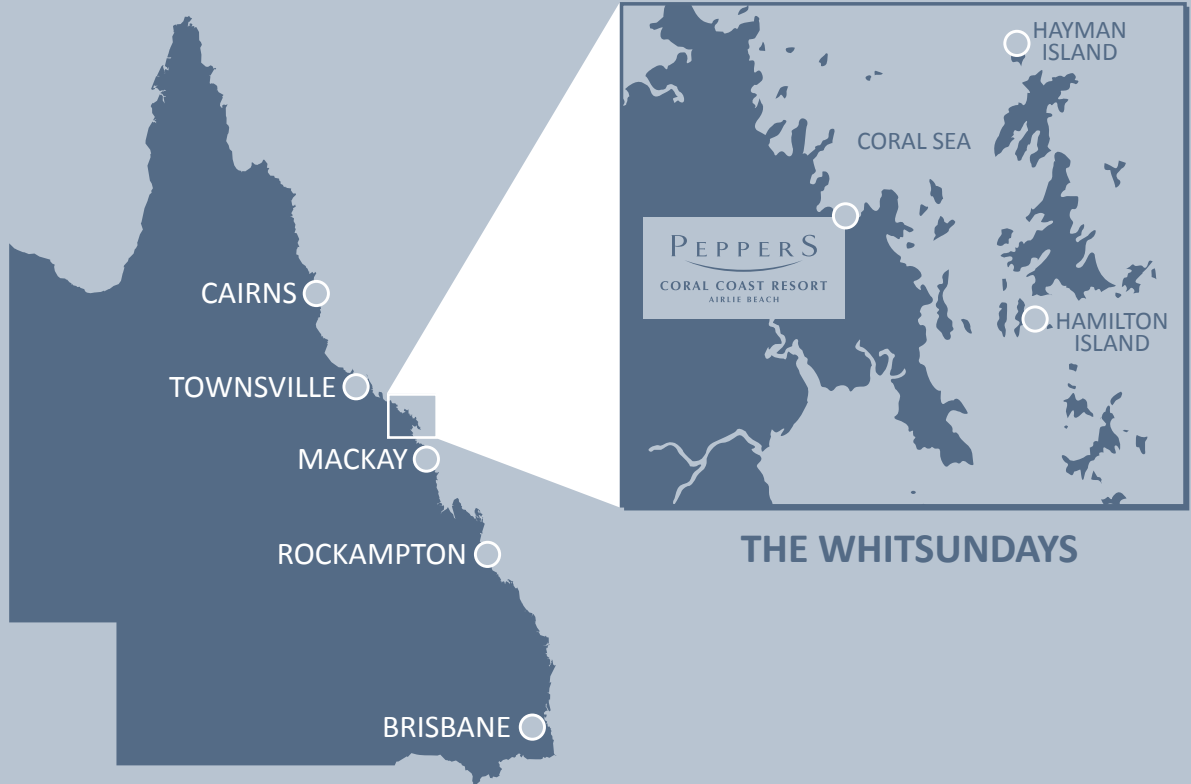
Whitehaven Beach

The Whitsundays — Gateway to the Great Barrier Reef

74 island wonders, located in the heart of the Great Barrier Reef, on the tropical coast of Queensland, Australia. A visit to the Whitsundays is a feast of the senses, surrounded by natural beauty, dotted with secluded beaches and friendly towns from which to explore. The hardest part is choosing how to fit it all in.

Explore this incredible diversity from the bow of a sailboat... cruise through the islands and drop anchor for a quick snorkel and wake up to a sunrise over world famous Whitehaven Beach. Enjoy the spoils of staying in your own resort apartment with Coral Sea views at Airlie Beach.

01



02



05



03



04



01 Map, 02 Fresh Water Lagoon, 03 Abel Point Marina, 04 Great Barrier Reef, 05 Whitehaven Beach

Airlie Beach — Heart of the Whitsundays

The Whitsundays comprise of 74 magnificent islands, including 8 with resorts on them and the adjacent coast, centered around the town of Airlie Beach.

Airlie Beach is the gateway to the Whitsunday islands and a colourful, cosmopolitan and inviting holiday town, lying on the shores of a palm fringed beach overlooking the calm Coral Sea and the yachts scattered throughout Pioneer Bay.

This ever expanding town is part of a peninsula that reaches out to the Whitsunday Passage, providing an ideal mainland base for exploring the Great Barrier Reef and the surrounding Whitsunday islands. The main village of Airlie Beach promotes a relaxed tropical ambience and encompasses a landscaped parkland, swimming lagoon allowing for stinger-free swimming all year round and a selection of interesting shops and boutiques.



Whitehaven Beach and Hill Inlet

Getting here

The Whitsundays is located in north-eastern Australia, on Queensland's central coast, approximately 1120km north of Brisbane and 630km south of Cairns.

Getting to the Whitsundays from overseas is best done by flying into Brisbane, Cairns, Sydney or Melbourne, and then booking a domestic flight into one of the Whitsundays' two airports. Brisbane offers the best range of connecting flights into the region.

The two airports that service the Whitsundays daily are:

Great Barrier Reef Airport, Hamilton Island (HTI)

Located on Hamilton Island, the airport is serviced by Virgin Blue, Jetstar and Qantas Link, with daily flights from Cairns, Brisbane, Sydney, Melbourne and connection points beyond. Cruise Whitsundays operate ferries from Hamilton Island to transfer passengers to the Whitsunday Coast and other island resorts.

Whitsunday Coast Airport, Proserpine (PPP)

Whitsunday Coast Airport is located in Proserpine, approximately 25 minutes to Airlie Beach. The airport is serviced by Virgin Blue and Jetstar offering daily flights from Brisbane and connecting flights from other cities.



About Peppers

The Peppers collection is an irresistible, intriguing and indulgent range of escapes selectively located throughout Australia and New Zealand.

With an established 25 year reputation, the strength of the brand elevates the appeal of any investment and with exclusive access to Peppers' systems, procedures and marketing initiatives that are usually outside individual property budgets, the brand's group buying power is better able to maximise opportunities for success.

The Peppers network consists of 28 properties across Australia and New Zealand and has grown from a group of small boutique retreats to now include a range of luxury coastal resorts and stylish metropolitan based apartment hotels with some of the most iconic properties in the Pacific region carrying the Peppers name.



Peppers Coral Coast Resort

Peppers Coral Coast Resort

Magnificently set overlooking the majestic Whitsunday Passage, Peppers Coral Coast Resort Airlie Beach offers luxury full-serviced apartment accommodation like nowhere else on the mainland of the Whitsundays.

Designed by leading architects Gary Hunt & Partners, the resort seamlessly integrates the relaxed tropical maritime splendour of Airlie Beach with the sophistication, style and uncompromising service Peppers is renowned for.

Accommodation includes 102 beautifully appointed one, two and three bedroom apartments with wide breezy verandas maximising the North Queensland tropical lifestyle experience. Peppers Coral Coast Resort offers a multitude of leisure options, including the culinary delights of the exceptional Tides Restaurant & Bar, pure pampering and relaxation at the onsite Endota Spa or simply resting by the stunning wet-edge resort pool.

Only a short walk from the resort is the official gateway to Australia's spectacular Whitsunday islands, Airlie Beach, boasting the timeless charm of a cosmopolitan seaside village. The Whitsundays protected waterways, myriad of islands and Great Barrier Reef are an aquatic playground designed for exploration and it's all at your fingertips.



01 Entrance, 02 Spa, 03 Open Plan 2 Bedroom, 04 Stunning Ocean Views, 05 Horizon Edge Pool



06 Set High On Mt Whitsunday, 07 Luxurious Spa Baths, 08 Tides Restaurant, 09 Contemporary Design, 10 Airlie Beach At Dusk, 11 Spacious Balconies

01



02



03



04



01 Open Air Dining, 02 Contemporary Cuisine, 03 5 Star Dining, 04 Manta Ray Artwork

About Tides Restaurant and Bar

With a chic open-air design and an outlook over the beautiful Coral Sea, Tides Restaurant & Bar affords one of Airlie Beach's most stunning views.

Under the direction of renowned Executive Chef Gregory Devine, you are treated to an indulgent gourmet experience where you will delight in exceptional food and wine.

Devine exudes a passion for fresh Australian produce and showcases the region's best, with vegetables sourced from the local Bowen region, succulent fresh fish and prawns from nearby reefs as well as the freshest Queensland scallops, crabs and bugs.

Tides Restaurant and Bar's cuisine is best described as modern Australian with Asian overtones and Devine's innovative menu has been specially crafted, ensuring each dish complements one another as well as the extensive wine list.

Devine's entree of tempura local reef fish, ponzu dressing and salt and pepper prawns uses simple flavours allowing the seafood to be the real hero of the dish and ensures a true culinary treat.

For the main course lose yourself in a sensory journey with succulent Peking styled duck breast with sweet potato, sundried tomato & goats cheese gnocchi, exotic mushrooms, wilted greens and star anise juice.

Complete your fine dining experience with an indulgent white chocolate panna cotta with caramelised puff sticks and raspberry caramel.



endota
spa



Indulge the senses at Endota Spa

Relax and immerse yourself in the tranquil tropical setting of Peppers Coral Coast Resort with a spa treatment from Endota spa.

The on-site Endota spa offers guests a whole mind, body experience focussed on total wellbeing with anti-stress, anti-ageing, detoxifying and cleansing treatments.

Endota's all-Australian organic body treatments, facials and massages use nurturing Australian organic skincare, to melt away any tension and leave you feeling peaceful and pampered.

Indulge in signature treatments including 'Endota rapt' where guests are treated to full body exfoliation before being wrapped in a West Australian cocoon.



01 Snorkelling The Reef, 02 Golf On Dent Island, 03 Main Street Airlie Beach, 04 Heart Reef, 05 Hamilton Island Race Week

1 Bedroom Apartment



01 Seamless Open Plan With Triple Stack Doors, 02 Wide Spacious Balconies, 03 Modern Functional Kitchens, 04 Master Bedroom

Floorplan — Type 1A

1 Bedroom Apartment
Internal Area — 63.34m²
Balcony Area — 15.51m²

Available in buildings:
Armit & Dungarra



Floorplan — Type 1B

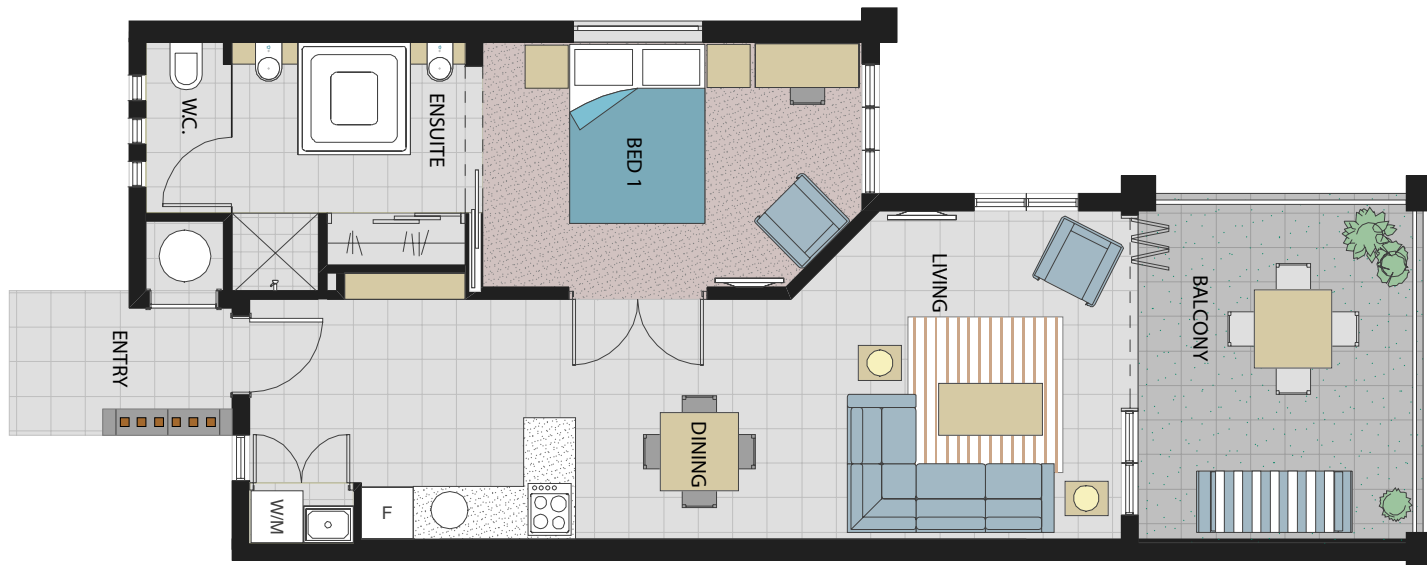
1 Bedroom Apartment

Internal Area — 61.21m²

Balcony Area — 13.62m²

Available in buildings:

Cowie, Henning, Fitzalan & Eshelby



Floorplan — Type 1C

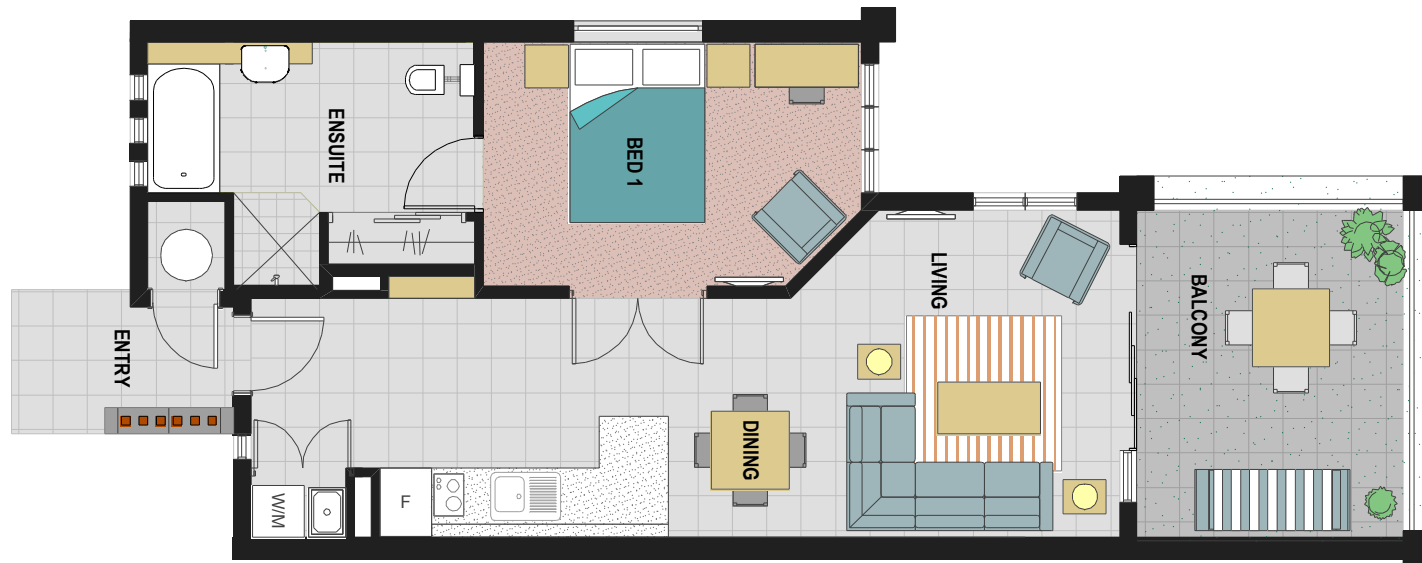
1 Bedroom Apartment

Internal Area — 60m²

Balcony Area — 14m²

Available in buildings:

Fitzalan



2 Bedroom Apartment



01 Triple Stack Bifolds, 02 Ocean Views From Bedrooms, 03 Large Modern Kitchens, 04 Stunning Ocean Views

Floorplan — Type 2A

2 Bedroom Apartment
Internal Area — 95.96m²
Balcony Area — 25m²

Available in buildings:
Armit & Eshelby



Floorplan — Type 2B

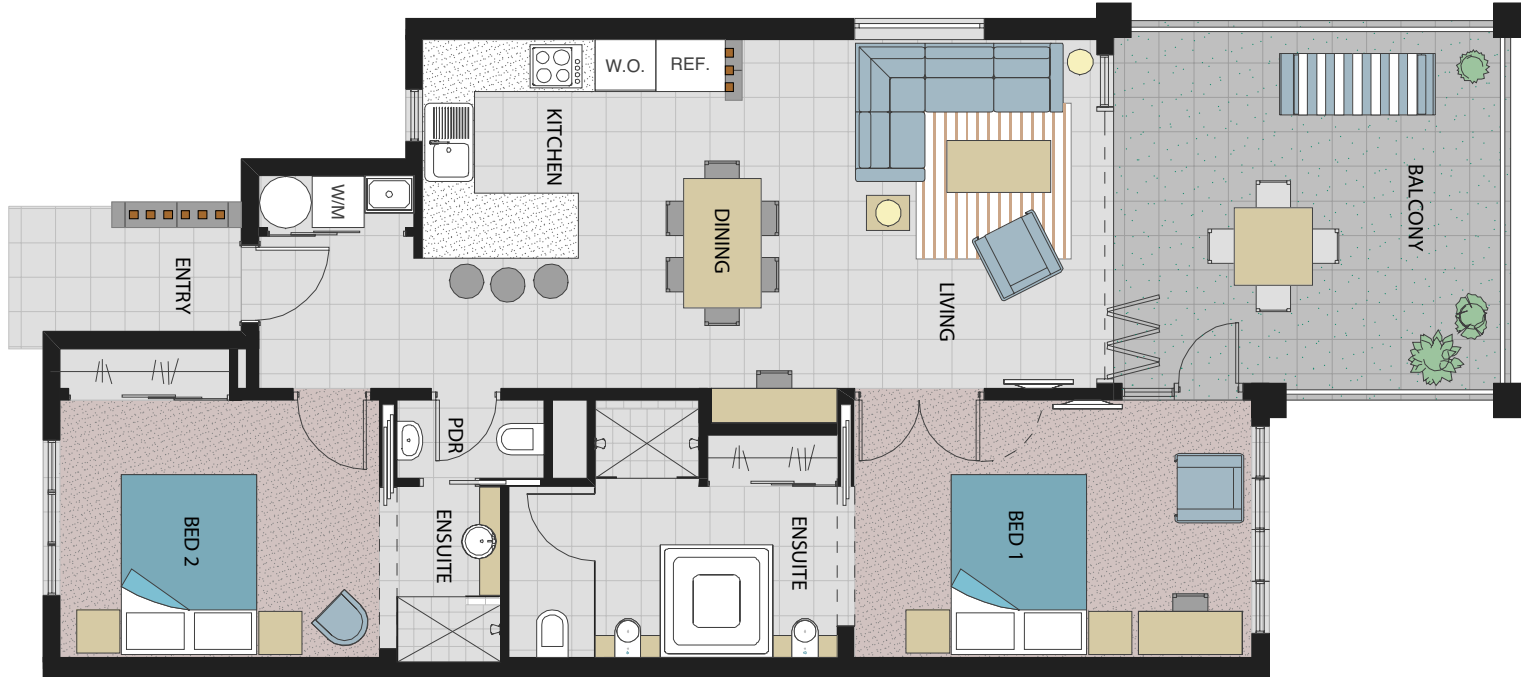
2 Bedroom Apartment

Internal Area — 86.80m²

Balcony Area — 19.88m²

Available in buildings:

Armit & Dungarra



Floorplan — Type 2C

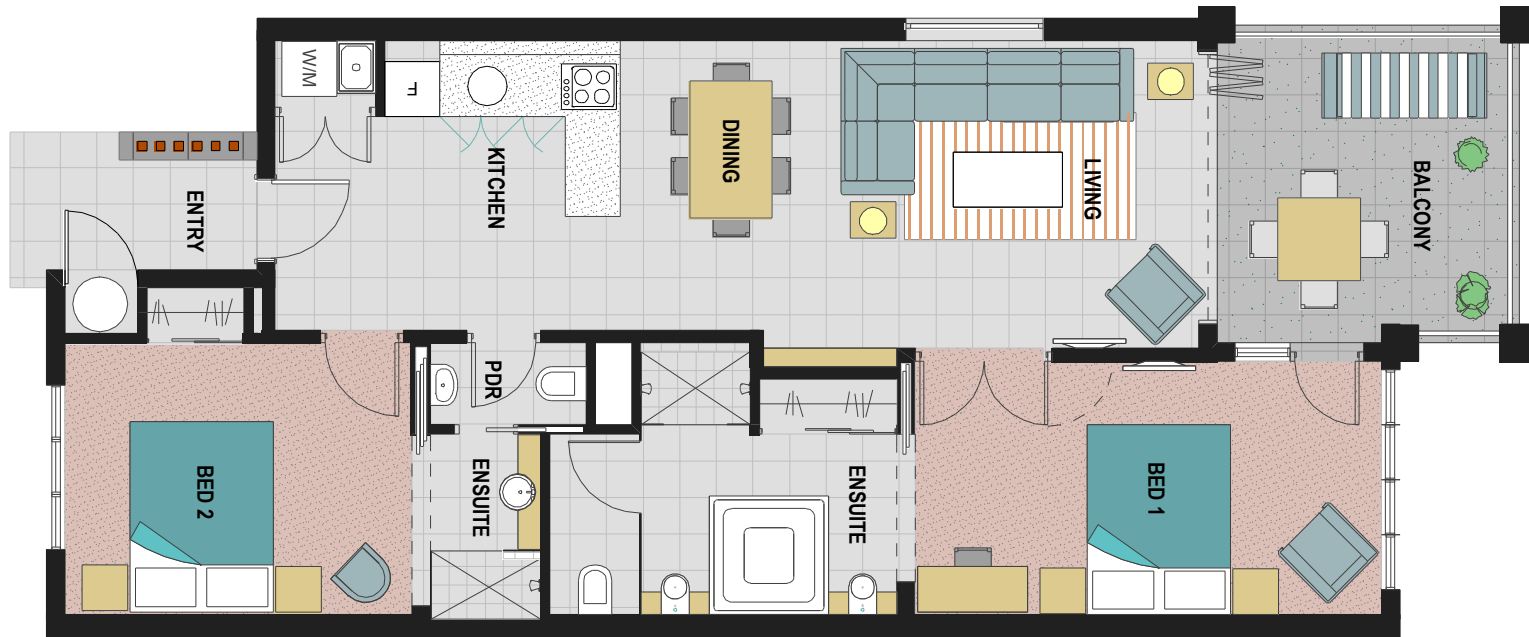
2 Bedroom Apartment

Internal Area — 83.68m²

Balcony Area — 11.30m²

Available in buildings:

Eshelby



3 Bedroom Apartment

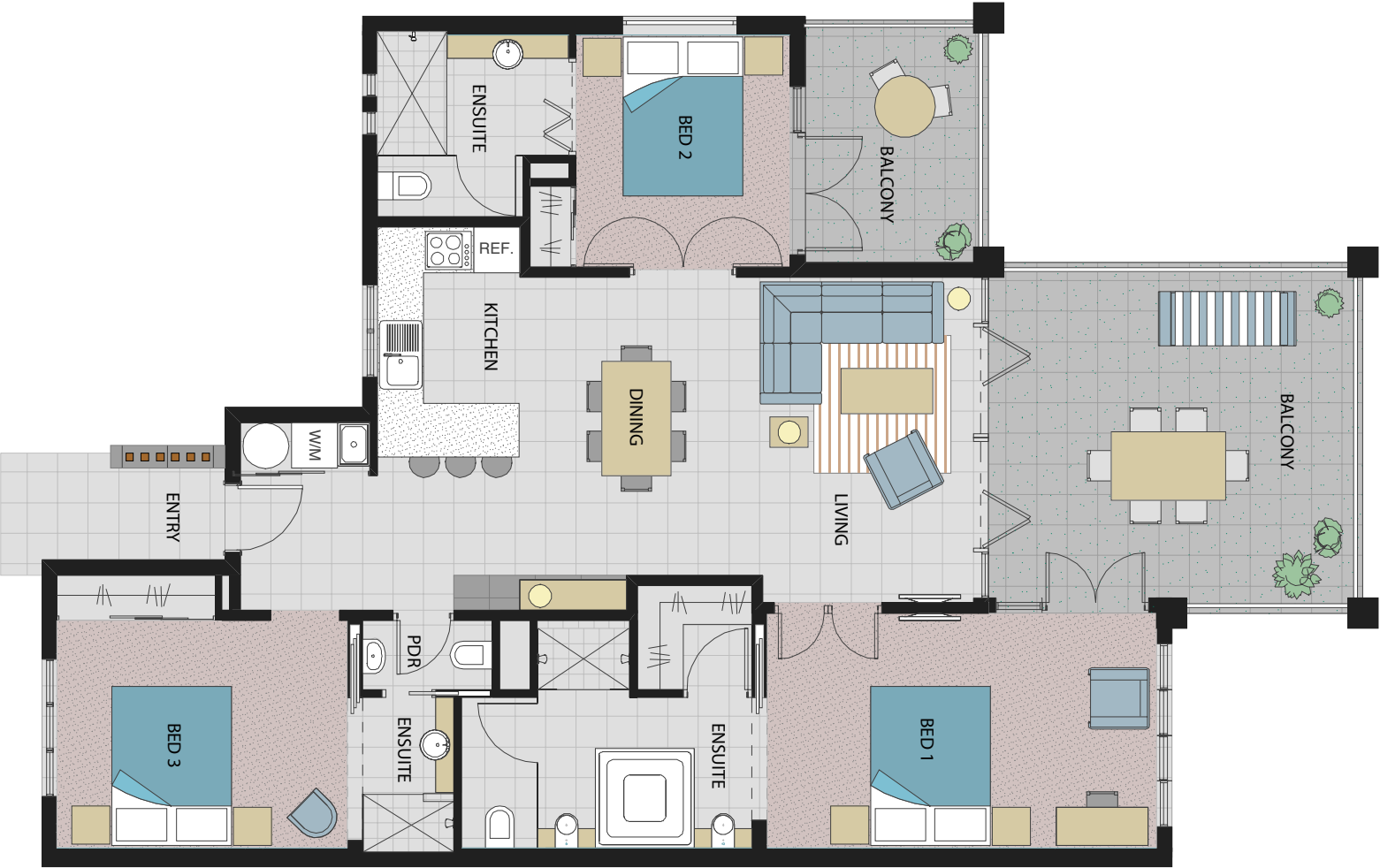


01 Seamless Outdoor Living Areas, 02 Large Modern Bathrooms, 03 Contemporary Soft Furnishings, 04 Spacious Balconies,

Floorplan — Type 3A

3 Bedroom Apartment
Internal Area — 110.08m²
Balcony Area — 29.70m²

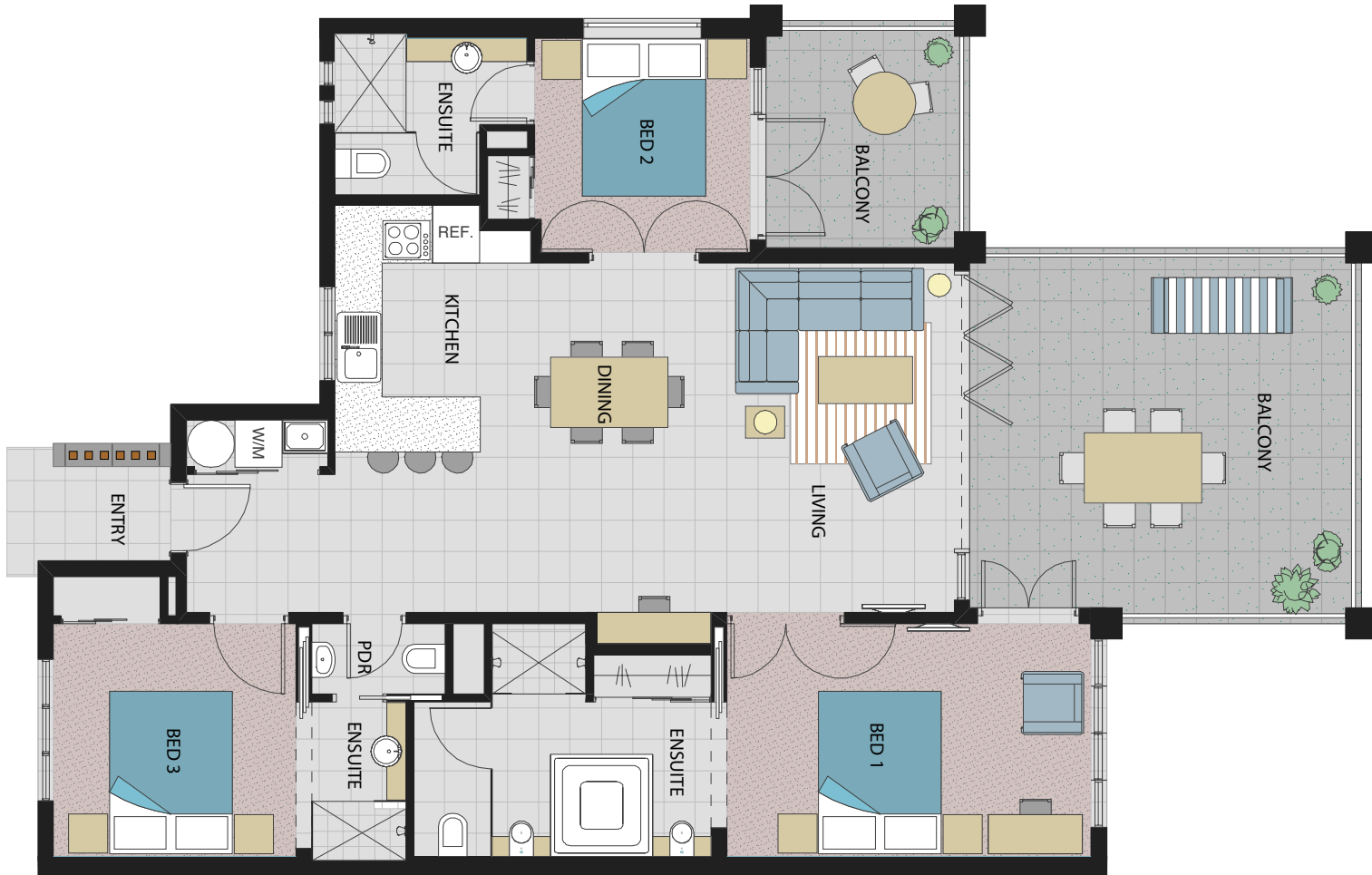
Available in buildings:
Cowie



Floorplan — Type 3B

3 Bedroom Apartment
Internal Area — 105.14m²
Balcony Area — 31.19m²

Available in buildings:
Gumbrell



Standard Units Internal Finishes

Entry

Front Door	Solid Core Door - Painted Finish 'Spanish White'
Floors	Ceramic Tiles - Glazed 'Loft Blue/Grey'
Floor Feature	Blue Stone
Walls	Plasterboard Painted '1/4 Parchment'
Ceilings	Painted Finish. 'Parchment'

Generally

Tap ware	Chrome finish flickmixer tapware throughout (Grohe or similar)
Air conditioning	Split system, air conditioning
Ceiling	Painted Finish 'Parchment'
Doors	Plasterboard Painted '1/4 Parchment'
Ceilings	Painted Finish. 'Parchment'
Doors	Painted Finish '1/4 Parchment'
Ceiling trims	Painted Timber Beading
Fixed & operable louvres to balcony bifold doors and windows	Glazing - Comfort Tone Green, Timber - Western Red Cedar, frames- clear anodised

Kitchen

Bench Tops	Granite - 'Kashmir'
Joinery	2 pac polyurethane 'Warrior'on timber frame with metal mesh infill
Splashback/Hob	Granite - 'Kashmir'
Kitchen Sink	1½bowl, stainless steel
Appliances	Stainless steel appliances and below bench oven (Bosch)
Dishwasher	Stainless Steel front (Bosch)
Cooktop	Ceramic Electric Cooktop (Bosch)
Floors	Ceramic Glazed Tiles 'Loft Blue/Grey'
Ceilings	Painted Finish 'Parchment'

Living/Dining

Internal Walls	Plasterboard walls
Ceiling	Painted 'Parchment'
Floors	Ceramic tiles - glazed 'Loft Blue/Grey'
Ceiling Fan	

Bedrooms

Walls	Painted Plasterboard '1/4 Parchment'
Walls - Feature	Ship Lap weather board Painted 'Bel Air'
Ceiling	Painted '1/4 Parchment'
Floors	Ultratwist Carpet (100% Nylon 'Smoke Screen')
Wardrobes	Built-in wardrobe with vinyl coated sliding doors clear anodised frame.
Fixed & operable louvres to balcony bifold doors and windows	Glazing - Comfort Tone Green, Timber - Western Red Cedar, frames- clear anodised
Ceiling Fan	

**Standard Units
Internal Finishes (Continued)**

Bathroom / Ensuites

Spa Bath	Acrylic spa bath (main bathroom only)
Shower Recess	To main bathroom - Ceramic Glazed tiles 'Loft Blue/Grey'
Shower Screens	Clear Anodised Frame - Glass panels
Vanity Bench Top	Bamboo Board, 2 pac polyurethane
Basin	Vanity basin - Vitreous China (white)
Floors	Ceramic Glazed tiles 'Loft Blue/Grey'
Walls	Paint finish above tiling. Part height ceramic tiling generally. Full height tiling to shower recesses. Tiles 'White'.
Feature Ship Lap Wall	Painted Bel Air
Ceilings	Weatherboard with Painted Finish '1/4 Parchment'
Doors	Painted Finish '1/4 Parchment'
Mirrors	Frameless circular mirror
Splashback	Ceramic Tiles 'White'

Laundry Niche

Joinery	Laminated
Splash back	Ceramic tile
Laundry Sink	Stainless steel & White Cabinet
Appliances	Clothes dryer and washing machine with stainless steel drum
Floor	Ceramic Tiles

Light Fittings

Low voltage downlights, oyster ceiling bulkhead lights
Wall mounted pendant lights
Dome pendant over breakfast bar
All lights as specified in Architectural plans

**Standard Units
External Finishes**

Balcony

Ceiling fan	
Floors	Quarry tile (non-slip)
Handrails	High quality anodized aluminium handrail with powder coated balustrade 'Metalic Charcoal' or horizontal wire rope on the lower level
Sun Protection	Provided by balcony slab
Walls (1)	Ship Lap Weatherboard 'Double Spanish White'
Walls (2)	Painted Render 'Double Grey Olive'
Roof	Colour Bond Ultra 'Deep Ocean'

Experience Peppers

Mt Whitsunday Drive, Airlie Beach, Qld. 4802

Call Steve Marks on 0423790850
or email steve.marks@raywhite.com

Images courtesy of Whitsunday Photographer

whitsunday
photographer
natina jones + steve marks

Ray White