

RayWhite

Ray White Takanini | Ray White Karaka

School Holiday Fun!

Fun activities to keep little hands busy
these school holidays





photo & recipe source: <https://www.twosisterscrafting.com/fall-leaves-rice-krispie-treats/>

Autumn Leaves Treats

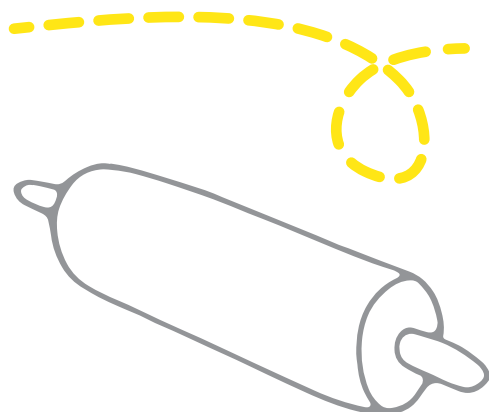
These beautiful Autumn leaves Rice Krispie treats are delicious and easy to make!

INGREDIENTS

12 cups Rice Krispies cereal
12 cups mini marshmallows
12 tablespoons salted butter
Food coloring
Leaf cookie cutter

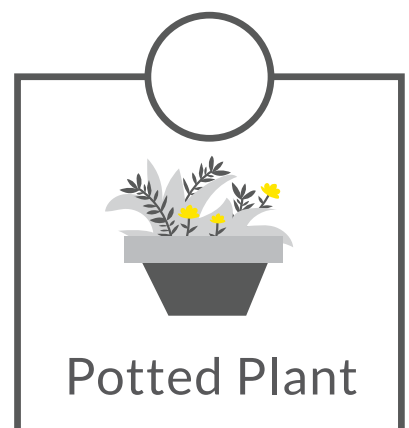
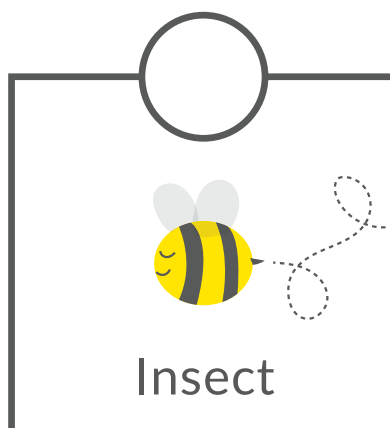
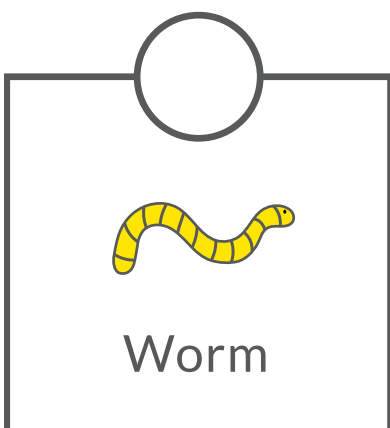
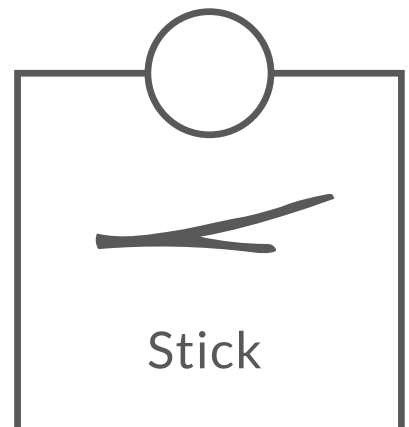
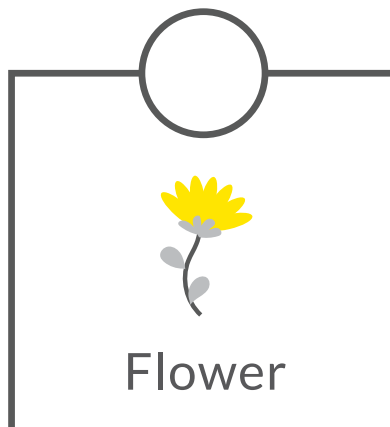
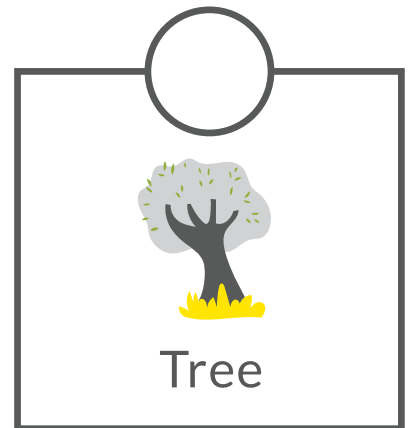
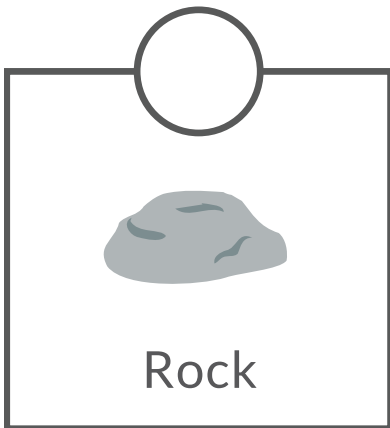
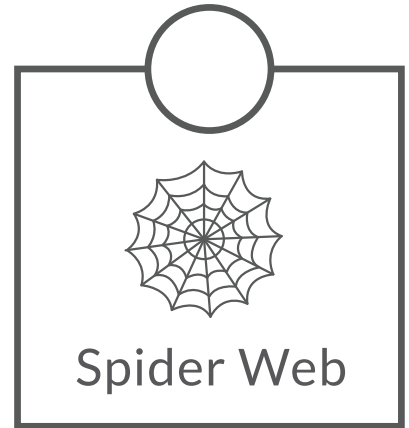
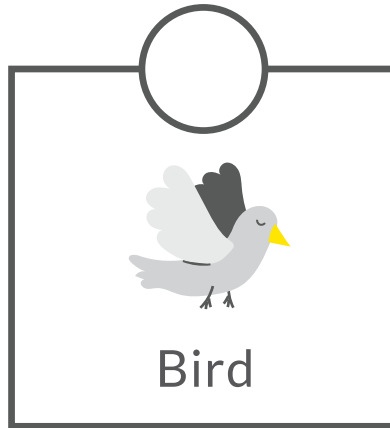
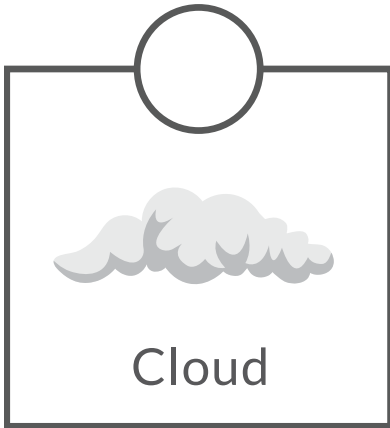
METHOD

1. Melt 8 tablespoons of butter in a large saucepan, slowly on medium-low heat.
2. Add 8 cups of Mini Marshmallows to the melted butter.
3. Stir the marshmallows on medium-low heat. As soon as the marshmallows are melted, take the pan off the heat.
4. For each leaf color you should melt 3 tablespoons of butter in a medium pan on medium heat. Add 3 cups of Mini Marshmallows and stir them until they are melted. Gently fold the marshmallow mixture and Rice Krispies until all of the cereal is completely covered with the melted butter and marshmallow mixture.
5. Add the food coloring, we used 4 different colours .
6. Add 8 cups of Rice Krispie Cereal to the marshmallow mixture.
7. Allow the Rice Krispie Treat mixture to cool enough so you can handle it but that it is still malleable.
8. Start filling the leaf cookie cutter to form the maple leaf treats. Press the Rice Krispie Treat out the back of the cookie cutter and make another one
9. Working quickly, keep folding the mixture until every piece of cereal is covered in the marshmallow mixture.
10. Don't press the mixture down too compactly, just smooth the top with a spatula or butter your fingers and pat down the top.
11. Let the Rice Krispie Treats cool and enjoy!

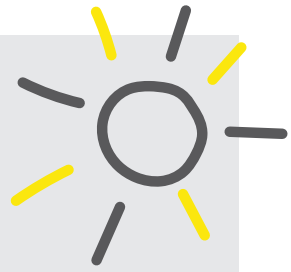


Backyard Treasure Hunt

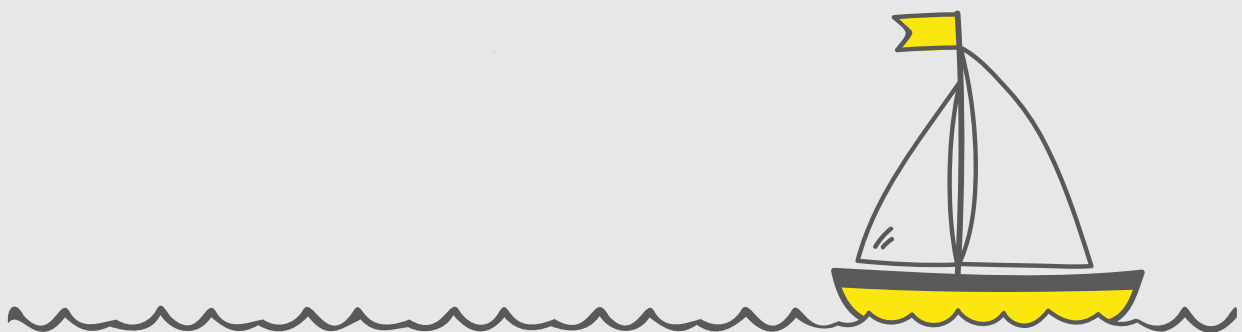
Grab a pen and count how many items you can find in your garden



Colouring-In



Let's add some colour to this cute deer surrounded by falling leaves.



Cross Word Puzzle

Autumn Words! Write the item's name in the blocks provided.



Across

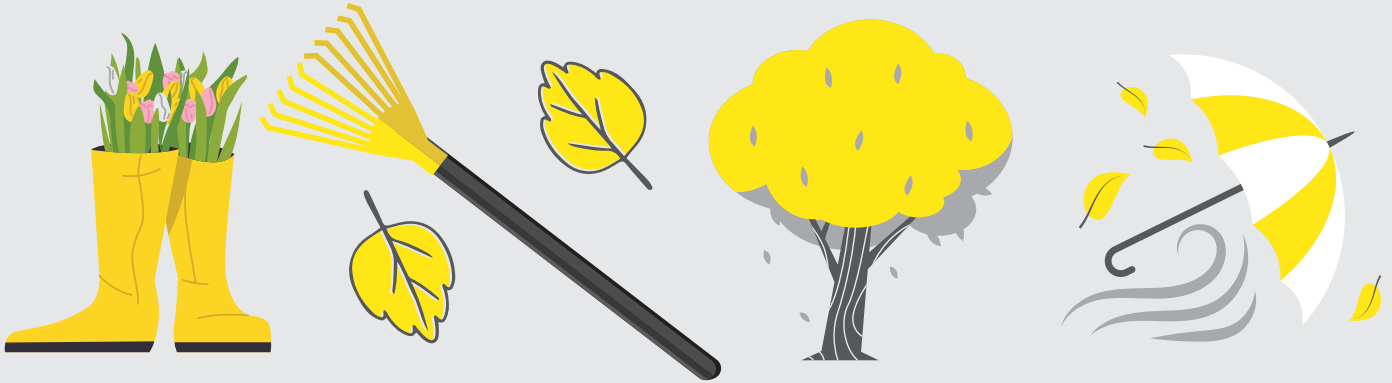
3. A small nut that falls from oak trees and is food for animals like squirrels.
6. A small, furry animal with a bushy tail that loves to climb trees and eat nuts.
7. A big orange vegetable that's often used for carving and making pies during fall.

Down

1. Drops of water that fall from the clouds in the sky when the weather gets wet.
2. A piece of clothing that you wear to stay warm, especially in chilly weather.
4. A brown nut that grows inside a prickly shell and can be roasted and eaten.
5. The flat, colorful part of a tree that grows on branches and falls off in the fall.

Word Search

Find all the words to complete the word search.
Words can be found in any direction.



WINDY	TREE	KITE	RAKE	JUMPER	RAIN
LEAVES	AUTUMN	GUMBOOTS	UMBRELLA	HIKING	APRIL

G A L L E R B M U F D W
H X Q A C R E P M U J G
Z T C B H I R Y D N I W
G U M B O O T S U L T R
N K A R R A K E K E R A
K L N P C D W D R A E I
R O M D R G M Z G V E N
E L U H Z I N X K E O Q
T K T Q W Q L I R S I L
I Q U V M C H Z K J F C
K A A B B N R C N I O V
I A O B U C P W Q L H L

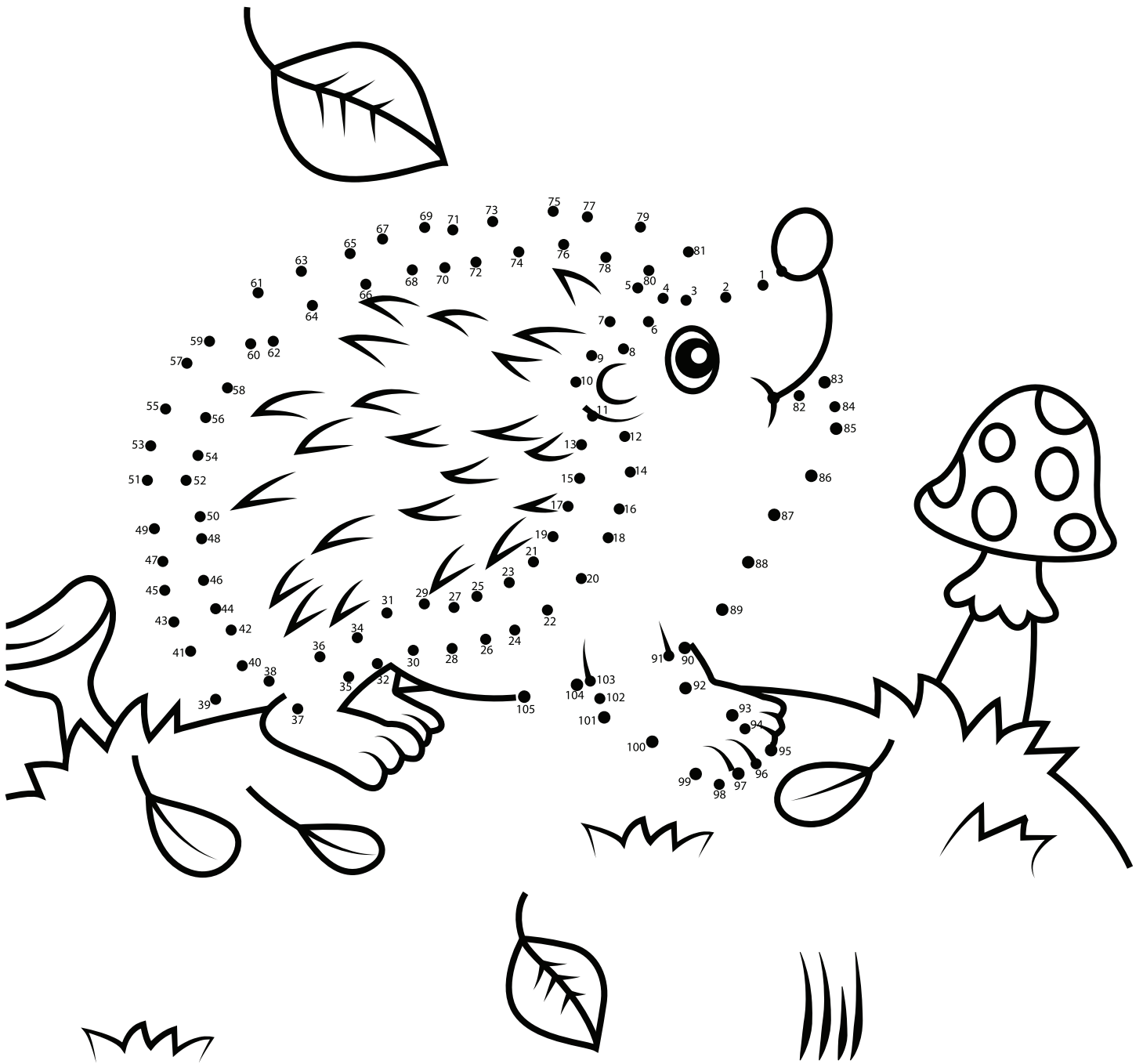
Spot the Difference

Can you find 10 differences between these two squirrel scenes?



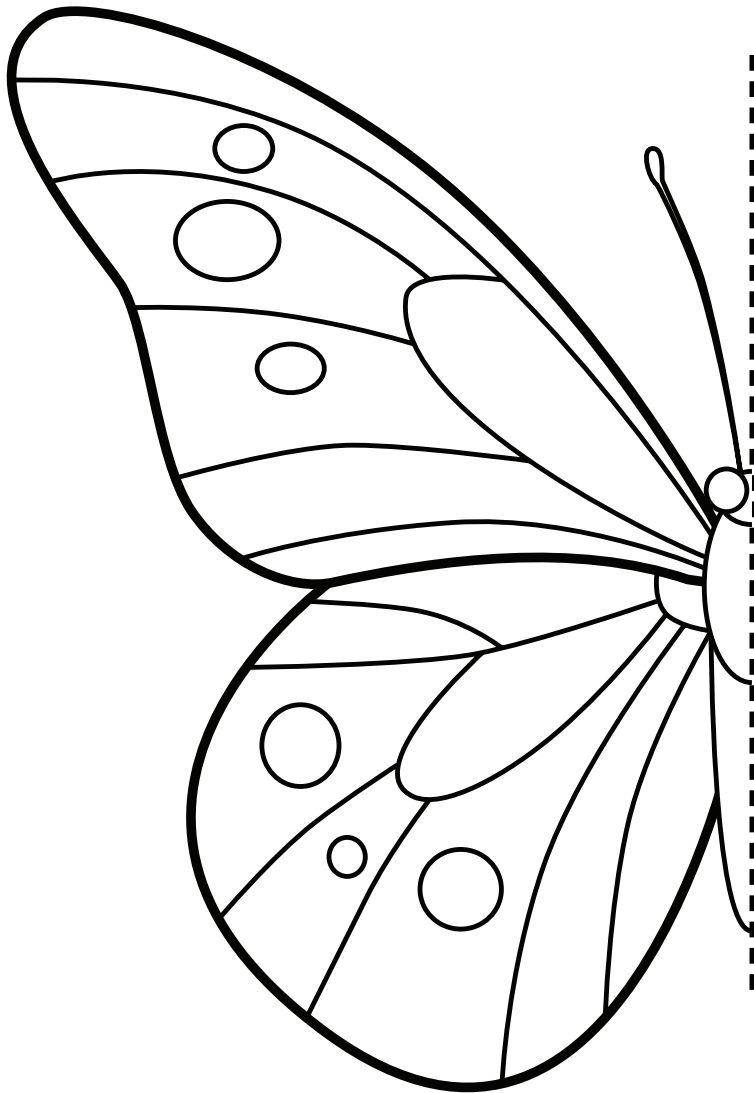
Connect the Dots

Draw a line from dot number 1 to dot number 2, then from dot number 2 to dot number 3 etc. Continue to join the dots until you have connected them all.



Symmetrical Drawing

Fold along the dotted lines. Then place the paper on a window so the light shows through. Next trace the other side.



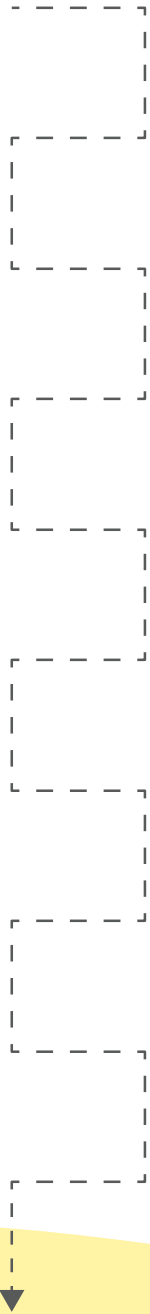
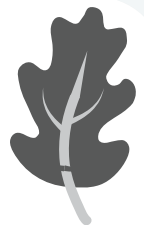
Maze Game

Can you help the little bee find her way to the correct flower?



Tracing Practice

Trace the path of each leaf.



The RayWhite logo consists of a solid yellow square with the brand name "RayWhite" written in a bold, black, sans-serif font at the bottom.

CITY SOUTH GROUP

TAKANINI

rwtakanini.co.nz

09-299 1999

KARAKA

rwkarakako.nz

09-269 0668

CSI PROPERTY MANAGEMENT LTD

csirentals.co.nz

0800 274 736