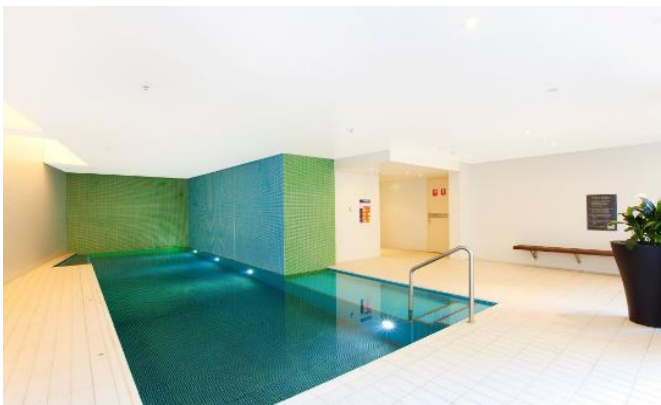


The Bond • 38 Hickson Road



The Bond is a small boutique development of 49 apartments in this 12 storey residential complex with 1 commercial space on the ground floor. It is located in one of Sydney's most dynamically changing precincts being situated just across the road to the forthcoming Barangaroo site at Darling Harbour www.barangaroo.com.

Being one of the largest re-developments in Sydney's history this will change the public perception in the way that people view Sydney. My view is that over time the orientation of Sydney will change away from Circular Quay in the north with the focus turning east.

The Lend Lease Global Head Office situated next door at 30 Hickson Road and the development was completed by Bovis Lend Lease in 2004. The Bond offers a range of apartments sizes, it has two entrances one on Hickson Road and the other on Jenkins Street that offers easy access into the city via Kent Street.

Configurations;

- 12 Levels • 49 Residential Apartments
- 6 Studio Apartments
- 10 One Bedroom Apartments
- 23 Two Bedroom Apartments
- 9 Three Bedroom Apartments
- 1 Four Bedroom Penthouse

Facilities:

- Part time Concierge / Building Manager
- Indoor heated lap pool
- Gymnasium